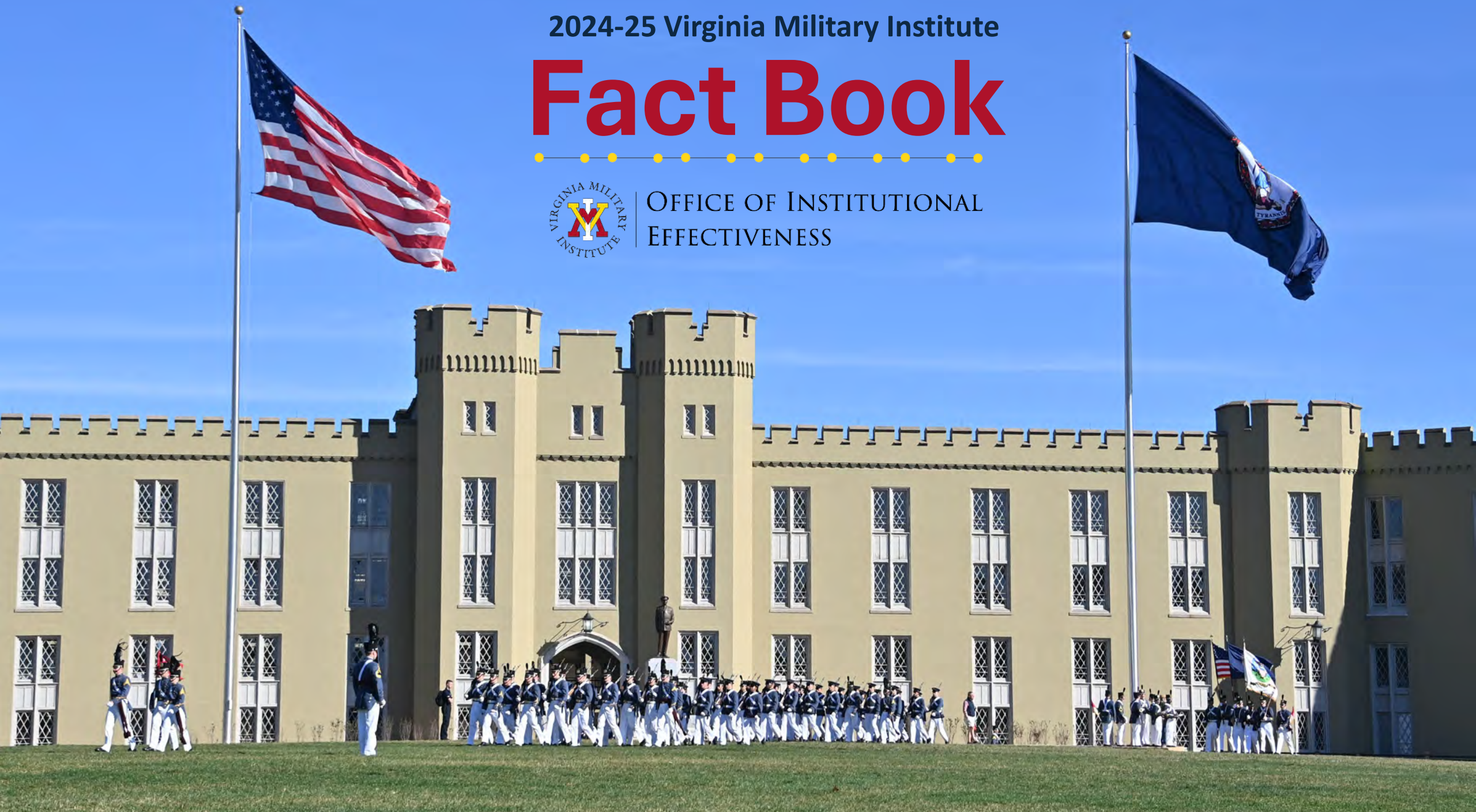


2024-25 Virginia Military Institute

Fact Book



OFFICE OF INSTITUTIONAL
EFFECTIVENESS



Preface

The Virginia Military Institute's Fact Book is compiled by the Office of Institutional Effectiveness (OIE). The Fact Book continues to provide reliable statistical data and summary information designed to answer the most frequently asked questions about VMI. The Fact Book is based on sound institutional research and serves as a good first point of reference for institutional assessment, self-study, and planning. In total, this fact book provides the institutional profile as of Fall 2024 for a limited number of frequently requested data points. OIE would like to sincerely thank everyone who provided data, information, and suggestions that contributed to the improvement and integrity of the Fact Book. This publication is reflective of the collaborative nature of our Post community and its dedication to engagement.

Col. Andrew L. Luna, Director of OIE

Lt. Col. Dan Marshall, Associate Director, Institutional Effectiveness

Ms. Di Han, Associate Director, Institutional Research

Maj. Andee Oberosler, Research Analyst

Ms. Donna Young, Office Manager



Table of Contents

Mission and Vision.....p. 4	Commissioning.....p. 66
Accreditations.....p. 5	Majors, Minors, and Concentrations... .p. 69
Administration.....p. 6	Academic Honors.....p. 74
Rankings.....p. 17	Study Abroad.....p. 76
Admissions.....p. 20	Undergraduate Research.....p. 78
Enrollment.....p. 28	Tuition and Fees.....p. 80
Retention Rates.....p. 39	Financial Aid.....p. 84
Graduation Rates.....p. 47	Financials.....p. 87
Underrepresented Cadets/Pell Recipients.....p. 54	VMI Employees.....p. 94
Athletics.....p. 58	Endowment.....p. 100



Mission and Vision

Mission

Virginia Military Institute believes that the measure of a college lies in the quality and performance of its graduates and their contributions to society.

Therefore, it is the mission of Virginia Military Institute to produce educated, honorable men and women, prepared for the varied work of civil life, imbued with love of learning, confident in the functions and attitudes of leadership, possessing a high sense of public service, advocates of the American Democracy and free enterprise system, and ready as citizen-soldiers to defend their country in time of national peril.

To accomplish this result, Virginia Military Institute shall provide to qualified young men and women undergraduate education of highest quality — embracing engineering, science, and the arts — conducted in, and facilitated by, the unique VMI system of military discipline.

Vision

To be the premier small college in the nation, unequaled in producing educated and honorable citizen-leaders, with an international reputation for academic excellence supported by a unique commitment to character development, self-discipline and physical challenge, conducted in a military environment.



Accreditation

VMI Entity	Accrediting Agency	Initial Accreditation	Date of Reaffirmation	Date of Next Reaffirmation
Virginia Military Institute	SACSCOC*	1926	2017	2027
Civil Engineering Major	ABET	1936	2024	2030
Economics & Business Major	AACSB	2009	2022	2030
Electrical Engineering Major	ABET	1936	2024	2030
Mechanical Engineering Major	ABET	1987	2024	2030
Chemistry Major	ACS**	1948	2024	2029

<https://www.vmi.edu/about/offices-a-z/institutional-effectiveness/accreditation/>

Note:

*Virginia Military Institute (VMI) is accredited by the Southern Association of Colleges and Schools Commission on Colleges (SACSCOC) to award baccalaureate degrees. VMI also may offer credentials such as certificates and diplomas at approved degree levels. Questions about the accreditation of VMI may be directed in writing to the Southern Association of Colleges and Schools Commission on Colleges at 1866 Southern Lane, Decatur, GA 30033-4097, by calling (404) 679-4500, or by using information available on SACSCOC's website (www.sacscoc.org).

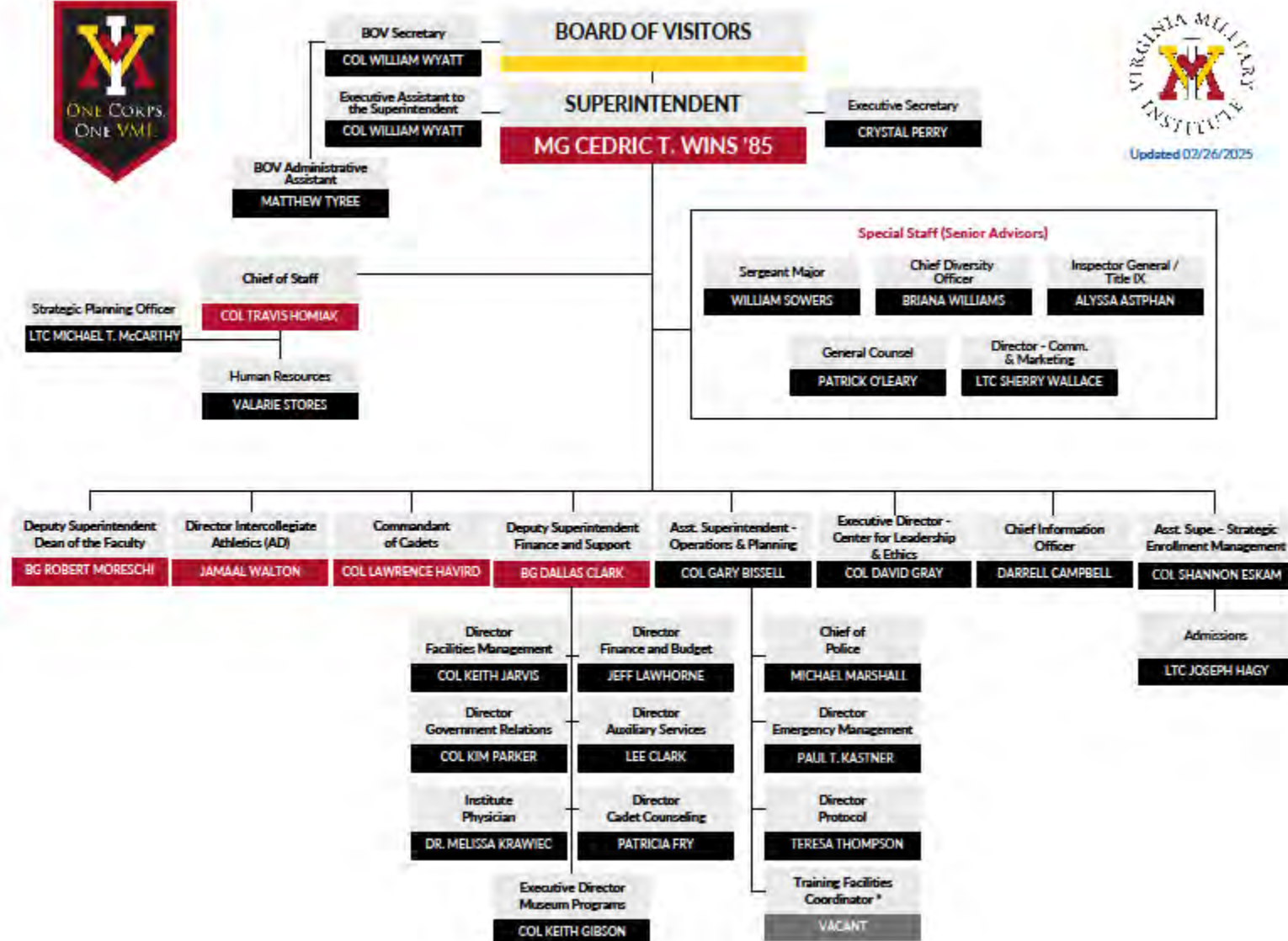
**The American Chemistry Society (ACS) uses the language approval of programs and curriculum to represent an approved program based on their standards over the phrase accreditation.





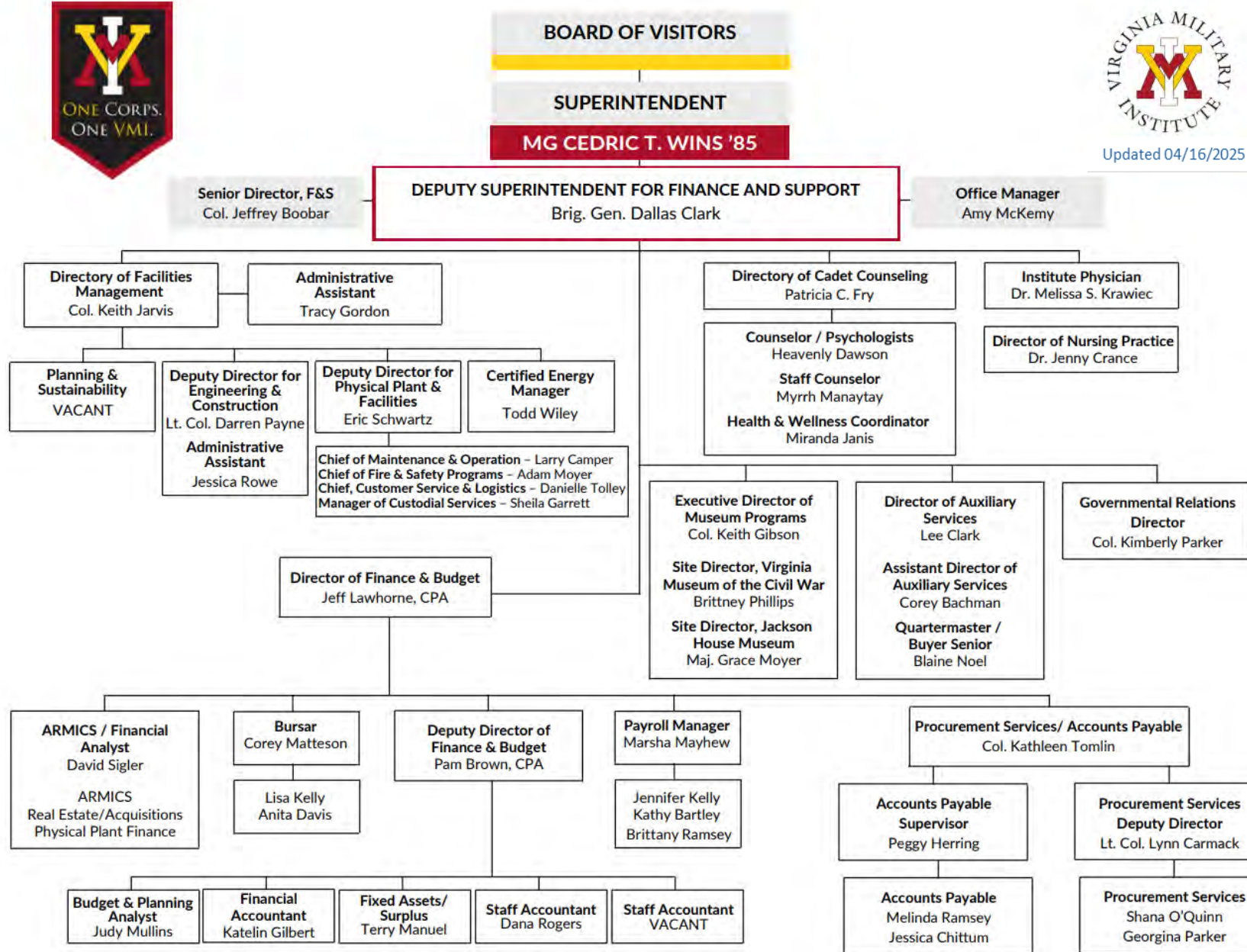
ADMINISTRATION





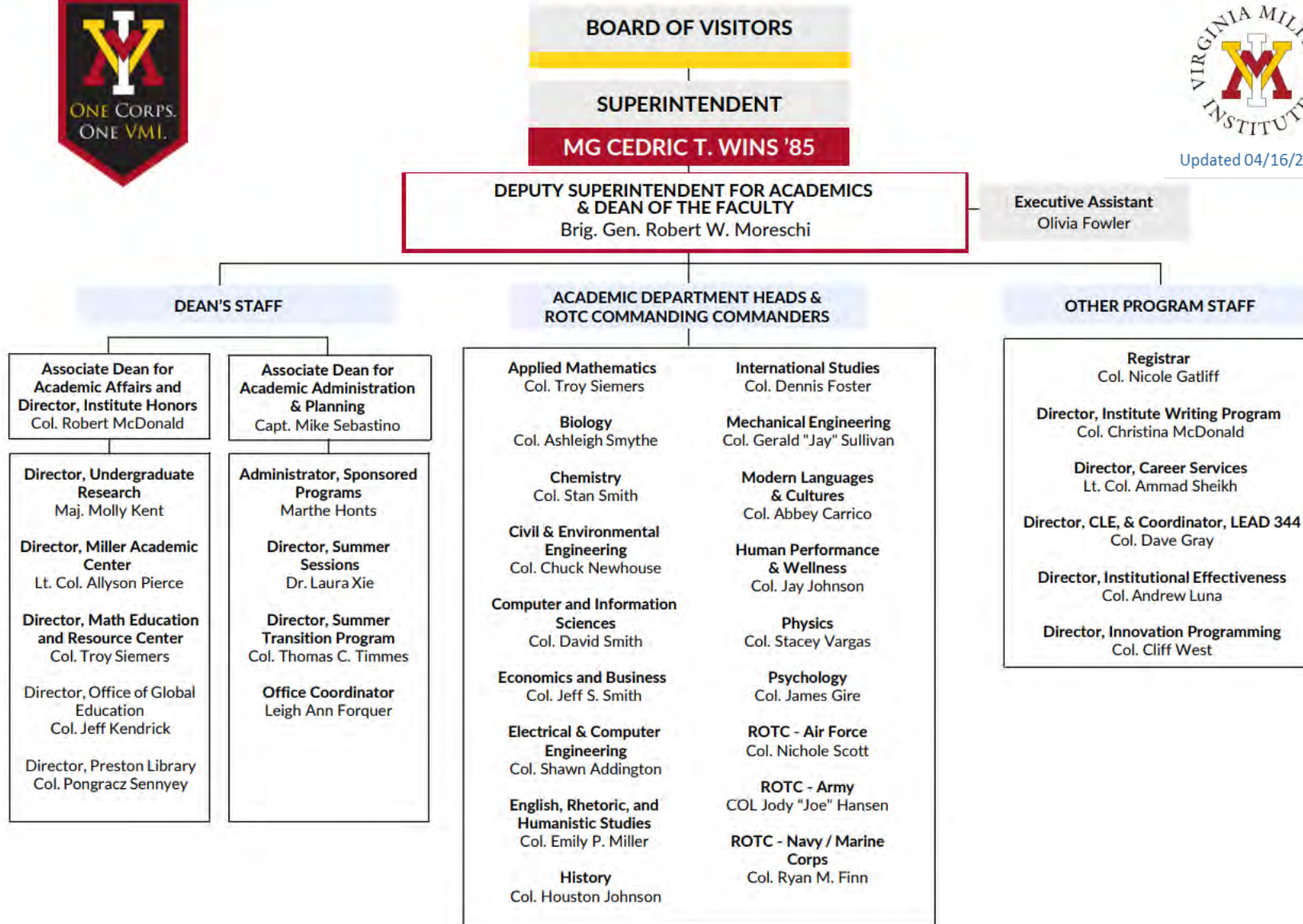


Updated 04/16/2025





Updated 04/16/2025





BOARD OF VISITORS

SUPERINTENDENT

MG CEDRIC T. WINS '85

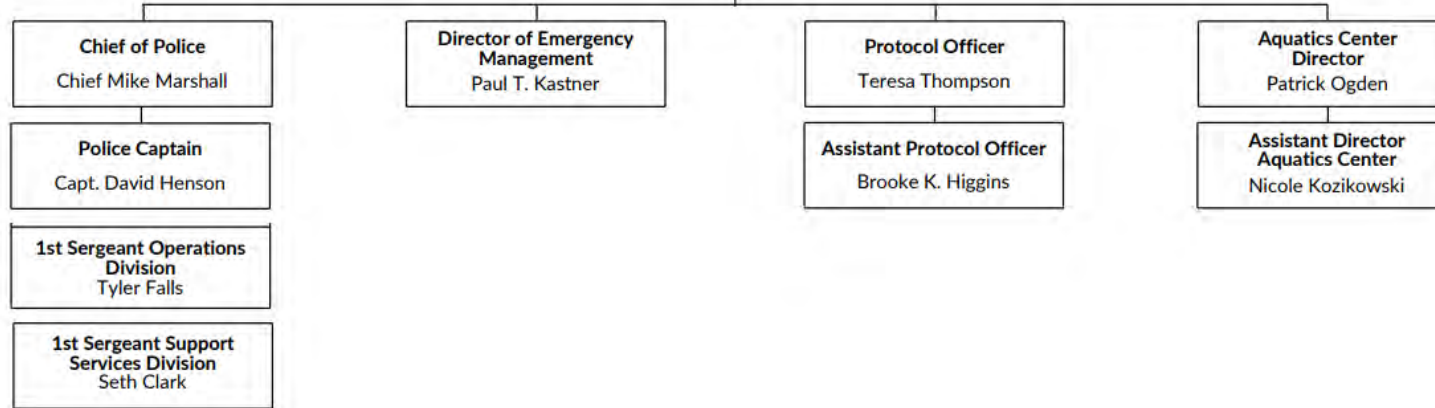


Updated 04/16/2025

Executive Administrative
Assistant II
Katrina Butner

ASSISTANT SUPERINTENDENT - OPERATIONS & PLANNING
Col. Gary Bissell

Assistant Operations &
Planning Officer
Lt. Col. Collin Bissell





BOARD OF VISITORS

SUPERINTENDENT

MG CEDRIC T. WINS '85

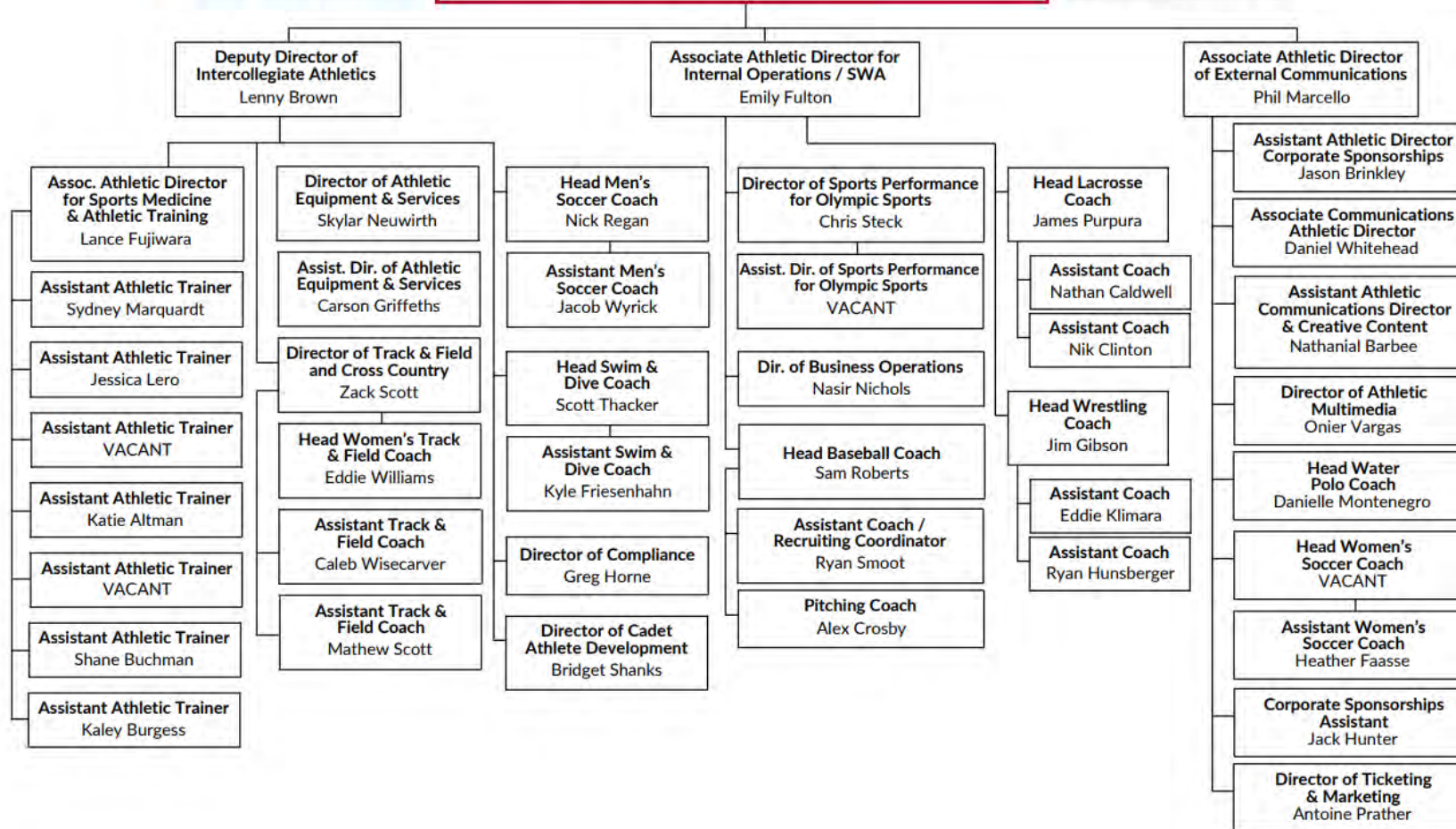


Updated 04/16/2025

Faculty Athletic Representative
Col. Jay Johnson

DIRECTOR, INTERCOLLEGIATE ATHLETICS
Jamaal Walton

Executive Assistant for Intercollegiate Athletics
Ms. Michelle Murphy





BOARD OF VISITORS

SUPERINTENDENT

MG CEDRIC T. WINS '85

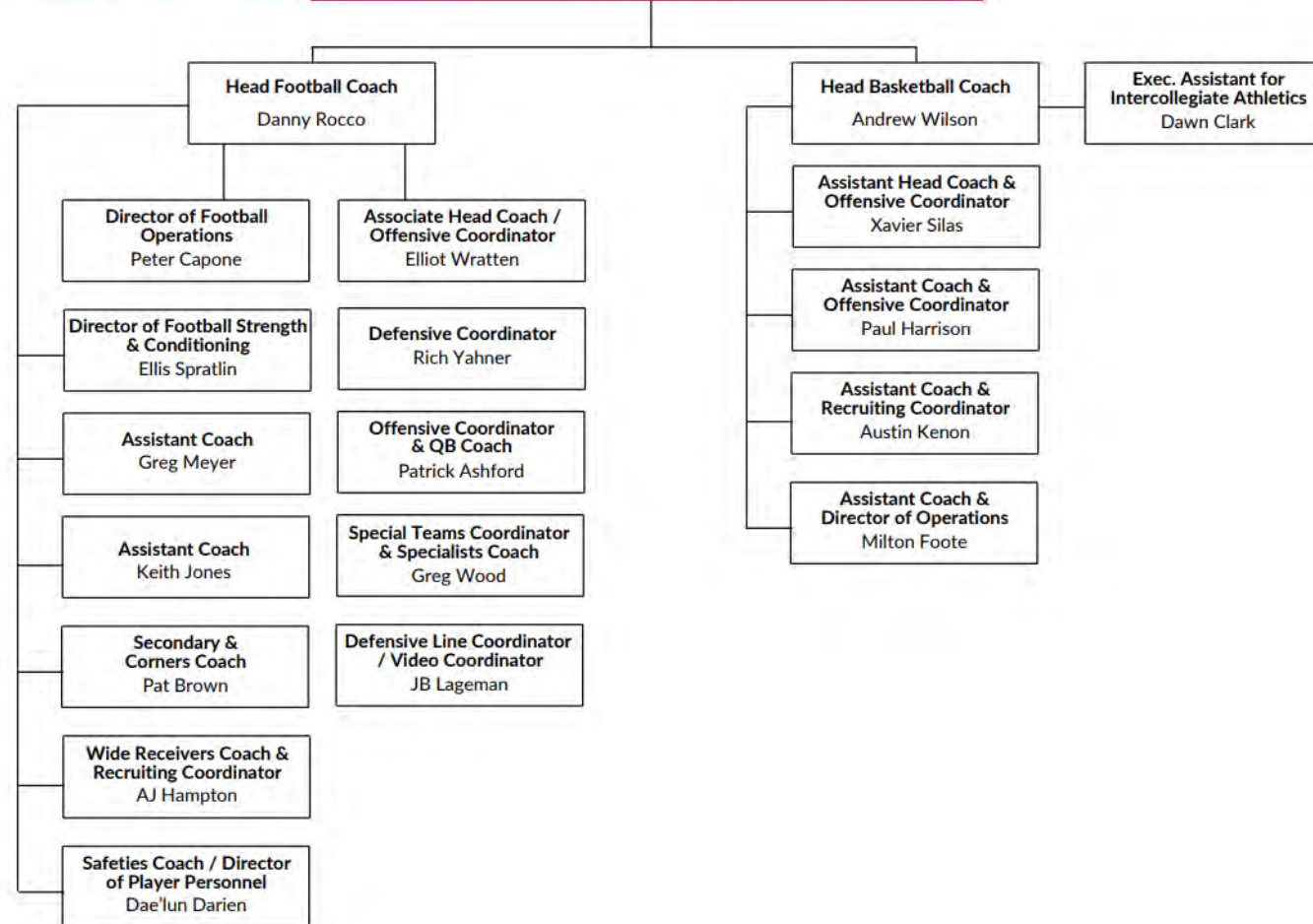


Updated 04/16/2025

Faculty Athletic
Representative
Col. Jay Johnson

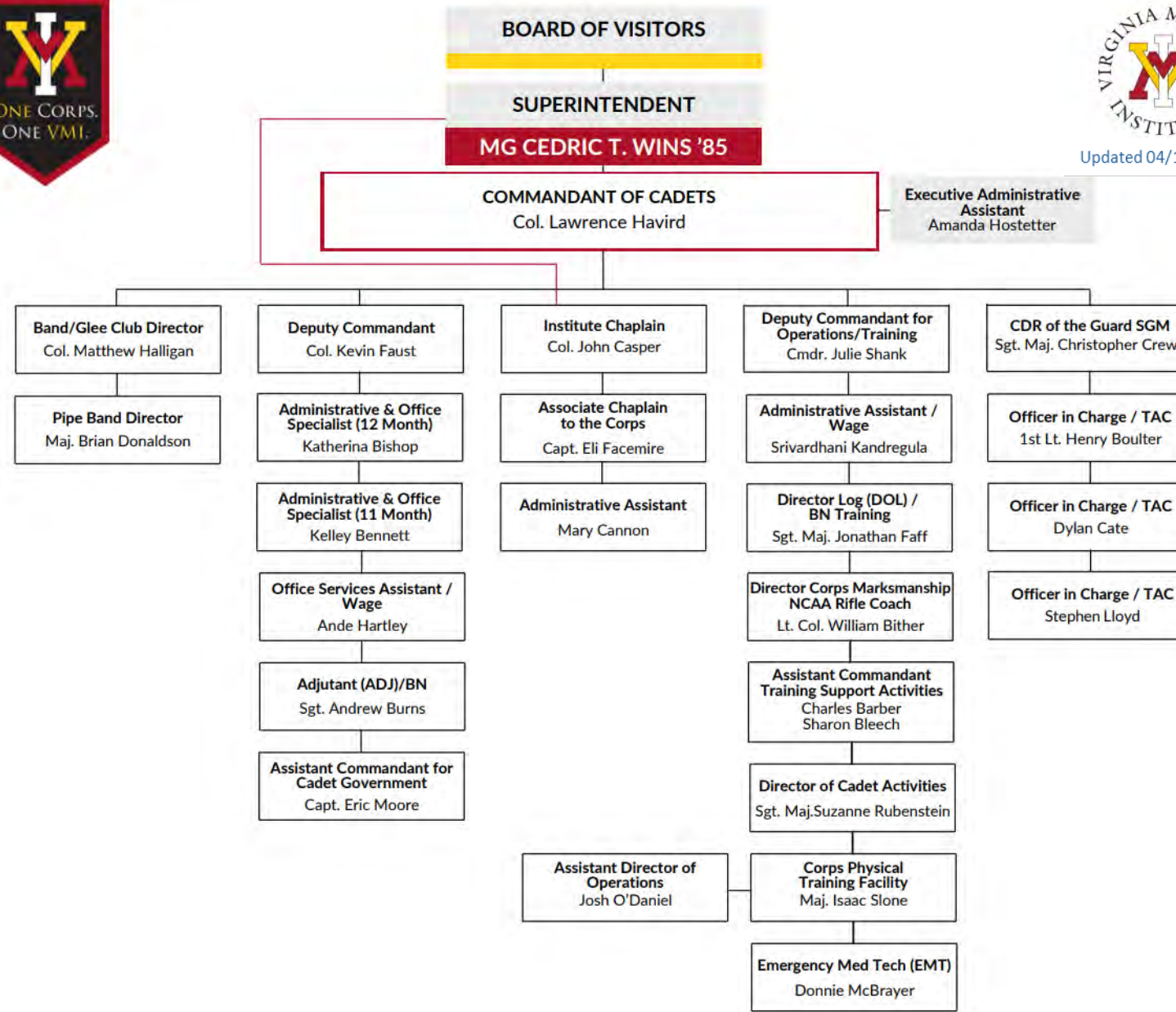
DIRECTOR, INTERCOLLEGIATE ATHLETICS
Jamaal Walton

Executive Assistant for
Intercollegiate Athletics
Ms. Michelle Murphy





Updated 04/16/2025





BOARD OF VISITORS

SUPERINTENDENT

MG CEDRIC T. WINS '85

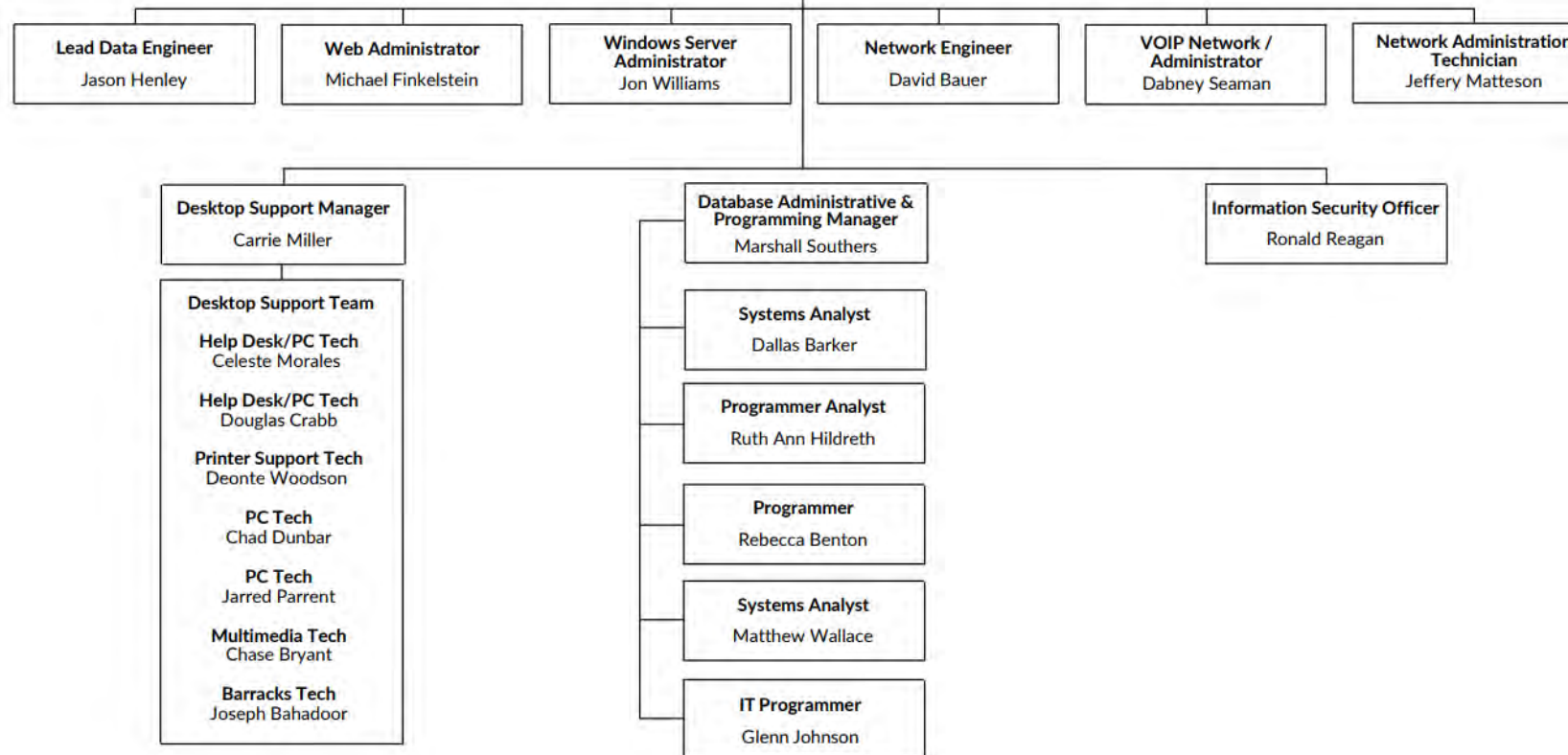


Updated 04/16/2025

CHIEF INFORMATION OFFICER

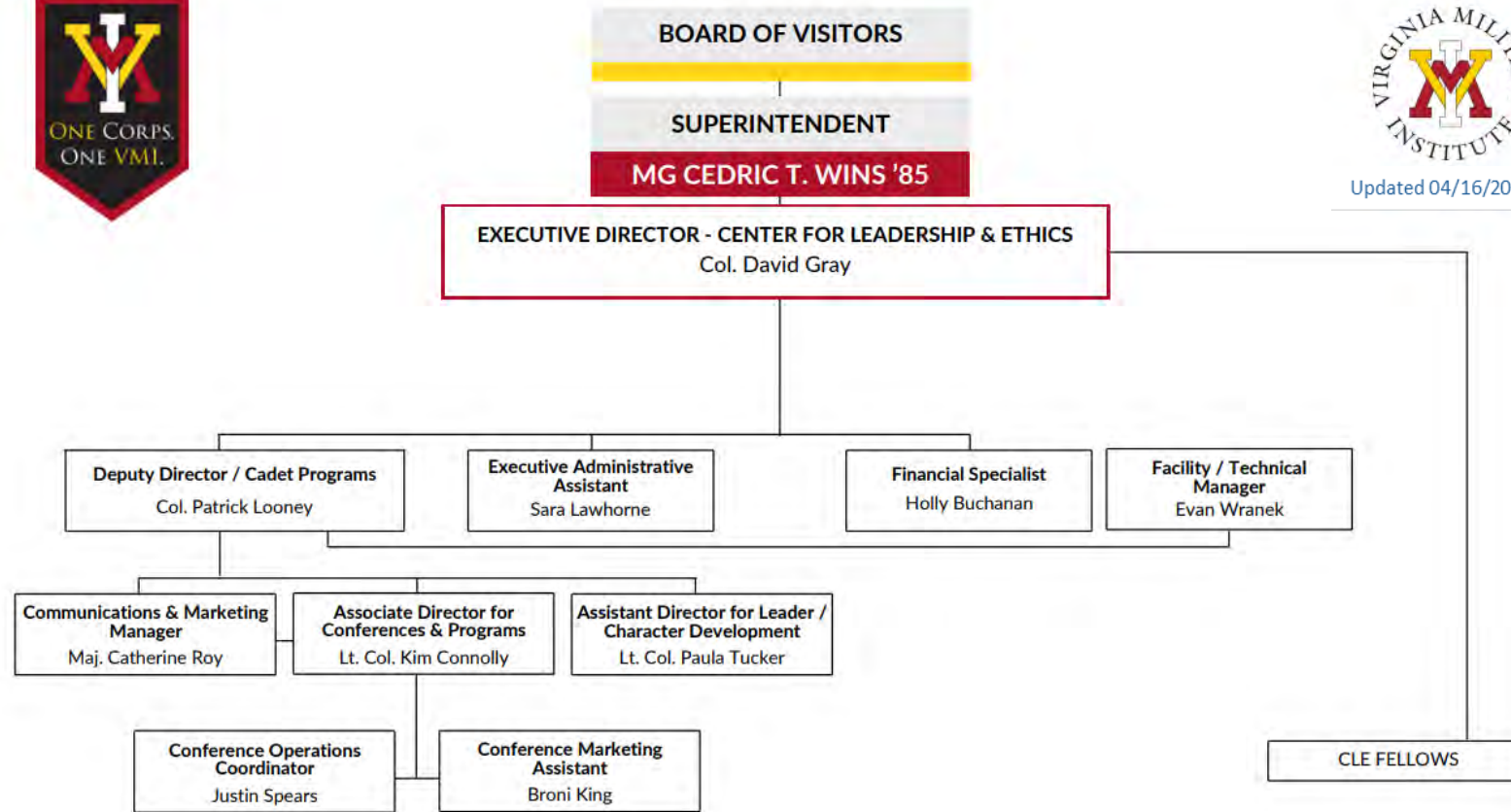
Darrell Campbell

Executive Administrative
Assistant
Melinda T. Jones





Updated 04/16/2025





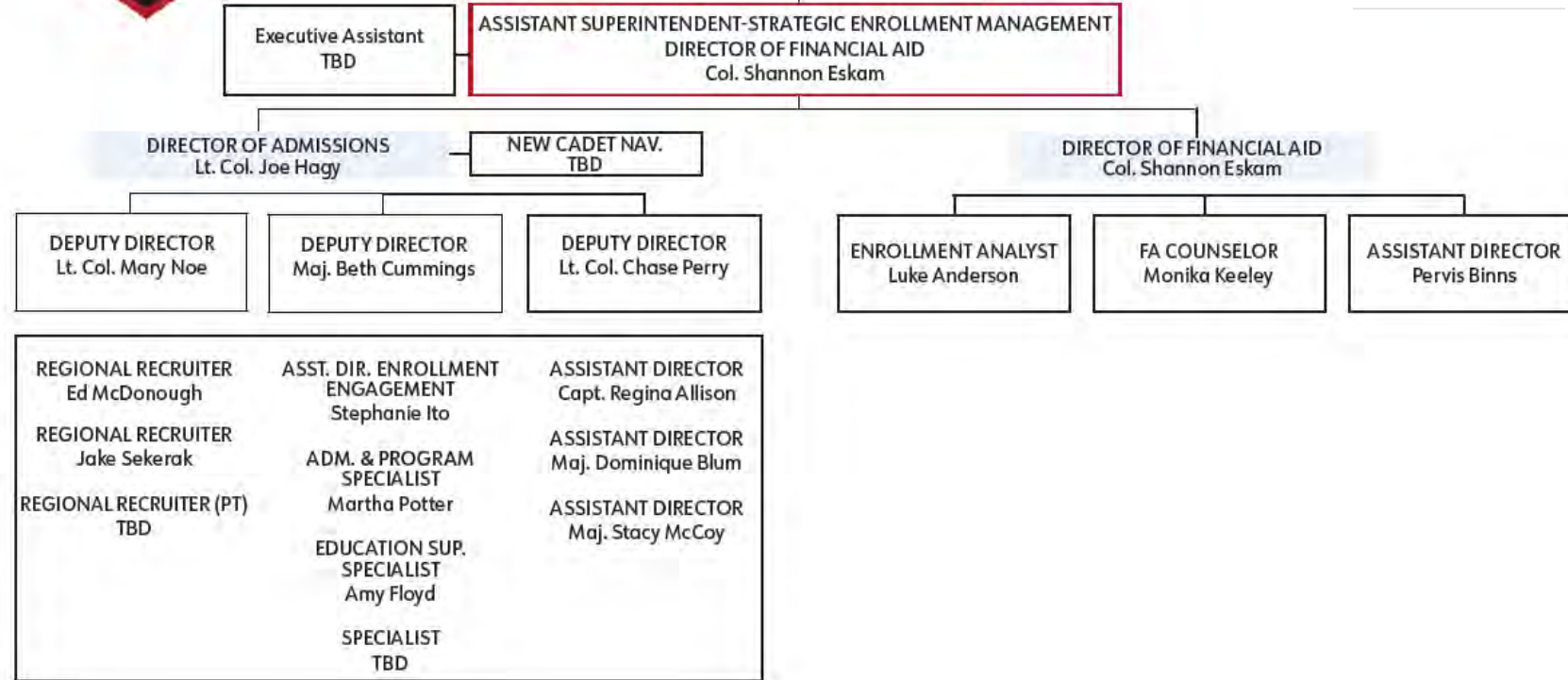
BOARD OF VISITORS

SUPERINTENDENT

MG CEDRIC T. WINS '85



Updated 04/16/2025





RANKINGS



Rankings

U.S. News and World Report

www.usnews.com/best-colleges

www.usnews.com/best-colleges/vmi-3753

2024-25 Best Colleges

No. 4 in Top Public Schools

No. 59 in National Liberal Arts Colleges

No. 30 in Best Undergraduate Engineering Programs (where doctorate is not offered)

Washington Monthly

<https://washingtonmonthly.com/2024/08/25/our-2024-college-rankings-are-out-see-how-your-school-did/>

No. 80/277 in Best Bang for the Buck Rankings: Southeast

Money magazine

money.com/best-colleges/

Best Colleges in America 2024

5-star rating (out of 5)

Also, on Best Colleges in the South, and Best Public Colleges lists

Web story: <https://www.vmi.edu/news/headlines/2023-2024/vmi-receives-5-stars-in-money-magazine-best-colleges-list.php>

PayScale

<https://www.payscale.com/college-salary-report/best-schools-by-state/bachelors/virginia>

Updated for 2024 – No. 3 in Virginia by Salary Potential

Forbes

www.forbes.com/top-colleges/

America's Top Colleges List 2023

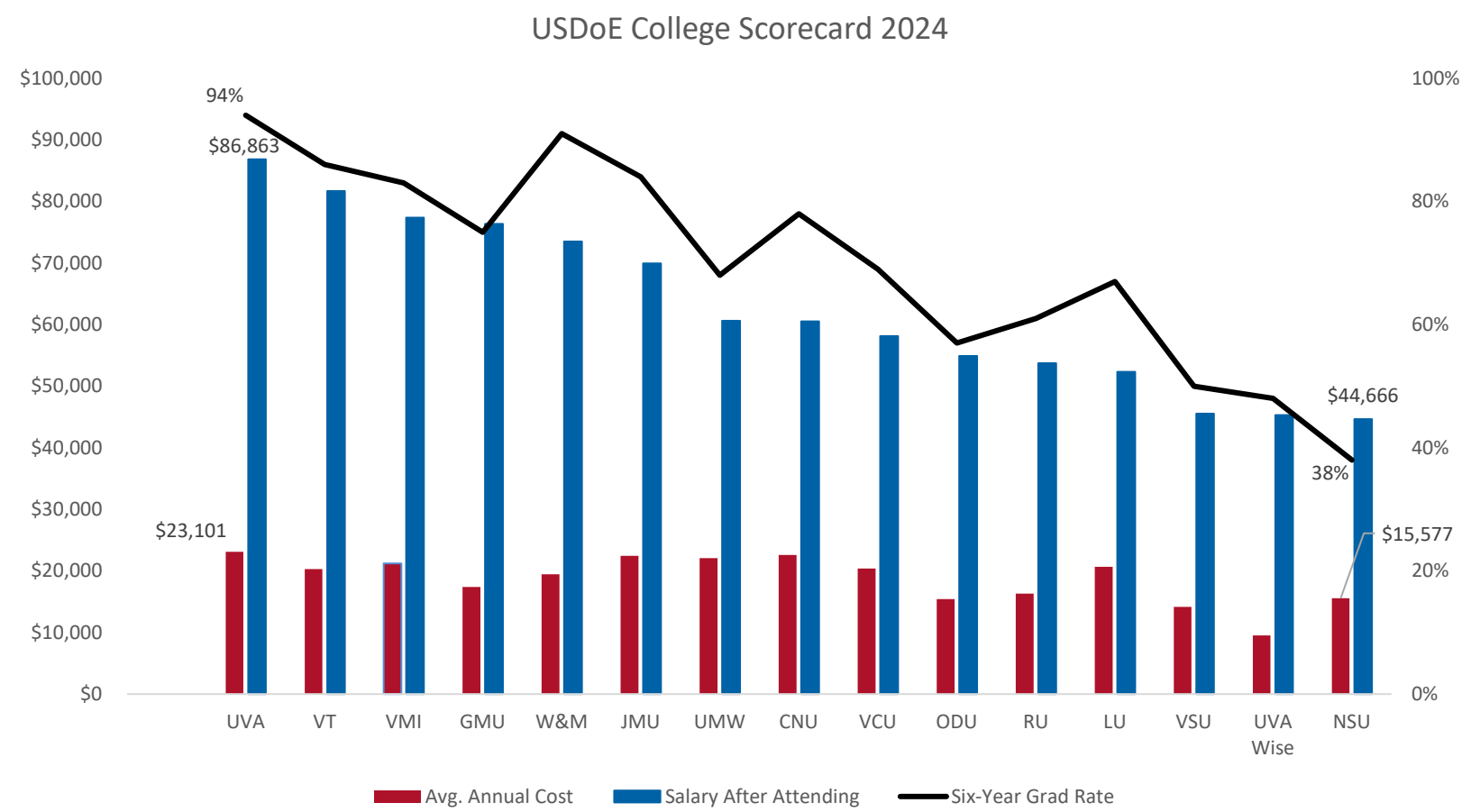
No. 319 Top Colleges

No. 153 in Public Colleges

No. 84 in Liberal Arts Universities



Salary After Attending VMI



Notes:
1. Source: [USDoE 2024 College Scorecard](#) (8 years after attending, received federal financial aid).
2. VMI Avg. Annual Cost is \$21,215, Salary After Attending is \$77,369, and Six-Year Graduation Rate is 83%.
3. VMI is 3rd salary after attending, 5th for cost for low-income families, 5th in graduation rates.



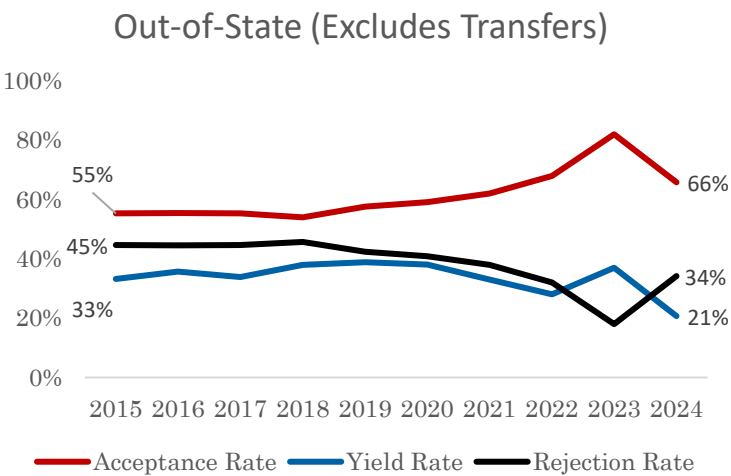
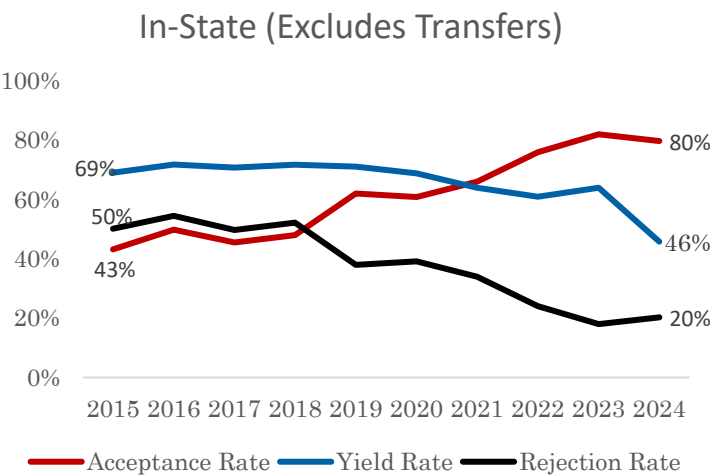


ADMISSIONS



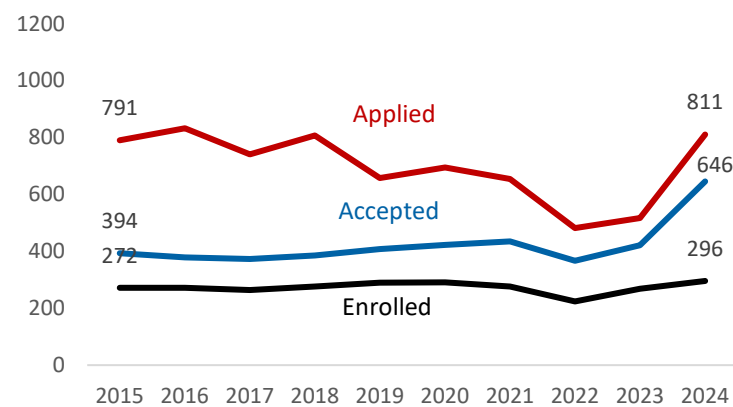
Admissions

Fall 2024		Applied	Accepted	Acceptance Rate	Enrolled	Yield Rate
In-State	First Time	811	646	79.7%	296	45.8%
	Transfer	30	19	63.3%	12	63.2%
	Total	841	665	79.1%	308	46.3%
Out-of-State	First Time	1255	826	65.8%	171	20.7%
	Transfer	67	33	49.3%	18	54.5%
	Total	1322	859	65.0%	189	22.0%
Total		2163	1524	70.5%	497	32.6%



Admissions

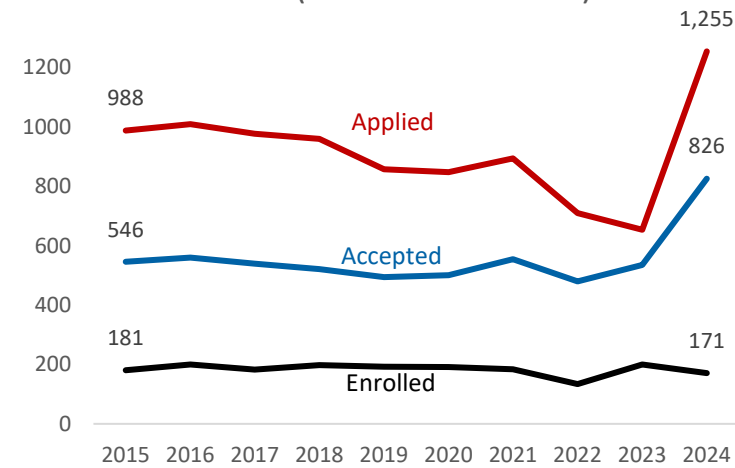
In-State Admissions Summary
(Excludes Transfers)



In-State Admissions Summary (Excludes Transfers)

	2015	2016	2017	2018	2019	2020	2021	2022	2023	2024
Applied	791	833	741	808	658	695	655	482	517	811
Accepted	394	379	373	386	408	423	435	367	422	646
Enrolled	272	272	264	277	290	291	277	224	269	296

Out-of-State Admissions Summary
(Excludes Transfers)

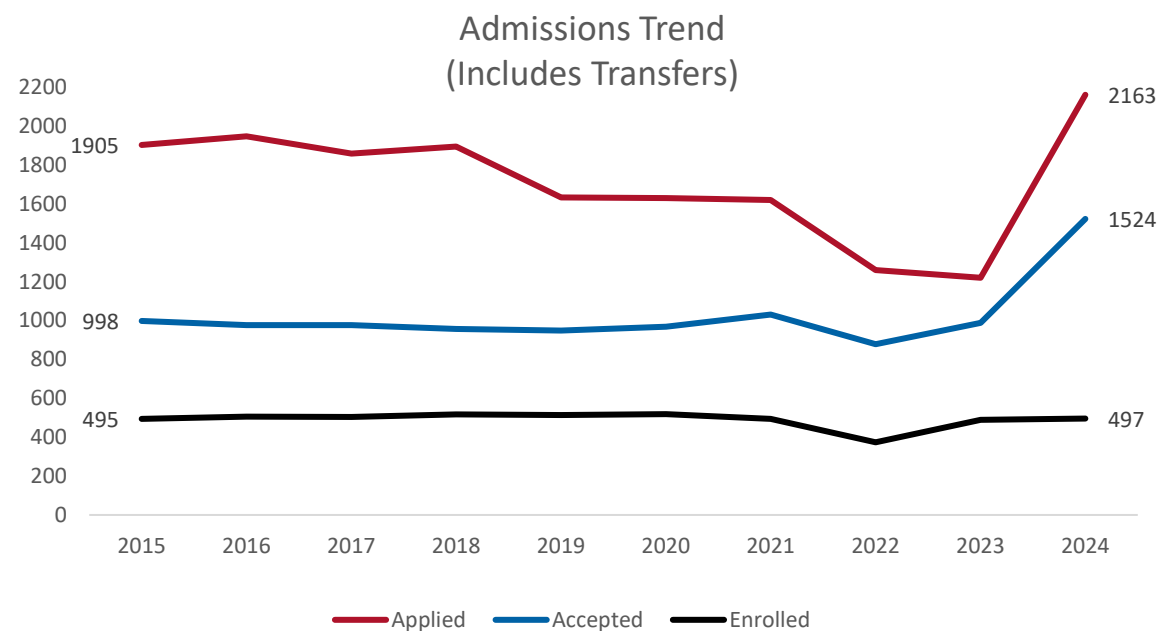


Out-of-State Admissions Summary (Excludes Transfers)

	2015	2016	2017	2018	2019	2020	2021	2022	2023	2024
Applied	988	1,010	977	960	858	848	894	710	654	1255
Accepted	546	560	540	521	494	501	555	480	535	826
Enrolled	181	200	183	198	192	191	184	134	200	171



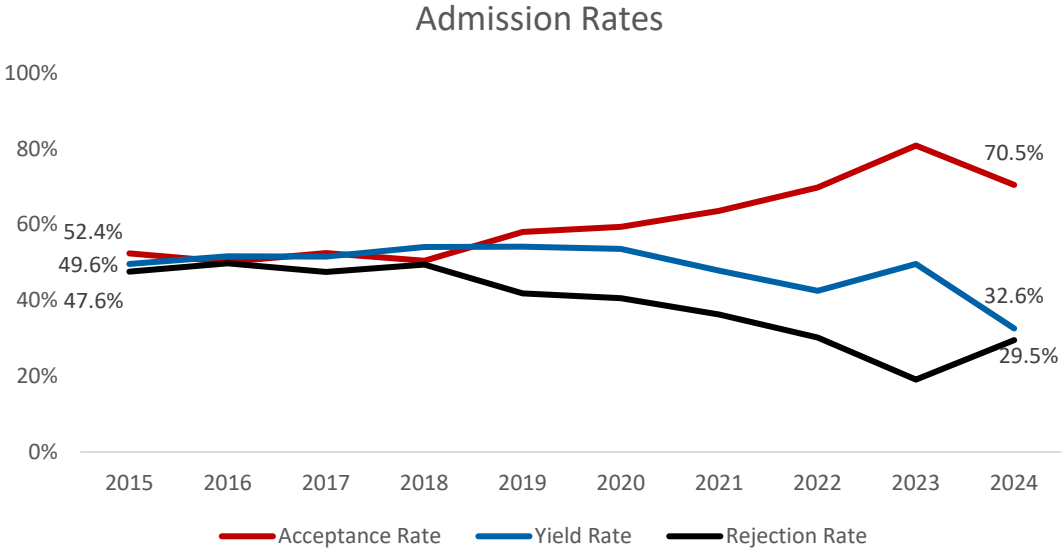
Admissions



	2015	2016	2017	2018	2019	2020	2021	2022	2023	2024
Applied	1905	1949	1861	1896	1634	1632	1621	1260	1221	2163
Accepted	998	978	977	958	950	969	1032	879	988	1524
Enrolled	495	506	504	518	515	519	494	374	490	497



Admissions

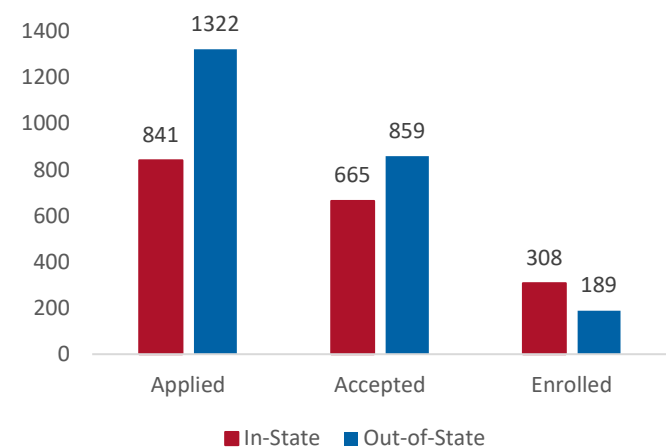


	2015	2016	2017	2018	2019	2020	2021	2022	2023	2024
Acceptance Rate	52.4%	50.2%	52.5%	50.5%	58.1%	59.4%	63.7%	69.8%	80.9%	70.5%
Yield Rate	49.6%	51.7%	51.6%	54.1%	54.2%	53.6%	47.9%	42.5%	49.6%	32.6%
Rejection Rate	47.6%	49.8%	47.5%	49.5%	41.9%	40.6%	36.3%	30.2%	19.1%	29.5%



Admissions

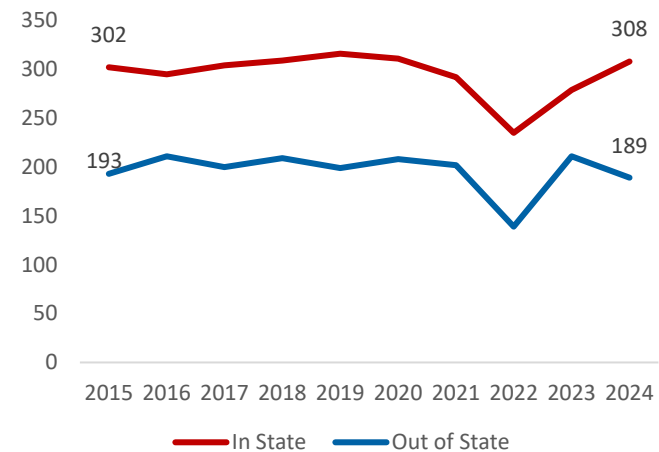
2024 Applicants by Residency



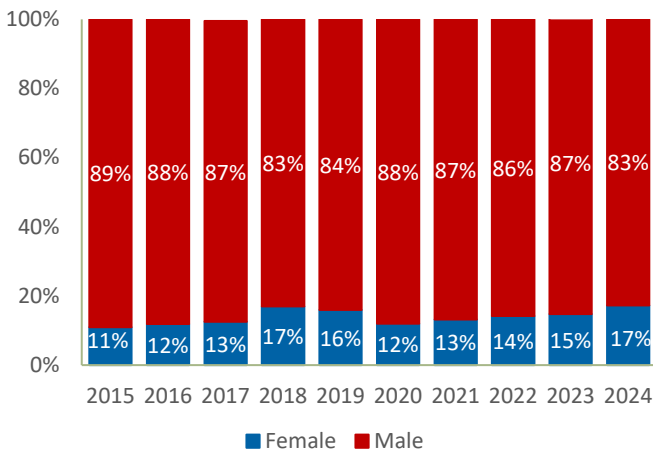
2024 Matriculants by Racial/Ethnic Category

American/Alaskan Native	2
Asian	24
Black or African American	49
Hawaiian/Pacific Islander	1
Hispanic/Latino	61
Multiple Races	30
Non-Resident Alien	10
White	318
Unknown	2
Total	497

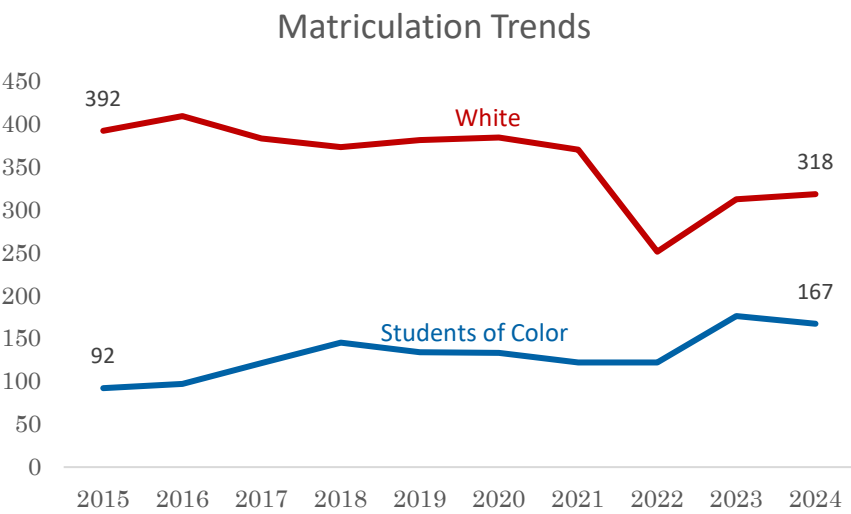
Matriculants by Residency 2015-2024



Matriculants by Gender 2015-2024



Admissions



Fall	American/ Alaskan Native	Asian	Black or African American	Hawaiian/ Pacific Islander	Hispanic/ Latino	Multiple Races	White	Unknown	Students of Color	Total
2015	4	14	35	0	32	7	392	0	92	495
2016	6	27	29	2	29	4	409	0	97	506
2017	3	27	31	0	52	8	383	0	121	504
2018	4	39	39	5	42	16	373	0	145	518
2019	5	34	36	2	40	17	381	0	134	515
2020	1	28	34	3	47	20	384	2	133	519
2021	2	28	27	1	44	20	370	2	122	494
2022	1	25	43	6	35	12	251	1	122	374
2023	4	32	58	3	58	21	312	2	176	490
2024	2	24	49	1	61	30	318	2	167	497



Admissions

SAT Scores of Incoming Classes 2015-24				
	25th Percentile Math	75th Percentile Math	25th Percentile Critical Reading	75th Percentile Critical Reading
2015	520	610	520	620
2016	530	620	530	620
2017	540	640	560	640
2018	540	650	560	660
2019	540	630	550	640
2020	530	620	540	640
2021	530	630	550	650
2022	535	640	570	660
2023	510	620	530	640
2024	500	640	550	630

Standardized Test Scores - Class of 2028	
Mean SAT Math Score	574
Mean SAT Verbal Score	584
Mean SAT Composite Score	1158
Mean ACT Composite Score	27
Mean TOEFL Score	565
Mean High School GPA	3.59

Notes:

1. Data obtained from the Admissions Data File. Scores based on FTF matriculating cadets.
2. Standardized tests are optional for VMI admission beginning Fall 2021.
3. The percentage of FTF who provide SAT scores in Fall 2022 is 17.0%, in Fall 2023 is 25.7%, and in Fall 2024 is 4.1%.
4. The percentage of FTF who provide ACT scores in Fall 2022 is 5.8%, in Fall 2023 is 9.4%, and in Fall 2024 is 3.4% .

ACT Scores of Incoming Classes 2015-24				
	25th Percentile Math	75th Percentile Math	25th Percentile English	75th Percentile English
2015	21	27	21	27
2016	23	27	22	27
2017	23	27	22	28
2018	22	28	22	28
2019	22	26	21	26
2020	21	27	21	28
2021	21	26	20	26
2022	20	27	22	30
2023	23	26	21	28
2024	23	29	22	27

High School Rank - Class of 2028		
	Enrolled	% of Ranked Students
Top Quarter	75	28.4%
Second Quarter	99	37.5%
Third Quarter	65	24.6%
Fourth Quarter	25	9.5%
Unranked/Transfer	203	



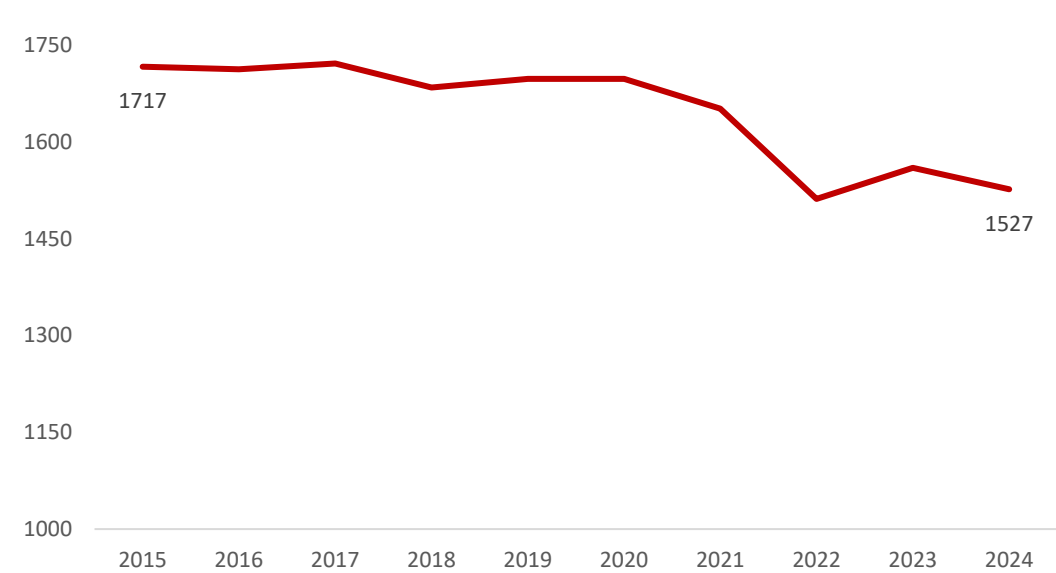


ENROLLMENT



Enrollment

Fall Census Enrollment Summary



Year	Headcount
2015	1717
2016	1713
2017	1722
2018	1685
2019	1698
2020	1698
2021	1652
2022	1512
2023	1560
2024	1527



Enrollment

2024 Enrollment by Ethnicity & Gender

Race & Ethnicity	Male	Female	Total
Foreign			
Non-Resident Alien	29	1	30
In-State			
American/Alaska Native	5		5
Asian	38	8	46
Black or African American	68	18	86
Hispanic/Latino	80	21	101
Hawaiian/Pacific Islander	4	3	7
Multiple Races	40	2	42
Not Reported/Unknown	3		3
White	566	79	645
Out-of-State			
American/Alaska Native	2		2
Asian	24	2	26
Black or African American	30	2	32
Hispanic/Latino	47	13	60
Hawaiian/Pacific Islander	1	1	2
Multiple Races	22	4	26
Not Reported/Unknown	2	1	3
White	346	65	411
Grand Total	1307	220	1527



Enrollment

United States Cadets

Residence	2024	2025	2026	2027	2028	Total	Residence	2023	2024	2025	2026	2027	Total
Alabama		2		5	2	9	Montana		1				1
Alaska				2	1	3	Nebraska			1			1
Arizona			1	1	2	4	Nevada		1		1	1	3
California		3	8	13	14	38	New Hampshire			1	1	1	3
Colorado	1	4	2	1	4	12	New Jersey		9	6	4	8	27
Connecticut			2	1		3	New Mexico		1				1
Delaware		1	2	1	2	6	New York		5	2	4	7	18
District of Columbia		1			1	2	North Carolina	2	12	13	10	14	51
Florida		8	7	4	12	31	Ohio		3	4	8	6	21
Georgia		9	7	10	8	34	Oregon				2		2
Hawaii		2			1	3	Pennsylvania	1	10	13	21	18	63
Idaho			1	1	1	3	Rhode Island					2	2
Illinois		4	1	4	1	10	South Carolina		4	1	5	8	18
Indiana		3		1	1	5	Tennessee		4	5	8	4	21
Kansas		1	1	1	3	6	Texas	1	14	4	9	10	38
Kentucky		2	6	1	1	10	Vermont		1				1
Louisiana			2	1	3	6	Virginia	20	207	183	222	303	935
Maine				1		1	Washington		2		2	1	5
Maryland	1	15	4	17	14	51	West Virginia		5		4	2	11
Massachusetts		1	3		4	8	Wisconsin			3	1		4
Michigan		2		2	1	5	Guam					1	1
Minnesota		1	3	2	1	7	Unknown	1	2	1	2	1	7
Mississippi			1		1	2	Total State						
Missouri		1	1	1	1	4	Breakdown	27	341	289	374	466	1497



Enrollment

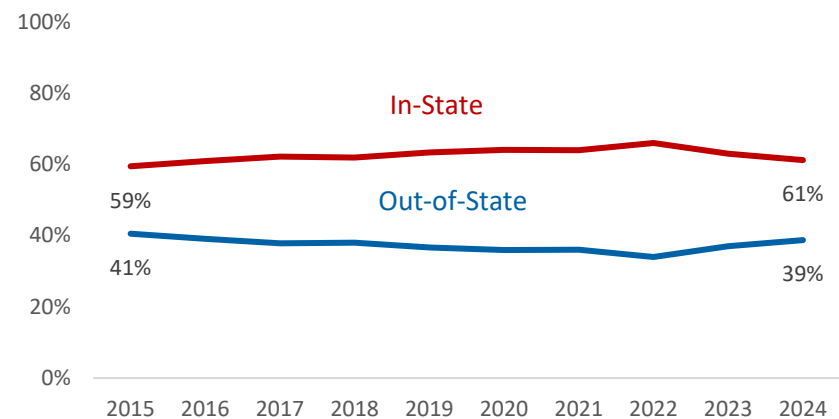
Foreign Cadets

Residence	2024	2025	2026	2027	2028	Total
Cambodia			1			1
China (People's Republic)			1		1	2
Lithuania					1	1
Myanmar					2	2
Sweden					1	1
Taiwan		3	3	4	4	14
Thailand		1	2	2		5
Turkey					1	1
United Kingdom			1		1	2
Viet Nam		1				1
Foreign Total		5	8	6	11	30
US & Foreign Total	27	346	297	380	477	1527



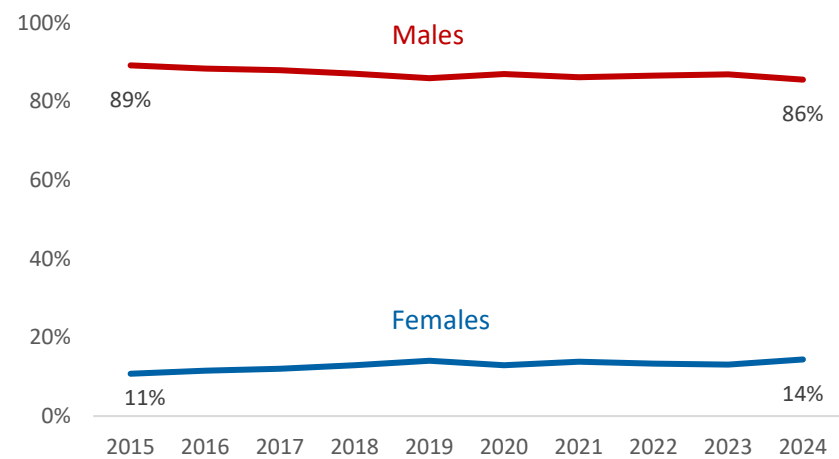
Enrollment

Residency Enrollment Trends



Year	In-State	Out	Total
2015	1021	696	1717
2016	1043	670	1713
2017	1071	651	1722
2018	1044	641	1685
2019	1075	623	1698
2020	1088	610	1698
2021	1050	602	1652
2022	990	522	1512
2023	985	575	1560
2024	935	592	1527

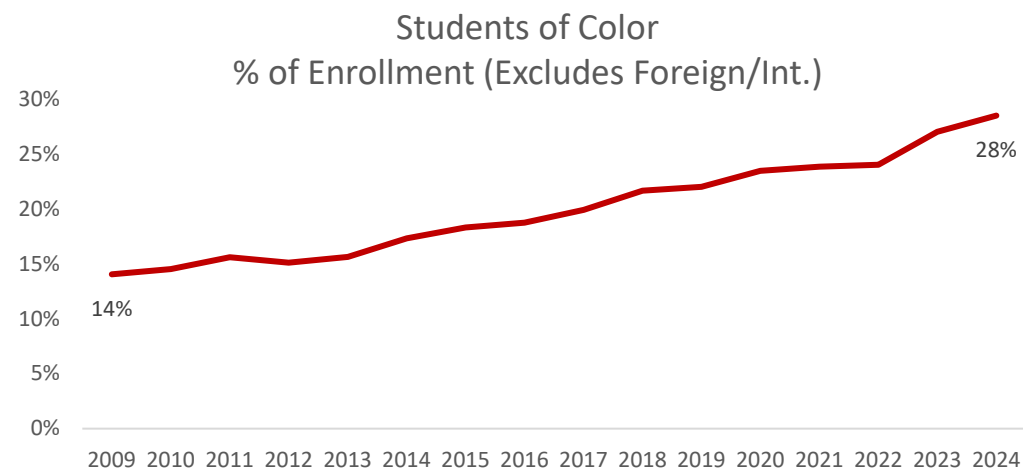
Male & Female Enrollment Trends



Year	Males	Female	Total
2015	1532	185	1717
2016	1515	198	1713
2017	1515	207	1722
2018	1467	218	1685
2019	1459	239	1698
2020	1478	220	1698
2021	1424	228	1652
2022	1310	202	1512
2023	1356	204	1560
2024	1307	220	1527



Enrollment

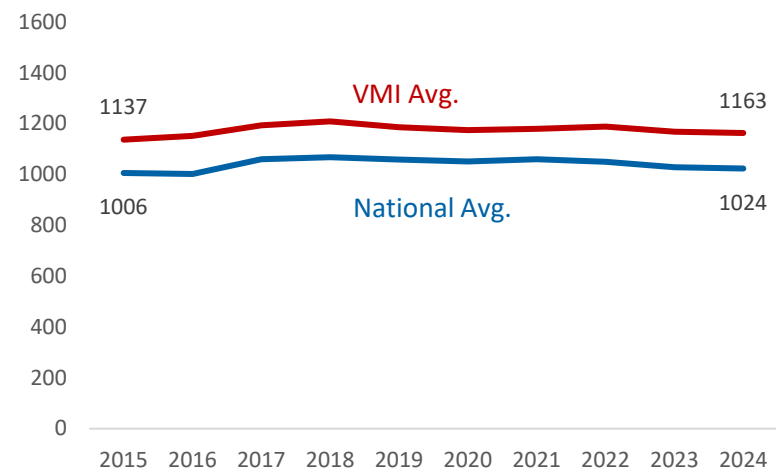


Fall	Foreign./ Int.	White	Af. American/ Black	American Indian/ Native American	Asian/ Pacific Islander	Hispanic	Multi- Race	Unknown	Total	# Students of Color
2015	29	1378	99	8	84	89	29	1	1717	309
2016	27	1369	103	10	79	100	24	1	1713	316
2017	28	1356	103	9	77	122	26	1	1722	337
2018	31	1295	108	8	82	125	35	1	1685	358
2019	30	1301	102	11	84	129	41	0	1698	367
2020	31	1275	99	7	92	142	51	1	1698	391
2021	28	1230	102	8	92	134	57	1	1652	394
2022	27	1120	102	5	82	124	49	3	1512	362
2023	24	1119	111	6	89	146	61	4	1560	413
2024	30	1056	118	7	81	161	68	6	1527	435

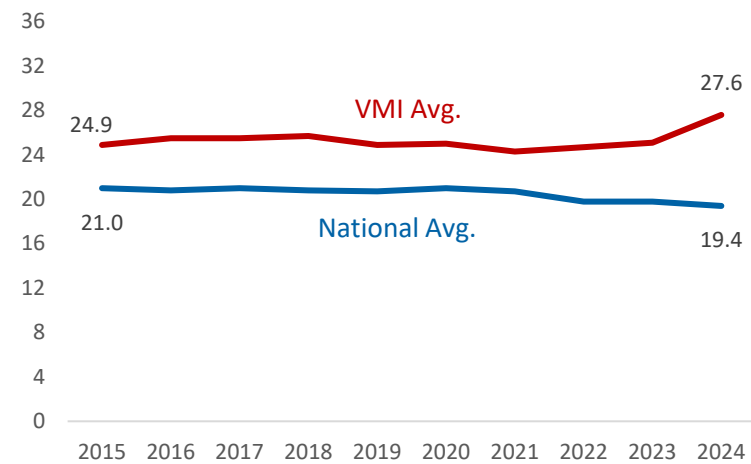


Enrollment

Cadet Avg. SAT vs. National Avg.



Cadet Avg. ACT vs National Avg.

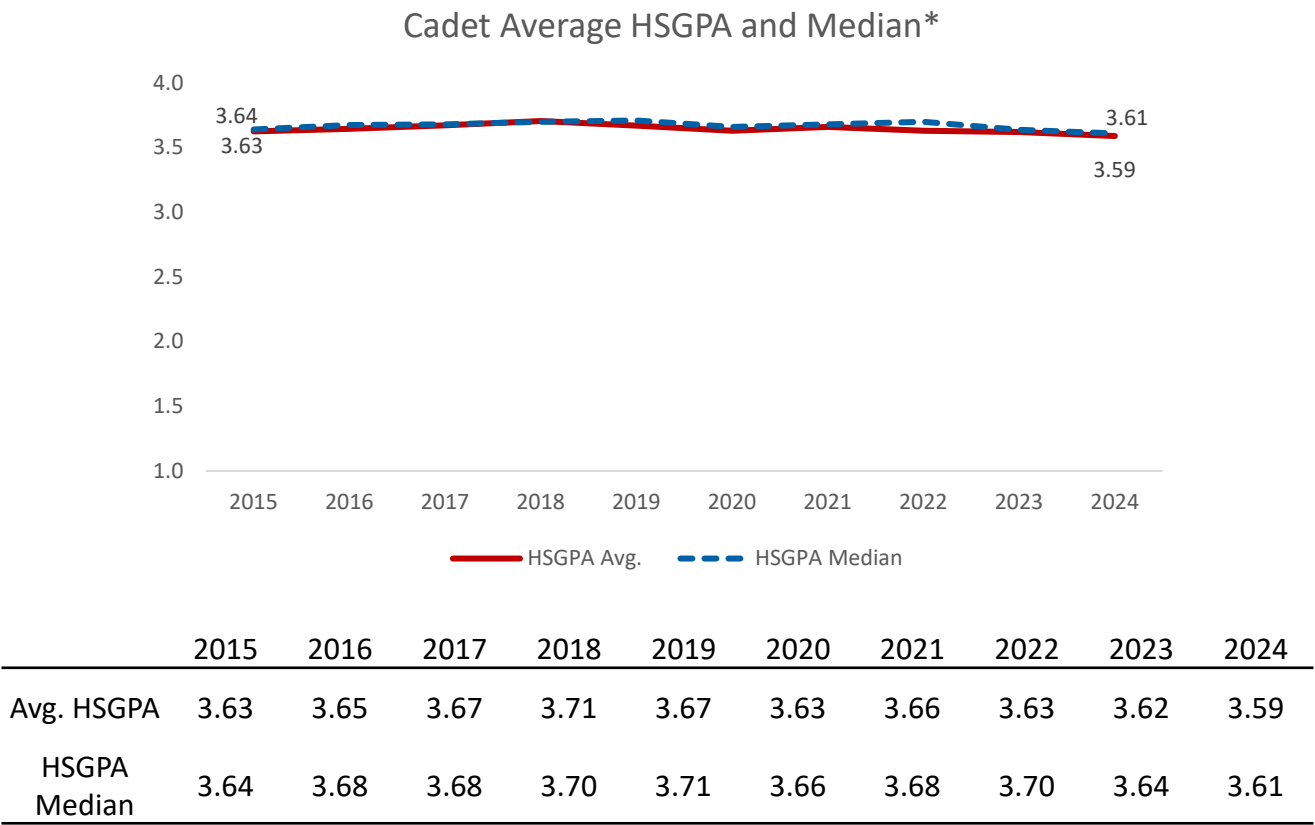


	2015	2016	2017	2018	2019	2020	2021	2022	2023	2024
Cadet Avg. SAT	1137	1152	1193	1209	1186	1174	1180	1189	1168	1163
National Avg. SAT	1006	1002	1060	1068	1059	1051	1060	1050	1028	1024
Cadet Avg. ACT	24.9	25.5	25.5	25.7	24.9	25.0	24.3	24.7	25.1	27.6
National Avg. ACT	21.0	20.8	21.0	20.8	20.7	20.6	20.3	19.8	19.8	19.4

- Notes:
- 1. A new SAT test was adopted in 2017.
 - 2. SAT and ACT scores are based on FTF matriculates at census date.
 - 3. Standardized tests are optional for VMI admission from Fall 2021.
 - 4. The percentage of FTF who provide SAT scores in Fall 2022 is 17.0%, in Fall 2023 is 25.7%, and in Fall 2024 is 5.2%.
 - 5. The percentage of FTF who provide ACT scores in Fall 2022 is 5.8%, in Fall 2023 is 9.4% %, and in Fall 2024 is 3.1%.



Enrollment



Notes:

1. HSGPA based on FTF matriculates at census date.

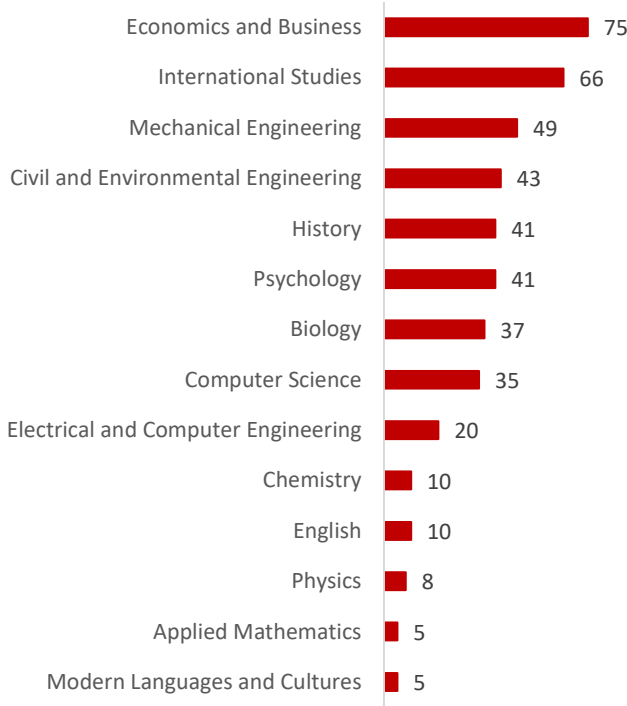
2. *Average is the mathematical mean of a group of numbers while the median is the middle number in a set of data. Large differences between the two could indicate skewness or the deviation and distribution of individual scores in relation to the mean.



Enrollment

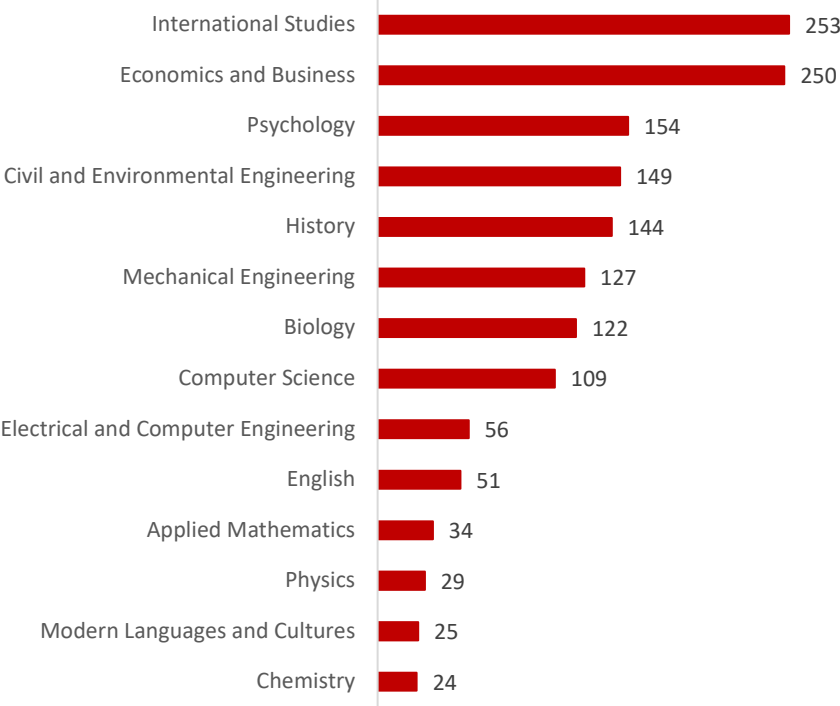
Curriculum Choices: Class of 2028

(Enrollment on Census Date)



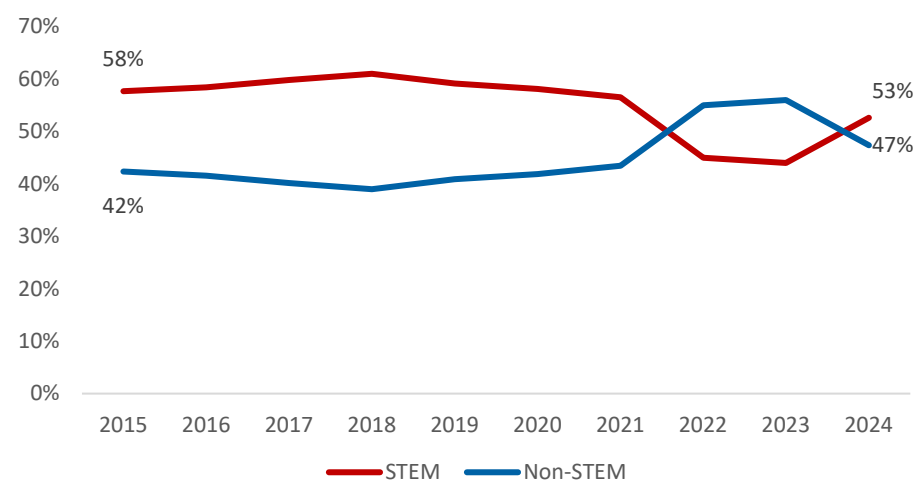
2028 Enrollment by Major

(All Classes Total)



Enrollment

Enrollment Trends in STEM



STEM Programs:
 Applied Mathematics
 Biology
 Chemistry
 Civil & Environmental Engineering
 Computer Science
 Electrical & Computer Engineering
 Mechanical Engineering
 Physics
 Psychology

Year	STEM	Non-STEM	Total
FL15	990	727	1717
FL16	1001	712	1713
FL17	1030	692	1722
FL18	1028	657	1685
FL19	1004	694	1698
FL20	987	711	1698
FL21	934	718	1652
FL22	829	683	1512
FL23	841	719	1560
FL24	804	723	1527

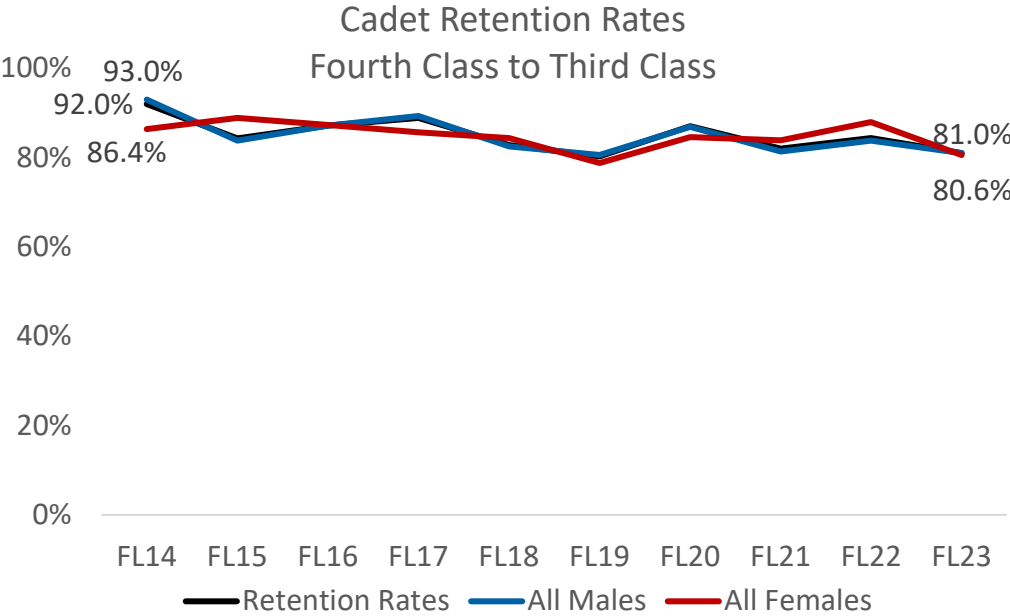




RETENTION RATES



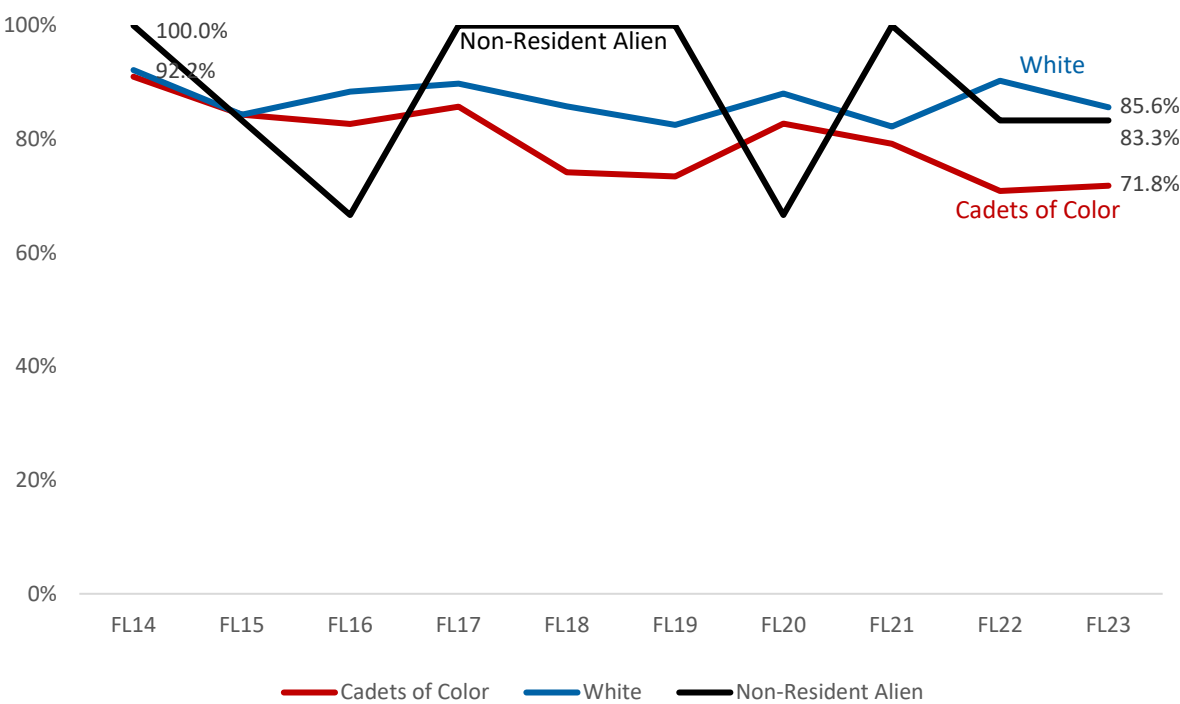
Retention



	FL14	FL15	FL16	FL17	FL18	FL19	FL20	FL21	FL22	FL23
Retention Rates	92.0%	84.3%	87.2%	88.9%	82.8%	80.3%	86.6%	81.7%	84.4%	81.0%
Males	93.0%	83.8%	87.2%	89.3%	82.5%	80.6%	86.9%	81.4%	83.8%	81.0%
Females	86.4%	88.9%	87.3%	85.7%	84.4%	78.8%	84.6%	83.9%	88.0%	80.6%



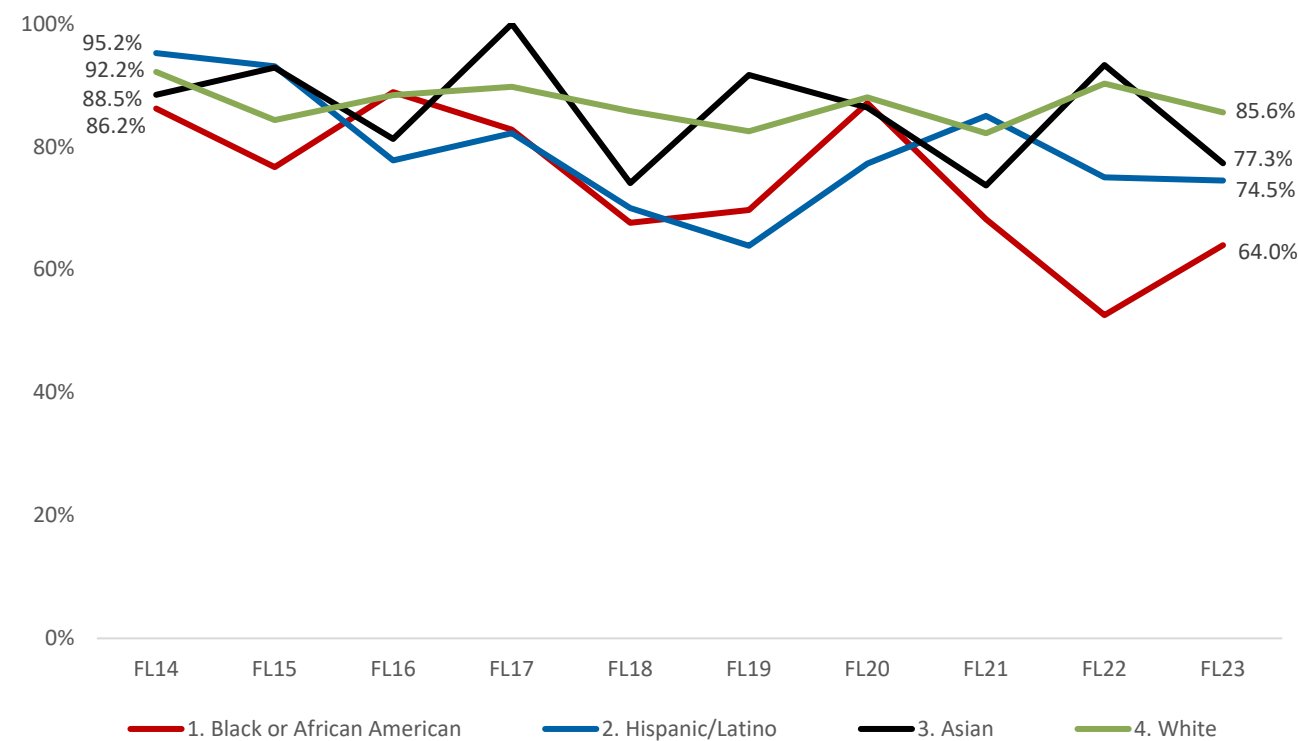
Retention by Race



	FL14	FL15	FL16	FL17	FL18	FL19	FL20	FL21	FL22	FL23
Retention Rate	92.0%	84.3%	87.2%	88.9%	82.8%	80.3%	86.6%	81.7%	84.4%	81.0%
Cadets of Color	91.0%	84.3%	82.7%	85.7%	74.2%	73.5%	82.8%	79.2%	70.9%	71.8%
White	92.2%	84.3%	88.4%	89.8%	85.8%	82.5%	88.0%	82.2%	90.3%	85.6%



Retention by Race



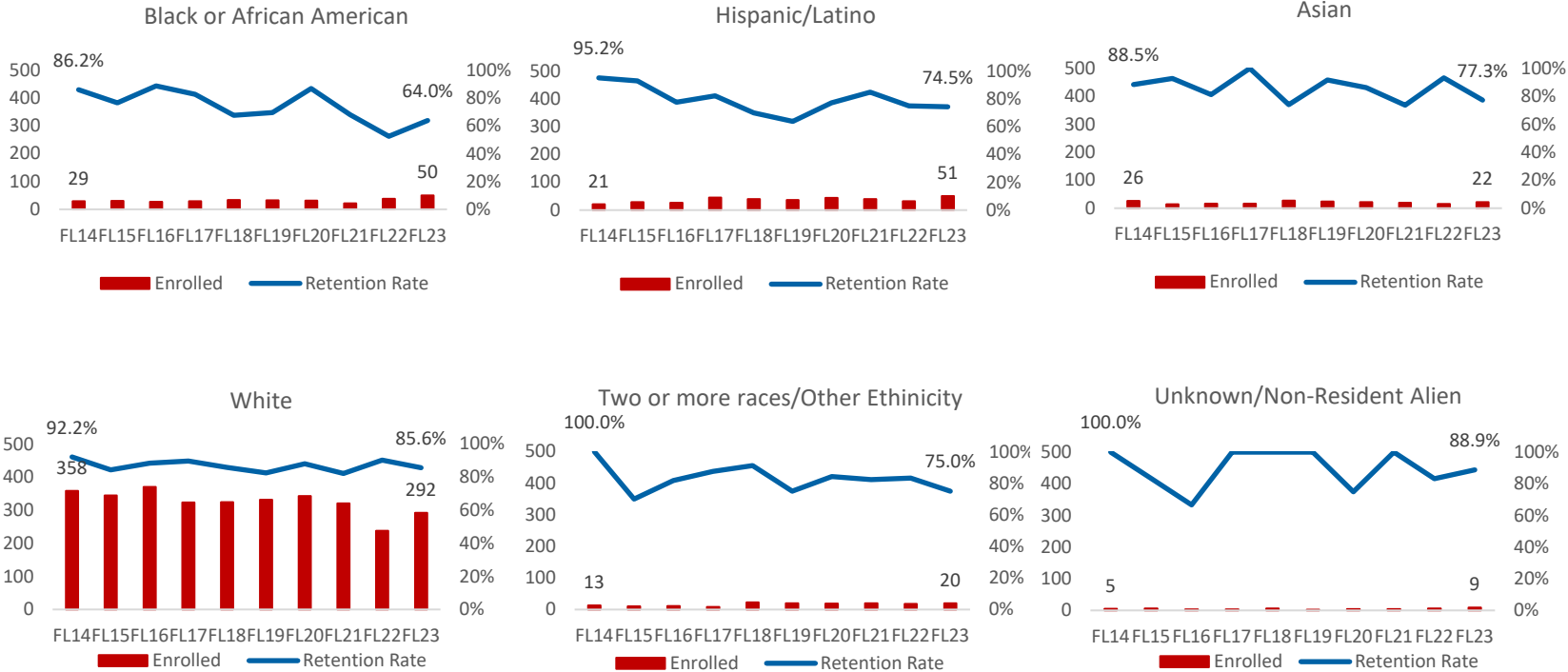
Notes:

The retention rates for Cadets of Color fluctuate yearly.

The groups Two or more Races/Other Ethnicity and Unknown/Non-resident Aliens are excluded from this chart.



Retention by Race

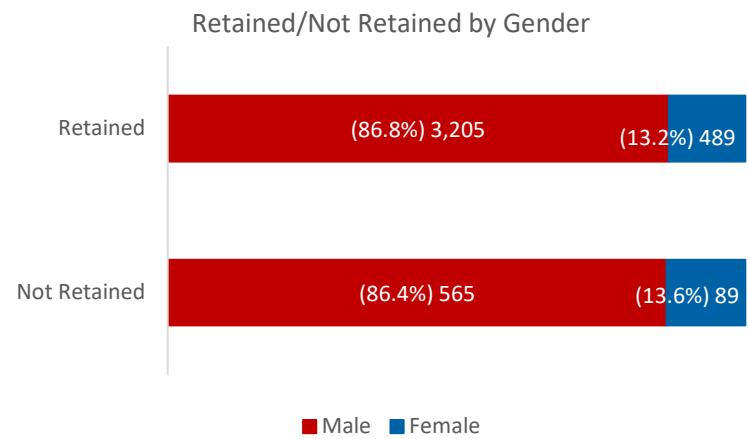


- Notes:
- 1. White cadets have the most stable trend of retention rate from year to year.
 - 2. The retention rates for Unknown/Non-resident Aliens changes dramatically due to a small population.

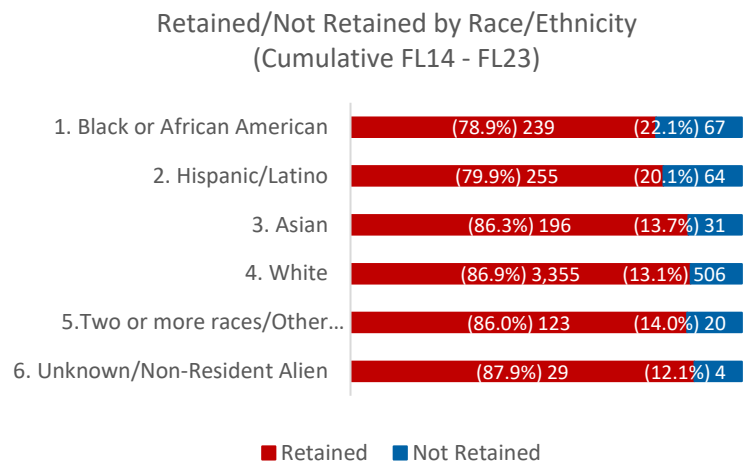


Retention

By Gender and Race/Ethnicity (FL14 - FL23 Cumulative)



On average, 13.2% of the cadets in the Retained group are female students; in the Not Retained group, the percentage is 13.6%.

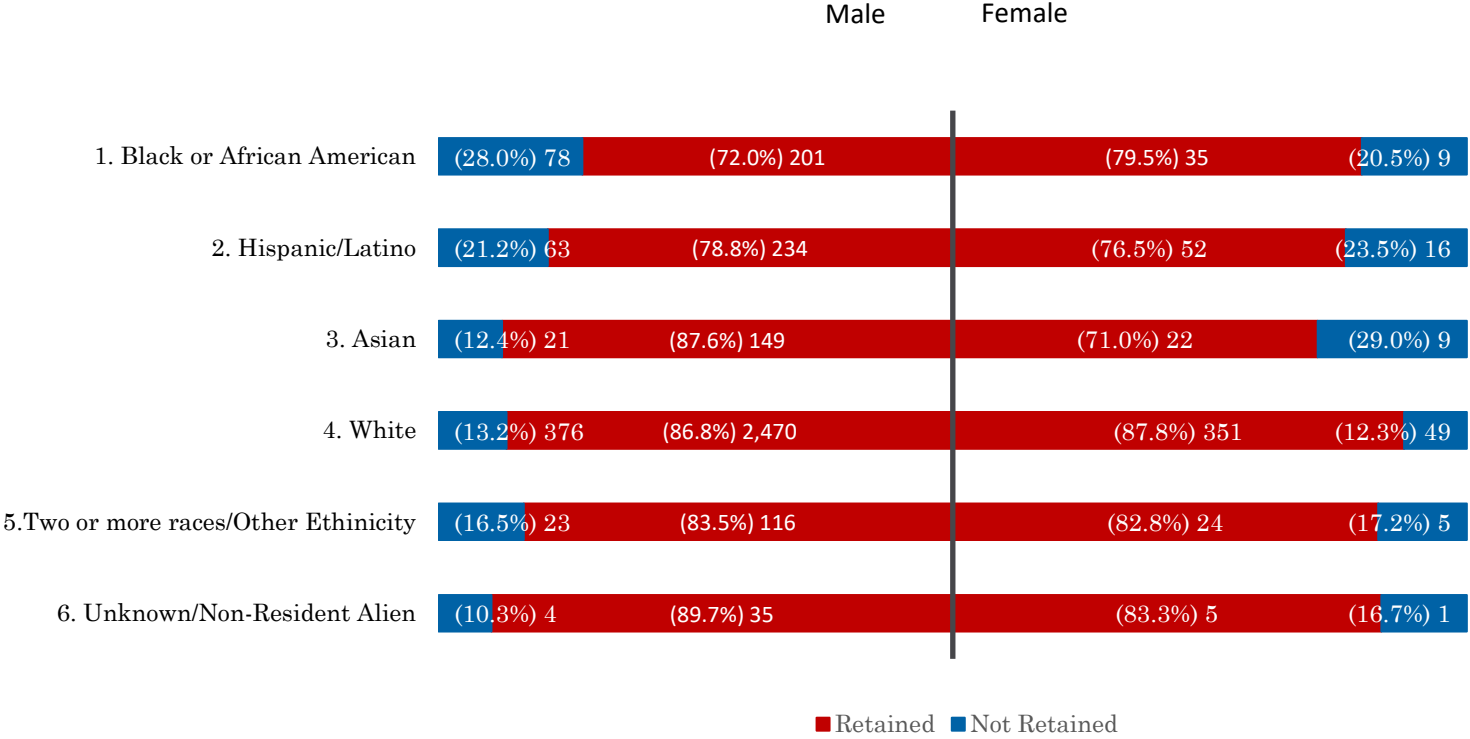


On average, Black or African American & Hispanic/Latino cadets have lower retention rates than other race/ethnicity groups.

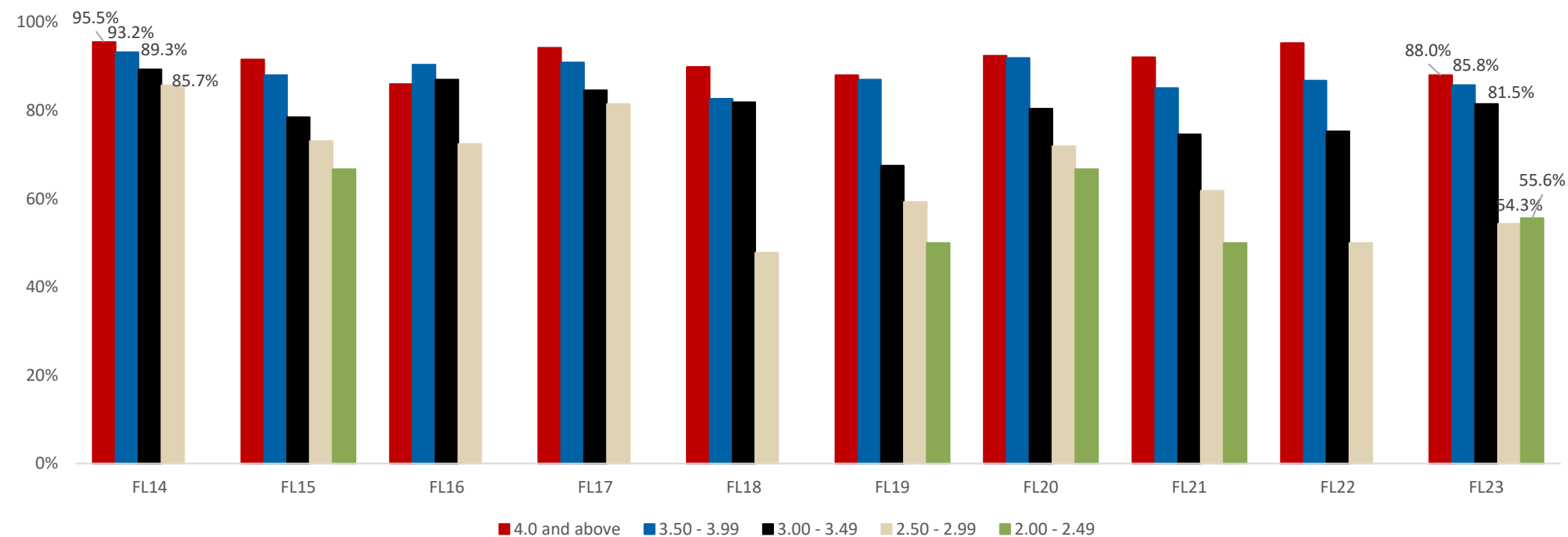


Retention

By Gender and Race/Ethnicity
(FL 14 – FL 23 Cumulative)



Retention by HSGPA



HS GPA Range	FL14	FL15	FL16	FL17	FL18	FL19	FL20	FL21	FL22	FL23
1. 4.0 and above	95.5%	91.6%	86.0%	94.2%	89.9%	88.0%	92.4%	92.1%	95.3%	88.0%
2. 3.50 - 3.99	93.2%	88.0%	90.4%	90.9%	82.7%	87.0%	91.9%	85.1%	86.8%	85.8%
3. 3.00 - 3.49	89.3%	78.5%	87.0%	84.6%	81.9%	67.5%	80.4%	74.6%	75.3%	81.5%
4. 2.50 - 2.99	85.7%	73.1%	72.4%	81.5%	47.8%	59.3%	71.9%	61.8%	50.0%	54.3%
5. 2.00 - 2.49	-	66.7%	-	0.0%	-	50.0%	66.7%	50.0%	0.0%	55.6%

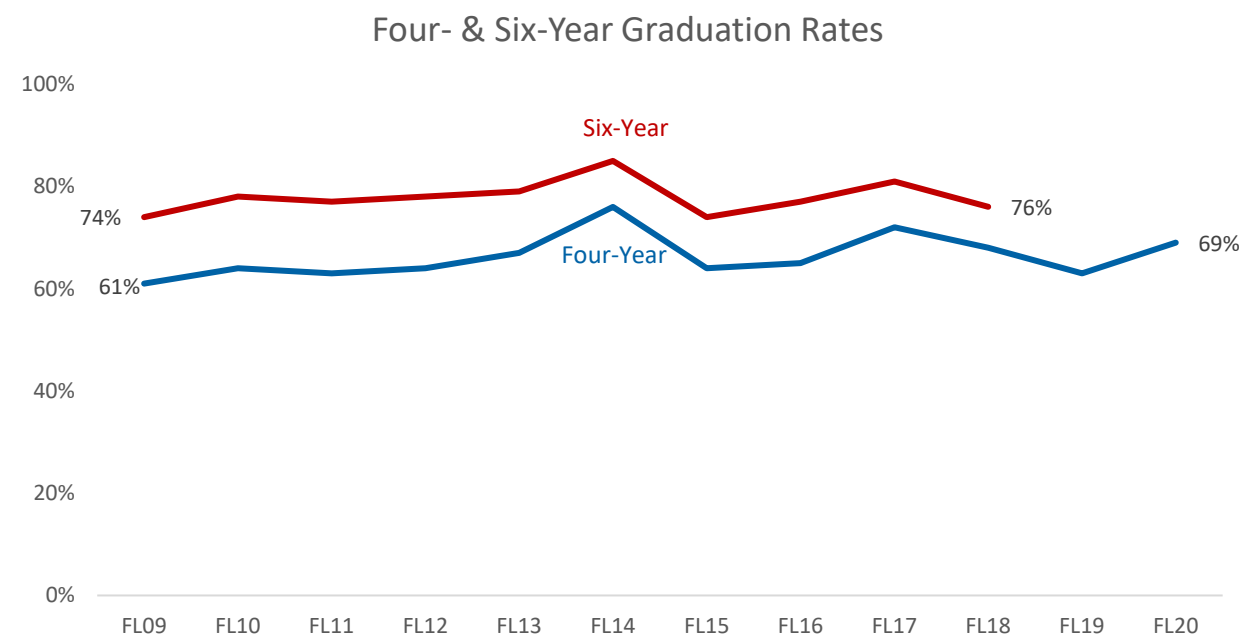




GRADUATION RATES



Graduation Rates

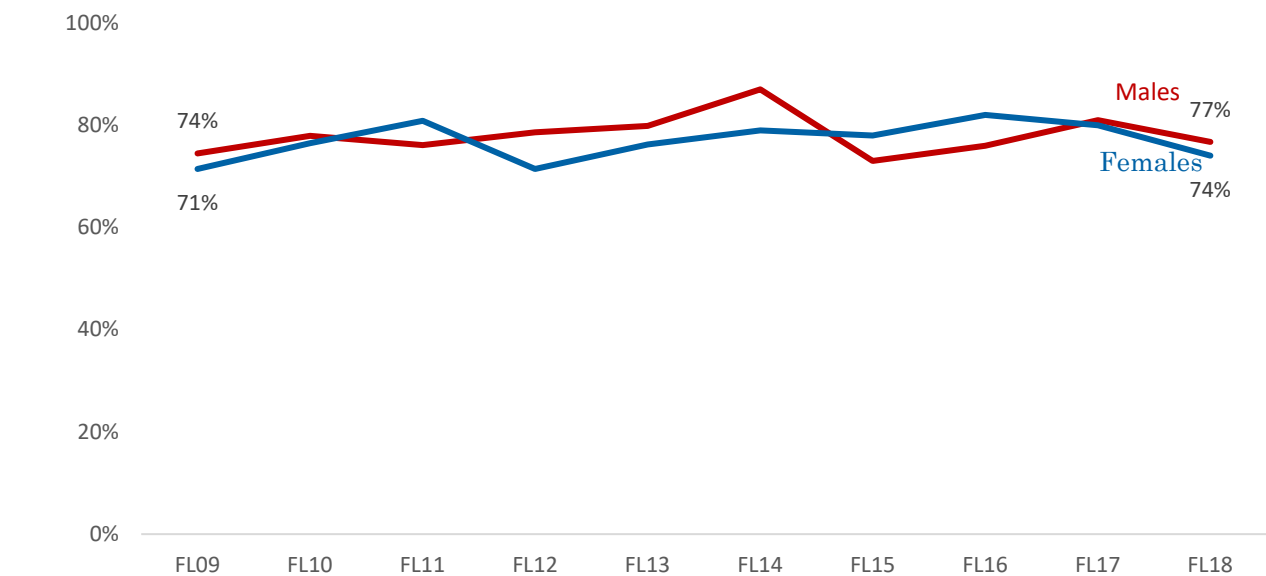


Four- & Six-Year Graduation Rates												
	FL09	FL10	FL11	FL12	FL13	FL14	FL15	FL16	FL17	FL18	FL19	FL20
Four-Year	61%	64%	63%	64%	67%	76%	64%	65%	72%	68%	63%	69%
Six-Year	74%	78%	77%	78%	79%	85%	74%	77%	81%	76%		

Note: Graduation rates are calculated based on the Fall Census Day headcount for First-Time, First-Year cadets.



Six-Year Graduation Rates by Gender



Six-Year Graduation Rates by Gender										
	FL09	FL10	FL11	FL12	FL13	FL14	FL15	FL16	FL17	FL18
Males	75%	78%	76%	79%	80%	87%	73%	76%	82%	77%
Females	71%	76%	81%	71%	76%	79%	78%	84%	80%	74%

Note: Graduation rates are calculated based on the Fall Census Day headcount for First-Time, First-Year cadets.



Graduation Rates by Gender and Race

Female Six-Year Graduation Rates by Race/Ethnicity

	FL09	FL10	FL11	FL12	FL13	FL14	FL15	FL16	FL17	FL18
American/Alaska Native		50%						100%		100%
Asian	100%	25%	100%	100%	0%	33%	100%	67%	67%	50%
Black or African American	100%	67%	67%	0%	100%	75%	83%	100%	67%	100%
Hispanic/Latino	100%	100%	80%	100%	80%	100%	75%	67%	86%	83%
Hawaiian/Pacific Isl.										
Multiple Races			100%	50%	100%	100%	100%	100%	100%	75%
Non-Resident Alien	100%	50%		100%		100%				100%
White	64%	85%	81%	72%	75%	79%	76%	84%	80%	71%

Note: Graduation rates are calculated based on the Fall Census Day headcount for First-Time, First-Year cadets.



Graduation Rates by Gender and Race

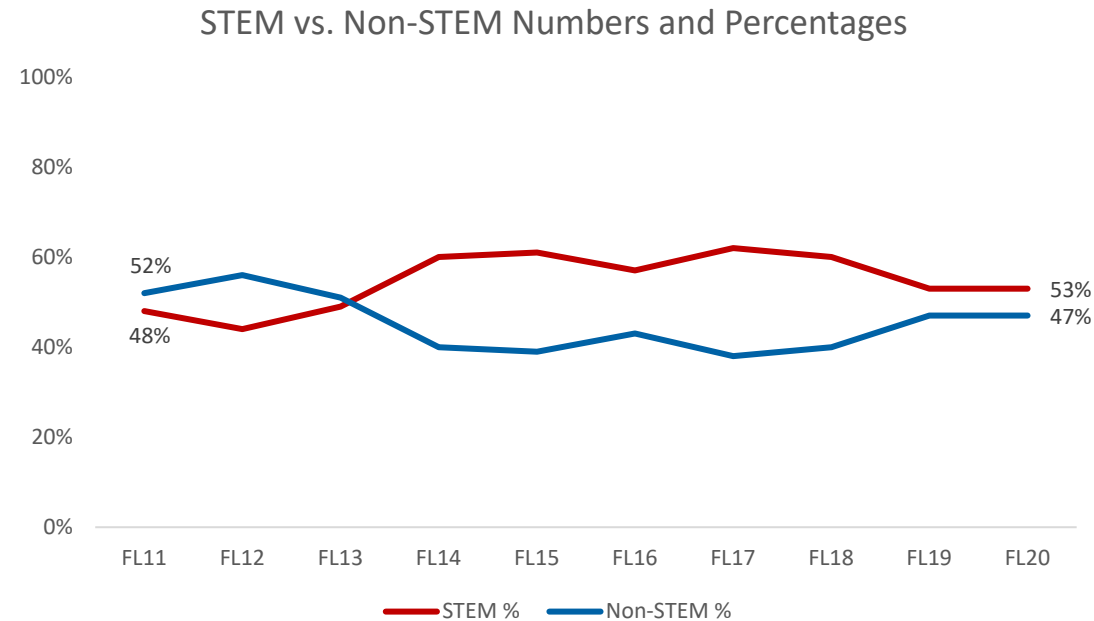
Male Six-Year Graduation Rates by Race/Ethnicity

	FL09	FL10	FL11	FL12	FL13	FL14	FL15	FL16	FL17	FL18
American/Alaska Native	100%		50%	100%		100%		50%	0%	100%
Asian	73%	100%	88%	93%	73%	91%	78%	77%	92%	76%
Black or African American	76%	55%	42%	64%	75%	67%	46%	71%	50%	54%
Hispanic/Latino	69%	67%	79%	60%	71%	88%	68%	67%	82%	65%
Hawaiian/Pacific Isl.			0%	100%	100%	67%		50%		100%
Multiple Races	0%	50%	100%	100%	67%	80%	100%	100%	67%	83%
Non-Resident Alien	83%	100%	75%	60%	75%	100%	67%	67%	100%	100%
White	76%	78%	78%	79%	81%	87%	73%	77%	85%	79%

Note: Graduation rates are calculated based on the Fall Census Day headcount for First-Time, First-Year cadets.



Four-Year Graduation Trends



Four-Year Graduation Trend: STEM vs. Non-STEM at Graduation

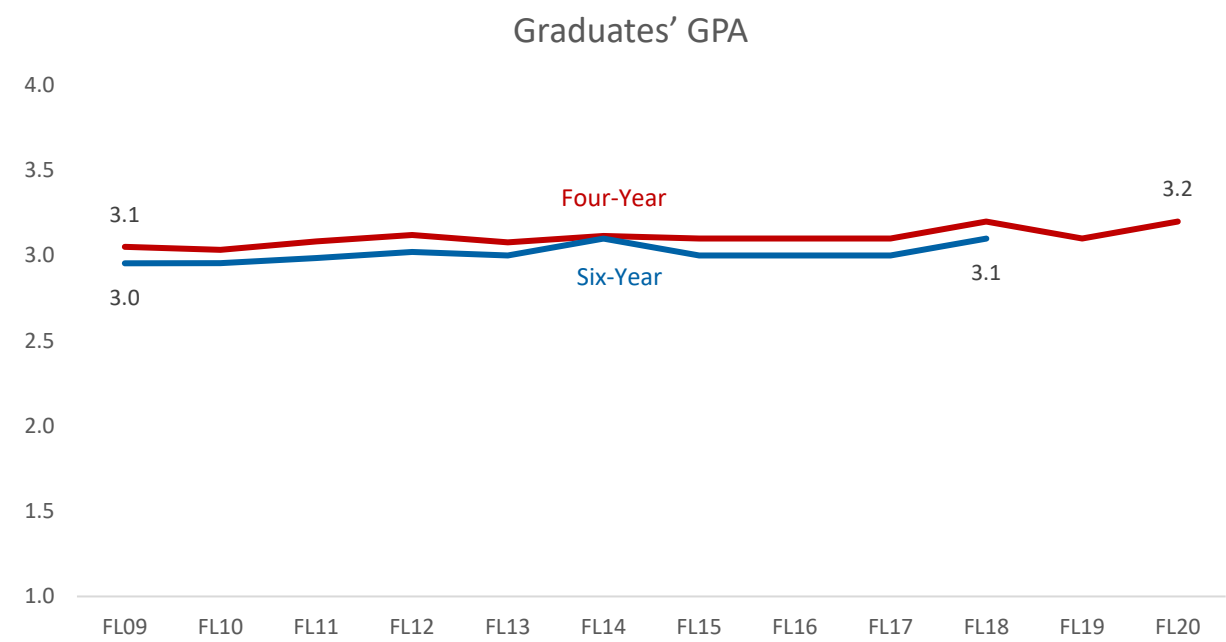
Cohort Year	FL11	FL12	FL13	FL14	FL15	FL16	FL17	FL18	FL19	FL20
STEM #	137	127	139	205	167	168	187	185	150	171
STEM %	48%	44%	49%	60%	61%	57%	62%	60%	53%	53%
Non-STEM #	147	163	142	138	108	125	116	124	131	149
Non-STEM %	52%	56%	51%	40%	39%	43%	38%	40%	47%	47%

Note:

1. The Psychology major offered both BA and BS degrees until the 2014-15 academic year, when it transitioned to offering only a BS degree and was reclassified as a STEM major.
2. The data on this page is based on the number of full-time, first-time cadets who graduated within four years.



Graduates' GPA



Graduates' GPA (Cohort-Based)												
	FL09	FL10	FL11	FL12	FL13	FL14	FL15	FL16	FL17	FL18	FL19	FL20
Four-Year	3.1	3.0	3.1	3.1	3.1	3.1	3.1	3.1	3.1	3.2	3.1	3.2
Six-Year	3.0	3.0	3.0	3.0	3.0	3.1	3.0	3.0	3.0	3.1		





UNDERREPRESENTED CADETS /PELL RECIPIENTS



SCHEV's Definition of URP

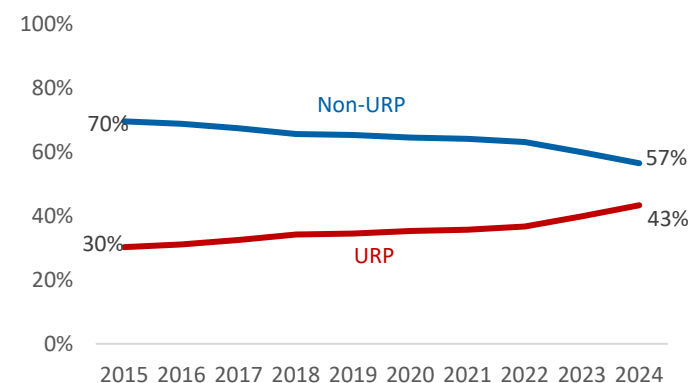
A URP cadet meets one or more of these criteria:

- Non-white US citizen and permanent residents.
- Degree-recipients receiving Pell grants at any time during the five years prior to degree award.
- Non-traditional students: age 25 or older at entry.
- Students from 34 Virginia localities with low associate and baccalaureate attainment rates (next slide).

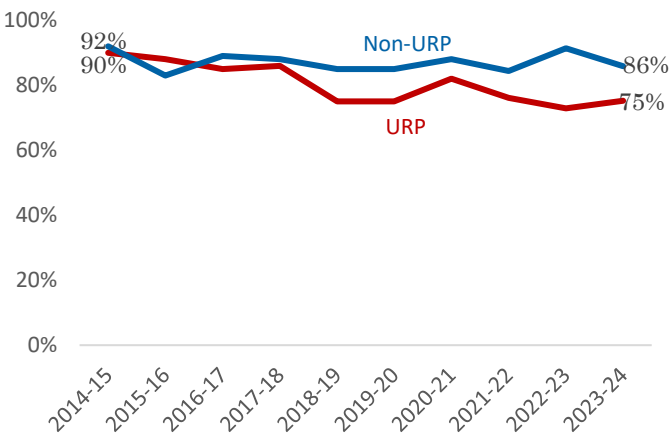


URP Enrollment and Outcomes

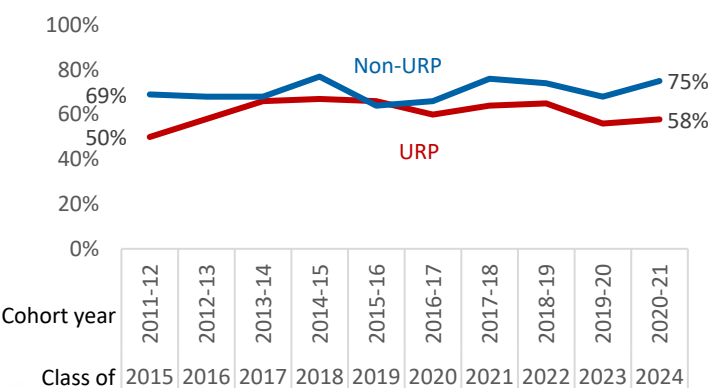
Underrepresented Cadet Enrollment Trends (Census Date)



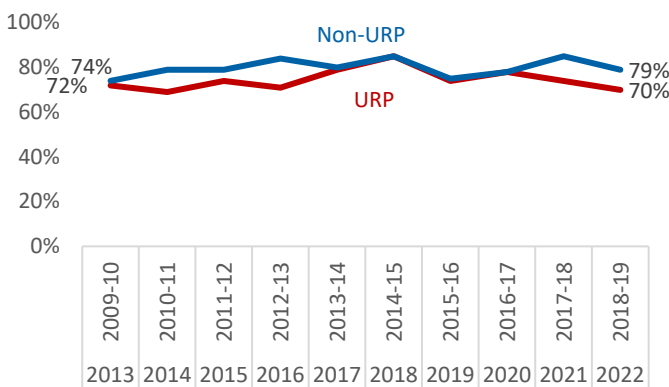
URP Retention Rates (FTF & Transfers)



URP Four-Year Grad Rates (FTF & Transfers)

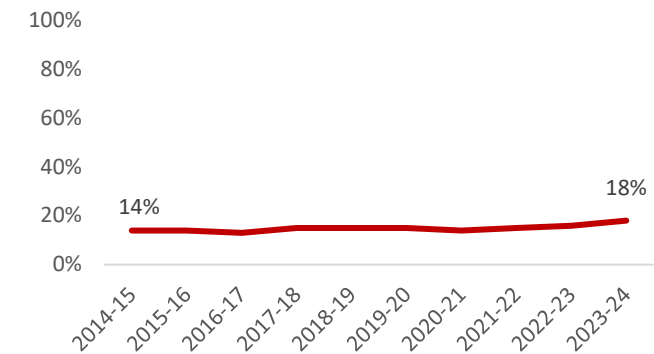


URP Six-Year Grad Rates (FTF & Transfers)

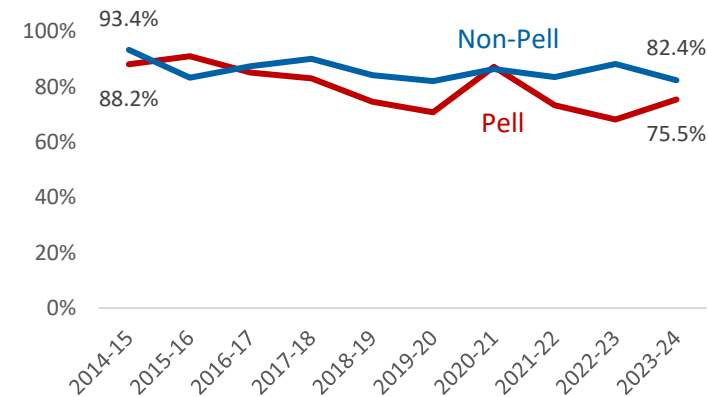


Pell Recipients and Outcomes

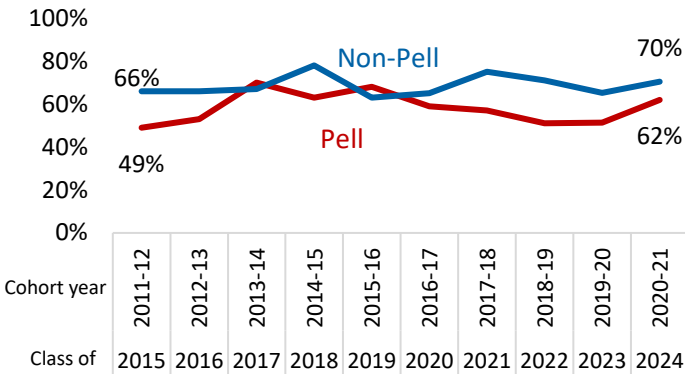
Pell Recipients



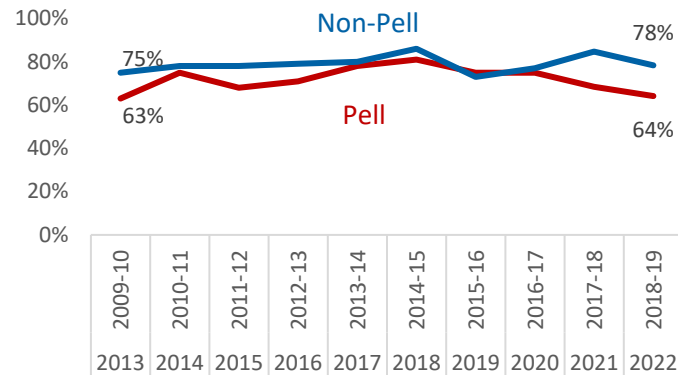
Pell Retention Rates



Pell Four-Year Grad Rates



Pell Six-Year Grad Rates



Notes:

1. Pell Recipients chart: Represents the percentage of total Pell recipients among all cadets as of the Census Date.
2. Retention and Graduation Rates: Charts reflect first-time, full-time cadets.
3. Retention Rates: Indicate the percentage of freshmen who return for their sophomore year.

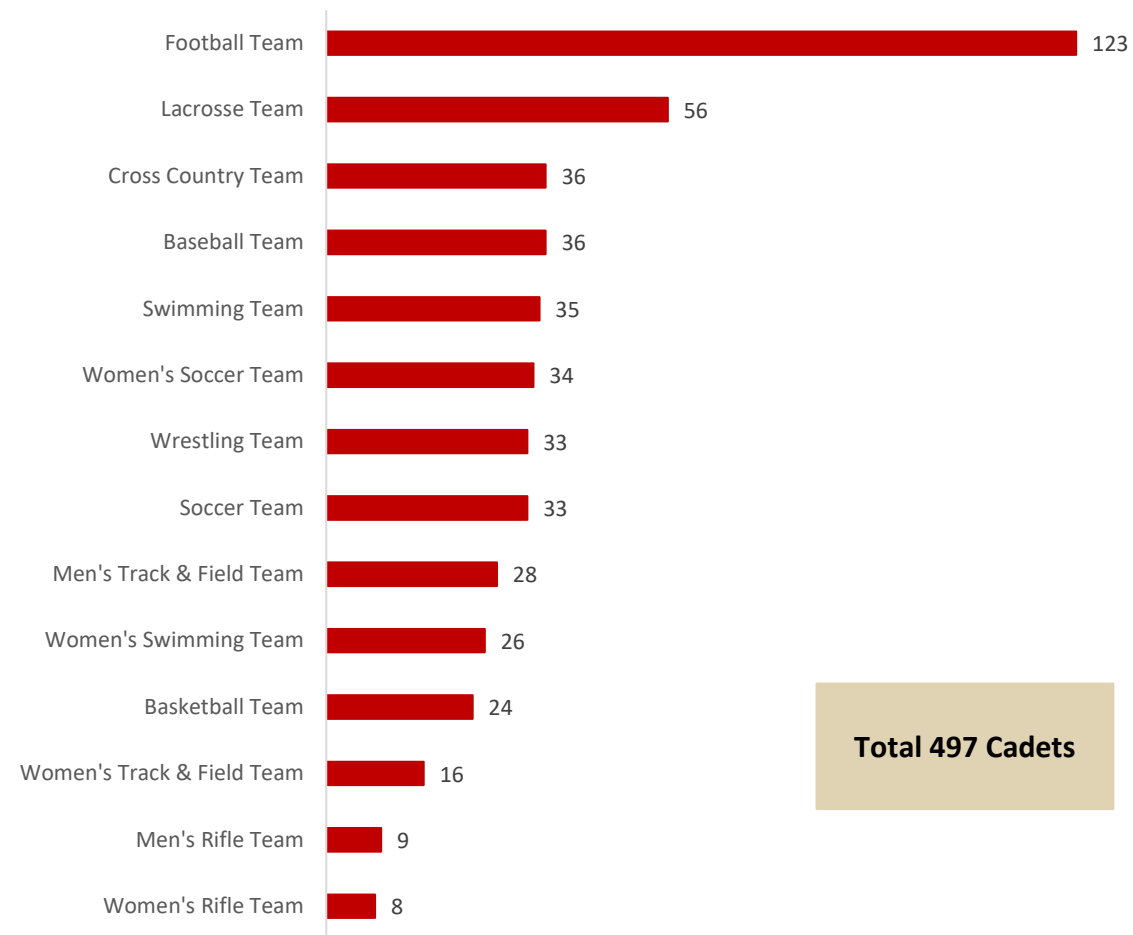




ATHLETICS



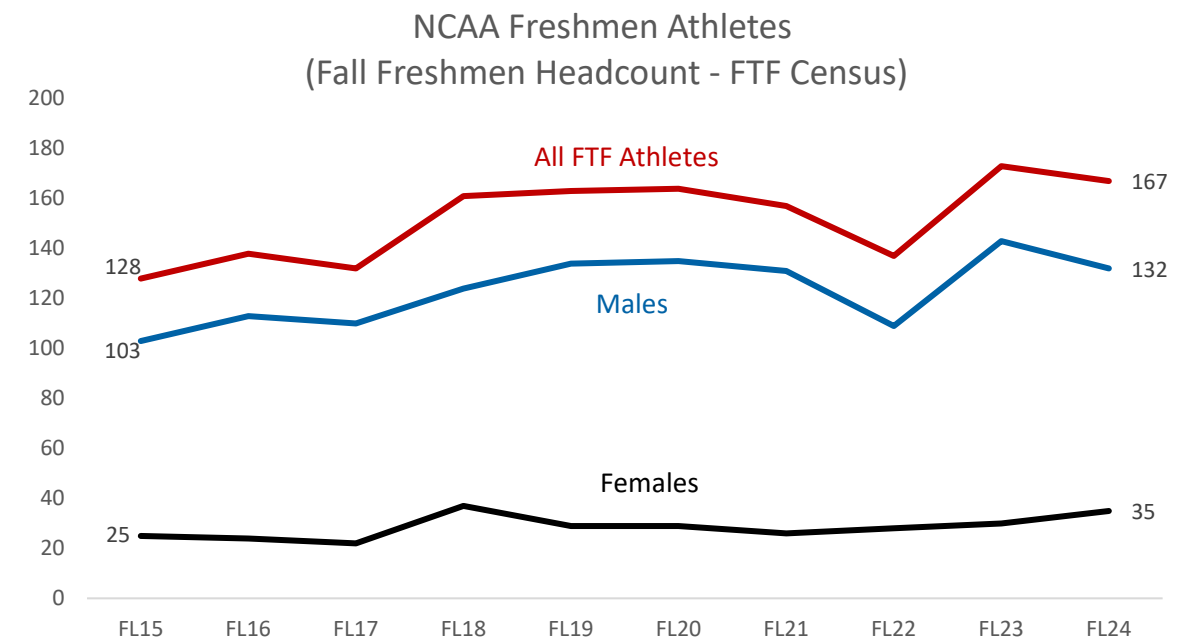
NCAA Teams



Notes:
NCAA Athletes: 497
Non-NCAA Athletes (not officially recognized as NCAA athletes): 20.
Data as of Census Day Headcount (Fall 2024)



Athlete Enrollment



	FL15	FL16	FL17	FL18	FL19	FL20	FL21	FL22	FL23	FL24
Female	25	24	22	37	29	29	26	28	30	35
Male	103	113	110	124	134	135	131	109	143	132
Athletes of Color	35	31	46	55	49	41	38	50	62	63
White	93	107	86	106	114	123	119	87	111	104

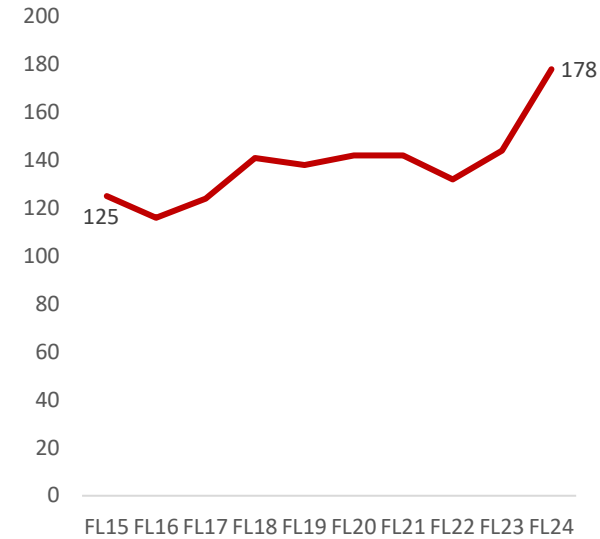


Athlete Enrollment

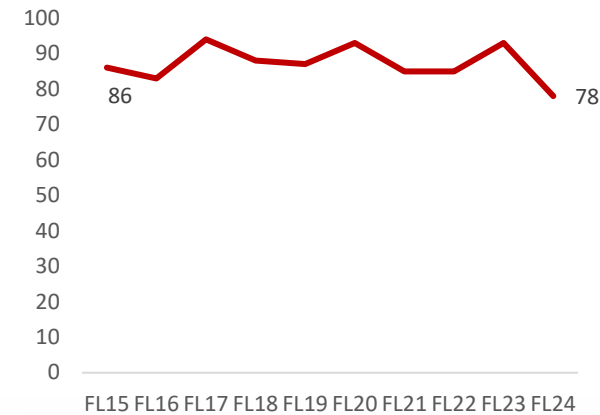
Term	Cadets of Color Athletes
FL15	125
FL16	116
FL17	124
FL18	141
FL19	138
FL20	142
FL21	142
FL22	132
FL23	144
FL24	178

Term	Cadets of Color Receiving Athletic Aid
FL15	86
FL16	83
FL17	94
FL18	88
FL19	87
FL20	93
FL21	85
FL22	85
FL23	93
FL24	78

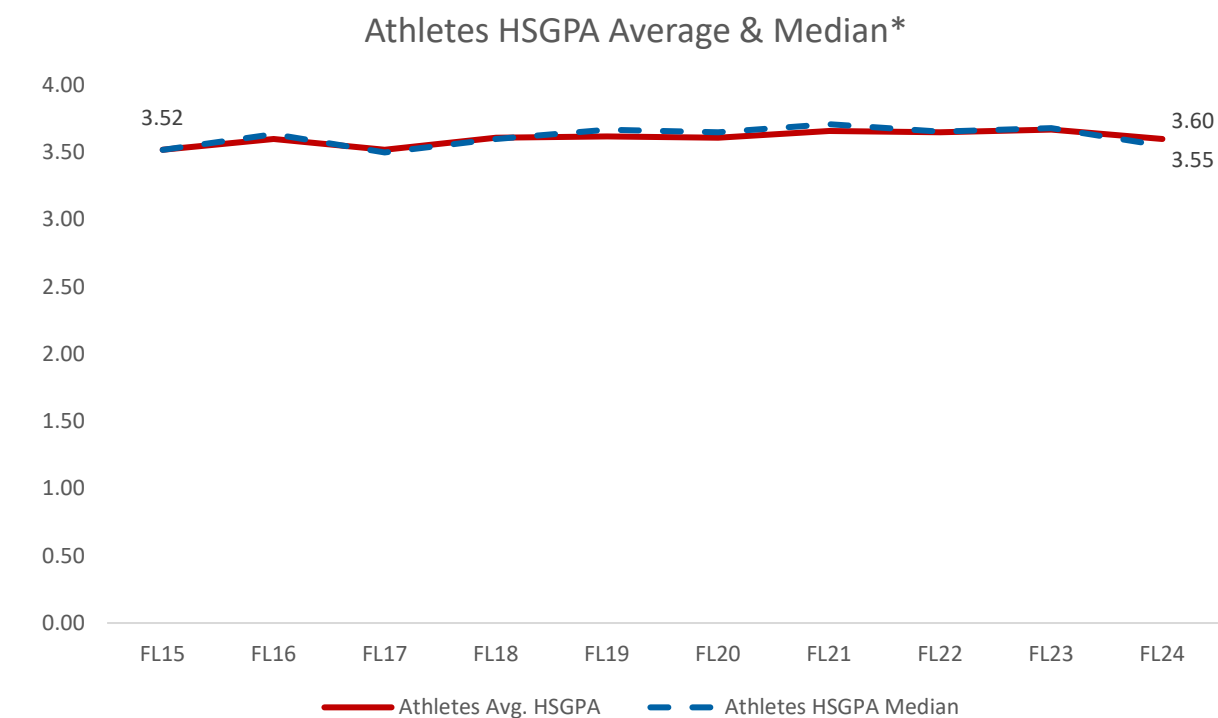
Cadets of Color Athletes



Cadets of Color Receiving Athletic Aid



Athlete High School GPA

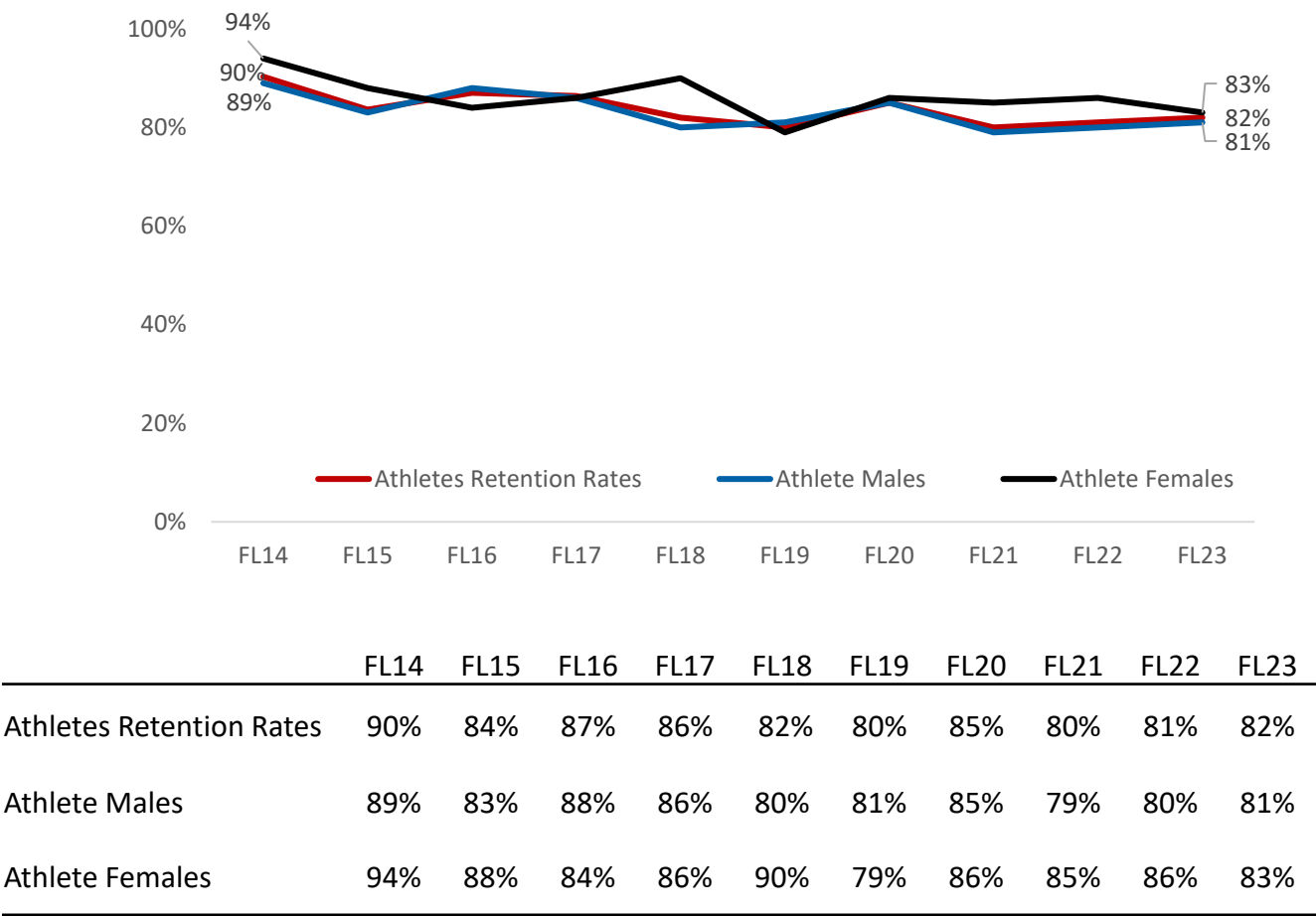


Notes:
1. HSGPA based on FTF matriculates at census date.
2. *Average is the mathematical mean of a group of numbers while the median is the middle number in a set of data. Large differences between the two could indicate skewness or the deviation and distribution of individual scores in relation to the mean.

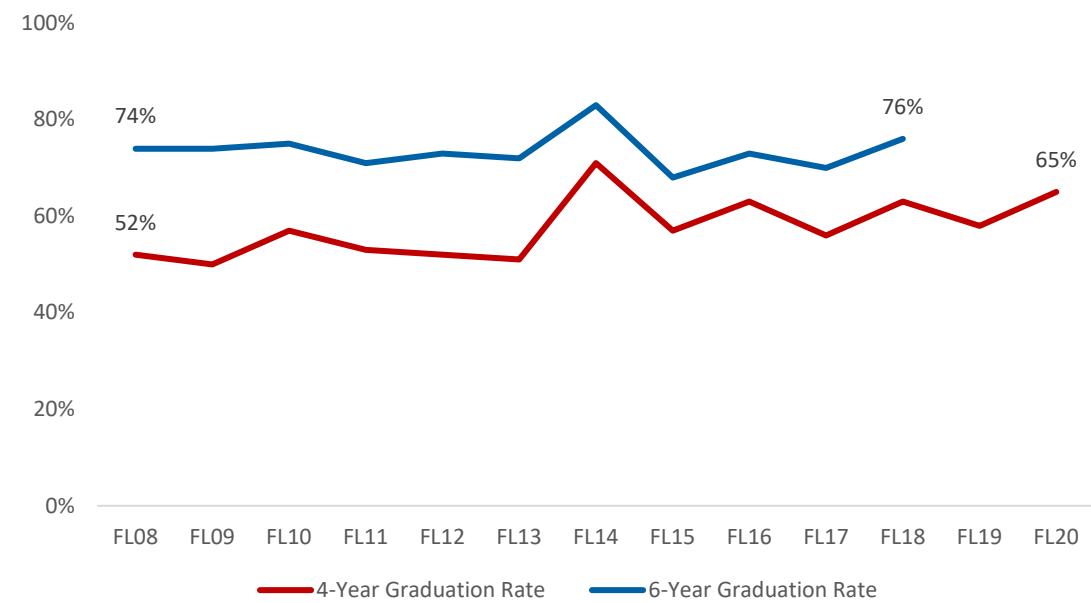
	FL15	FL16	FL17	FL18	FL19	FL20	FL21	FL22	FL23	FL24
Athletes Avg. HS GPA	3.52	3.6	3.52	3.61	3.62	3.61	3.66	3.65	3.67	3.60
Athletes HS GPA Median	3.52	3.64	3.50	3.60	3.67	3.65	3.71	3.66	3.68	3.55



Athlete Retention Rates



Athlete Graduation Rates



Four- & Six-Year Graduation Rates for Athletes by Cohort

	FL08	FL09	FL10	FL11	FL12	FL13	FL14	FL15	FL16	FL17	FL18	FL19	FL20
4-Year Graduation Rate	52%	50%	57%	53%	52%	51%	71%	57%	63%	56%	63%	58%	65%
6-Year Graduation Rate	74%	74%	75%	71%	73%	72%	83%	68%	73%	70%	76%		



Graduation Rates by Sport

Six-Year Graduation Rates:

Sport	FL09	FL10	FL11	FL12	FL13	FL14	FL15	FL16	FL17	FL18
Females										
Cross Country/Track	100%	75%	86%	43%	100%	79%	78%	100%	100%	92%
All Other Sports	67%	85%	78%	65%	79%	89%	75%	74%	71%	81%
Males										
Basketball	100%	33%	50%	60%	67%	67%	25%	43%	57%	67%
Football	81%	82%	66%	77%	77%	78%	74%	81%	54%	67%
Baseball	44%	90%	75%	80%	62%	86%	67%	60%	85%	77%
Cross Country/Track	83%	75%	60%	76%	59%	78%	44%	91%	64%	88%
All Other Sports	65%	69%	74%	76%	72%	88%	69%	69%	72%	71%





COMMISSIONING



Commissioning Profile, AY2024-25



Army Commissioning: 655
Army Non-Commissioning: 305
Total: 960



Navy Commissioning: 89
Navy Non-Commissioning: 50
Total: 139



Marine Commissioning: 90
Marine Non-Commissioning: 42
Total: 132

**1,438 cadets
participate in ROTC.**



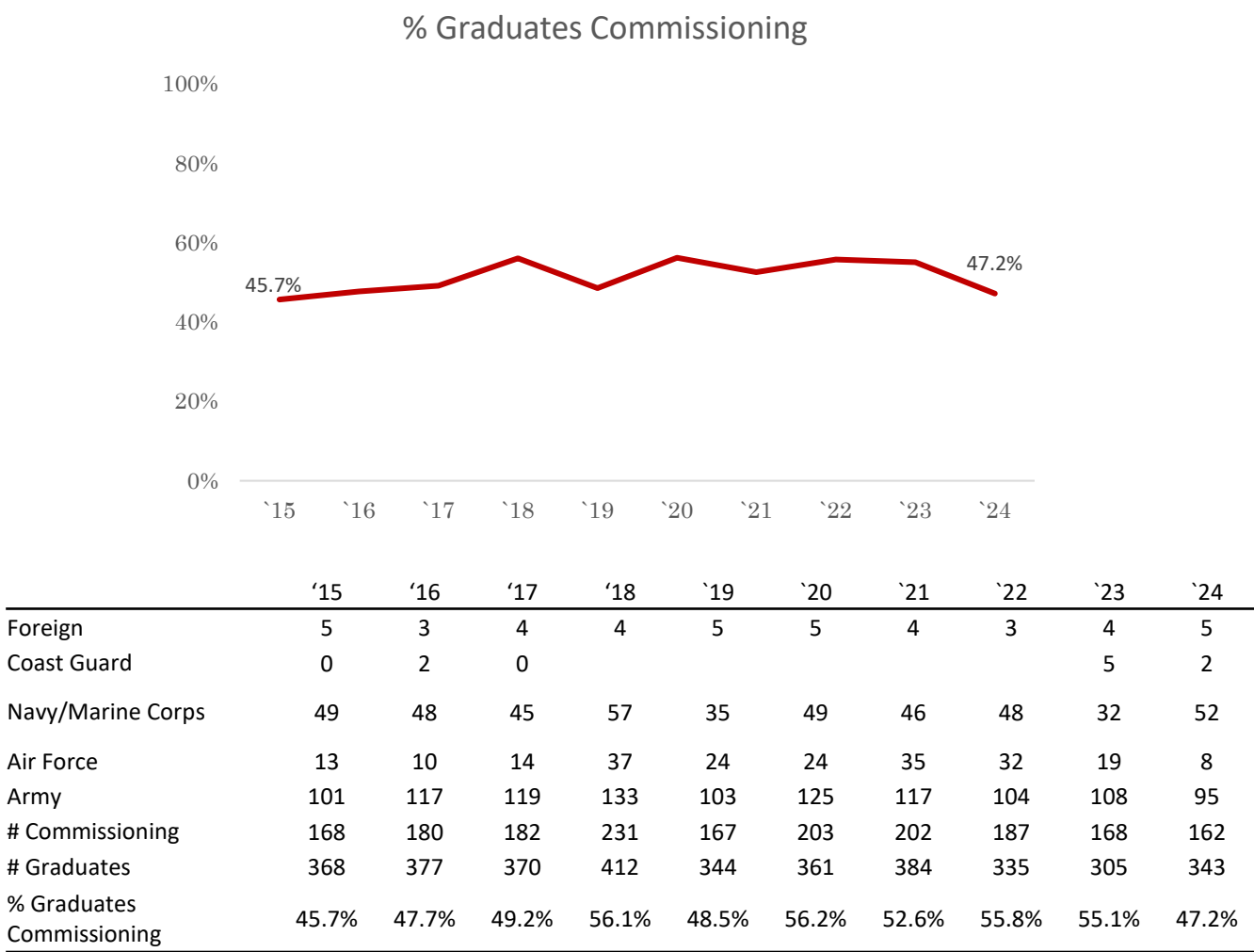
Air Force Commissioning: 170
Air Force Non-Commissioning: 0
Total: 170

Note:

1. Data was calculated as of February 2025.
2. The Census Day headcount for Spring 2025 is 1,440.



Commissioning



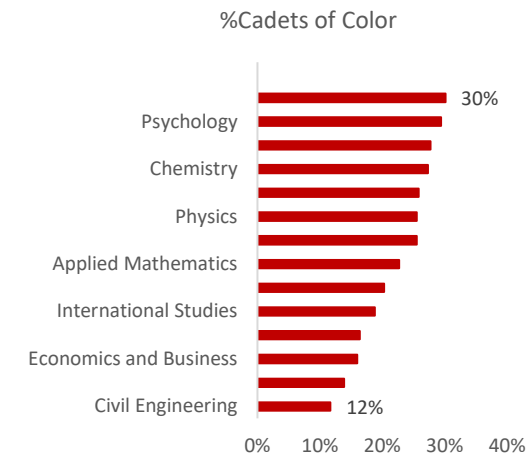
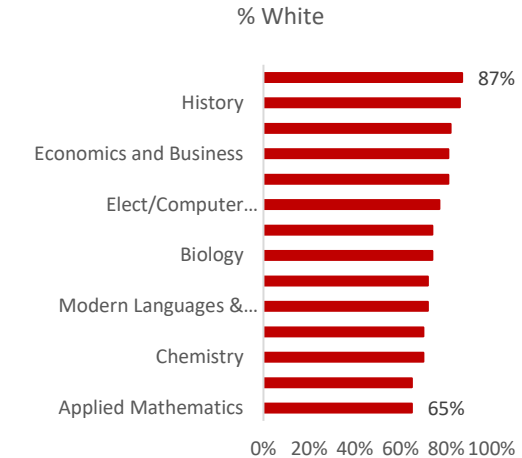


MAJORS, MINORS, & CONCENTRATIONS

Degrees Conferred, Sept. 2019 – May 2024

Degrees Conferred

Major	Cadets of Color	White	Non-Resident Alien & Unknown	% Cadets of Color	% White	% Non-Resident Alien & Unknown
Computer Science	34	74	5	30%	65%	4%
Psychology	57	136	1	29%	70%	1%
Modern Languages & Cultures	13	34		28%	72%	0%
Chemistry	9	23	1	27%	70%	3%
English	24	69		26%	74%	0%
Physics	12	34	1	26%	72%	2%
Biology	41	119	1	25%	74%	1%
Applied Mathematics	15	43	8	23%	65%	12%
Elect/Computer Engineering	14	53	2	20%	77%	3%
International Studies	48	206	1	19%	81%	0%
Mechanical Engineering	24	119	3	16%	82%	2%
Economics and Business	38	192	7	16%	81%	3%
History	27	166	1	14%	86%	1%
Civil Engineering	28	208	4	12%	87%	2%



Degrees Conferred by Major

Major		2014-15	2015-16	2016-17	2017-18	2018-19	2019-20	2020-21	2021-22	2022-23	2023-24	Grand Total
Applied Mathematics		10	6	14	23	11	16	12	14	6	18	130
Biology		40	28	40	39	34	38	36	30	27	30	342
Chemistry		9	10	12	13	7	7	6	9	7	4	84
Civil Engineering		56	70	61	59	53	50	51	57	42	40	539
Computer Science	Computer Science (CS)	11	6	16	22	27	20	25	24	18	22	191
	Cybersecurity Track (CYS)										2	2
	Information Technology Track (CIT)										1	1
	Theory and Application Track (CST)										1	1
Economics and Business		54	58	68	56	48	50	48	43	50	46	521
Elect/Computer Engineering		13	7	7	14	17	12	18	17	11	11	127
English		12	15	12	20	7	10	21	22	17	23	159
History		41	36	30	29	24	41	33	33	43	44	354
International Studies		46	65	57	62	53	48	55	42	55	55	538
Mechanical Engineering		19	28	23	38	20	23	41	30	19	33	274
Modern Languages & Cultures		12	12	5	11	11	7	7	17	7	9	98
Physics		9	7	7	12	14	11	10	7	11	8	96
Psychology		44	26	29	29	25	39	39	39	34	43	347
Grand Total		376	374	381	427	351	372	402	384	347	390	3804

Degrees Conferred by Primary Major



Academic Minors/Concentrations by Graduates

Minors/Concentrations	2014-15	2015-16	2016-17	2017-18	2018-19	2019-20	2020-21	2021-22	2022-23	2023-24	Grand Total
Arabic Minor	1	6	4	5	4	1	7	4	2	1	35
Art Hist. & Visual Cult. Minor	2	1	2	1	2	4	1	1			14
Asian Studies Minor		4	6	6	6	3	5	9	3	3	45
Astronomy Minor	4		1	4	5	3	1	2	7	2	29
Business Minor	3	4	1	3	1		1	4		2	19
Chemistry Minor	6	1	4	5	4	3	3	4	4	2	36
Chinese Minor			1	5		2	8	2	1	2	21
CIS Computing Track		6	3	5	8	6	5	1			34
CIS Informatics Track			11	17	19	14	19	1			81
Computer & Info Sciences Minor	1		2	2	1	1		1		2	10
Computer Eng. Minor	2	1		2			1		1	1	8
Conc.-Aerospace Engineering	4	7	2	3	2	5	13	6	2	5	49
Conc-Art Hist. & Visual Cult.	1	1	4	4		2	4	5	2	5	28
Conc-Biochem & Mol. Biology	5	7	8	4	2	3		1			30
Conc-ECOS	6	3	5	2	2	4	2	1			25
Conc-Fin Management	6	9	8	10	8	5	1	2			49
Conc-Financial Analysis							1	4	4	3	12
Conc-Global Management	4	5	8	11	11	7	4	2	1		53
Conc-Global Business								2	2	2	6
Conc-Literary Studies	1	12	10	13	6	8	15	15	14	16	110
Conc-Military History	12	7	9	11	10	18	4	5	11	3	90
Conc-Nuclear Engineering	7	11	7	11	13	2	13	9	9	6	88
Conc-Philosophy	2	4	3	5	1	5	7	8	6	10	51
Conc-Rhetoric & Writing	2	10	10	15	8	8	16	15	16	18	118
Conc-Writing	5	1									6
Cybersecurity Minor					2	3		3	4	6	18

Note: Some graduates have multiple minors.



Academic Minors/Concentrations by Graduates, Cont.

Minors/Concentrations	2014-15	2015-16	2016-17	2017-18	2018-19	2019-20	2020-21	2021-22	2022-23	2023-24	Grand Total
Decision Analytics Conc										5	5
Economics Minor	5	3	3	2	1	3	3	3		3	26
English Minor	5										5
Exercise Science Minor	9	5	13	6	6	12	7	10	10	6	84
French Minor		6	4	4	1			3	4	7	29
German Minor	7	8	4		1	3	1	2	4		30
History Minor	8	5	9	8	6	4	2	3	3	7	55
Int'l Studies Minor	1	2	6	4	3	9	3	5	5	5	43
Japanese Minor	3	1									4
Leadership Studies Minor	4	2	8	5	3	10	3	9	5	7	56
Literary Studies Minor	2	2	2	5	2	9	1	10	3	4	40
Mathematics Minor	38	33	32	42	41	28	40	32	29	42	357
MC Minor-Arabic & French	1										1
Middle Eastern Studies Minor		5	3	3	3	1	1		1	2	19
Military History Minor		3		2				4		1	10
National Security Minor	5	10	6	9	10	9	9	8	10	11	87
Nuclear Concentration										6	6
Nuclear Eng.				1	1	1				3	6
Philosophy Minor	6	2	2	5	5	5	1	3		6	35
Physics Minor	7	8	4	13	8	6	15	18	14	15	108
Psychology Minor	5	4	4	7	5	4	3	7	3	2	44
Rhetoric and Writing Minor		3	3	2	8	11		3	2	3	35
Spanish & French Minor		1									1
Spanish Minor	10	15	6	21	8	12	8	12	8	5	105
Track-Chem Biochem/Pre-Med		3	5	4	3	3	1	3	3	2	27
Track-Chemistry Research				9	4	4	4	6	4	2	33
Writing Minor	2										2
Grand Total	192	221	223	296	234	241	233	248	197	233	2318

Note: Some graduates have multiple minors.





ACADEMIC HONORS



Honors Program

Academic Honors Program (2024-25)	Participants
Applied Mathematics	3
Biology	9
Civil Engineering	6
Chemistry	2
Computer & Information Sciences	7
Economics & Business	9
Electrical Engineering	10
English	7
History	9
International Studies	25
Mechanical Engineering	11
Modern Languages & Cultures	3
Physics	2
Psychology	5
Total	108





STUDY ABROAD



Study Abroad

Spring 2024	# Participants	Summer 2024	# Participants
Austria	1	Ireland	11
Germany	1	Germany	1
Iceland	1	Morocco	6
Italy	12	Poland	21
Japan	1	Italy	18
Lithuania	1	Spain	22
Serbia	2	Taiwan	5
Spain	3	United Kingdom	8
Turkey	8		
Total	31		92





UNDERGRADUATE RESEARCH



Undergraduate Research

VMI Center for Undergraduate Research

- VCUR supported travel for 46 cadets to either conduct undergraduate research in the field or present their research at external conferences.
- VCUR supported purchase of research supplies for 10 cadets.

Department	SURI '24 Funded
Applied Mathematics	4
Biology	8
Civil Engineering	1
Chemistry	1
Computer Information Science	3
Economics & Business	0
Electrical & Computer Engineering	2
English	1
History	2
Human Perf/Wellness	1
International Studies	3
Mechanical Engineering	2
Modern Languages & Cultures	0
Psychology	2
Physics	0
non-VMI	0
Total	30





TUITION & FEES



Tuition and Fees

2024-2025

Tuition and Fees	Virginians	Non-Virginians	International
Tuition	\$10,368	\$41,960	\$41,960
Housing (Room)	\$3,386	\$3,386	\$3,386
Food (Board)	\$7,924	\$7,924	\$7,924
Auxiliary Fees			
Medical	\$592	\$592	\$592
Athletic	\$4,064	\$4,064	\$4,064
Cadet Facilities/Activities	\$2,526	\$2,526	\$2,526
Total Tuition and Fees	\$28,860	\$60,452	\$60,452
Quartermaster Charge			
Laundry / Pressing	\$484	\$484	\$484
Haircuts	\$334	\$334	\$334
Uniforms / UMA Activities	\$2,678	\$2,678	\$2,678
Total (Tuition, Fees, Quartermaster Charge)	\$32,356	\$63,948	\$63,948
Health Insurance (International Cadets Only)			\$1, 250*
Total Cost of Attendance	\$32,356	\$63,948	\$65,198



Tuition and Fees

Explanation of Fees

Housing and Food (Room and Board)

Housing and Food are required since all cadets live in barracks and are provided 21 meals per week.

Auxiliary Fees

Costs of medical services, cadet facilities, and activities.

Quartermaster Charges

Covers haircuts and uniforms. Uniforms are state property and must be returned to the Institute. Qualified cadets enrolled or under contract in the ROTC program receive a uniform allowance directly from the federal government which helps defray the cost of cadet uniforms.

Deposit

The Deposit covers property damages, lost property, and unpaid obligations to VMI. The deposit shall equal \$300 and be paid by all incoming and returning cadets. VMI returns this deposit, less any deductions for damages or unpaid obligations and without interest, upon graduation of the cadet or the termination of the cadetship.

Health Insurance

Health Insurance is a required fee for all International cadets. The amount included is an estimate for the 2024-25 academic year. Please contact the Office of International Programs for specific coverage information.

Direct Costs

Direct Costs include VMI billable expenses. Tuition, fees, housing, and food are VMI's Direct Costs.

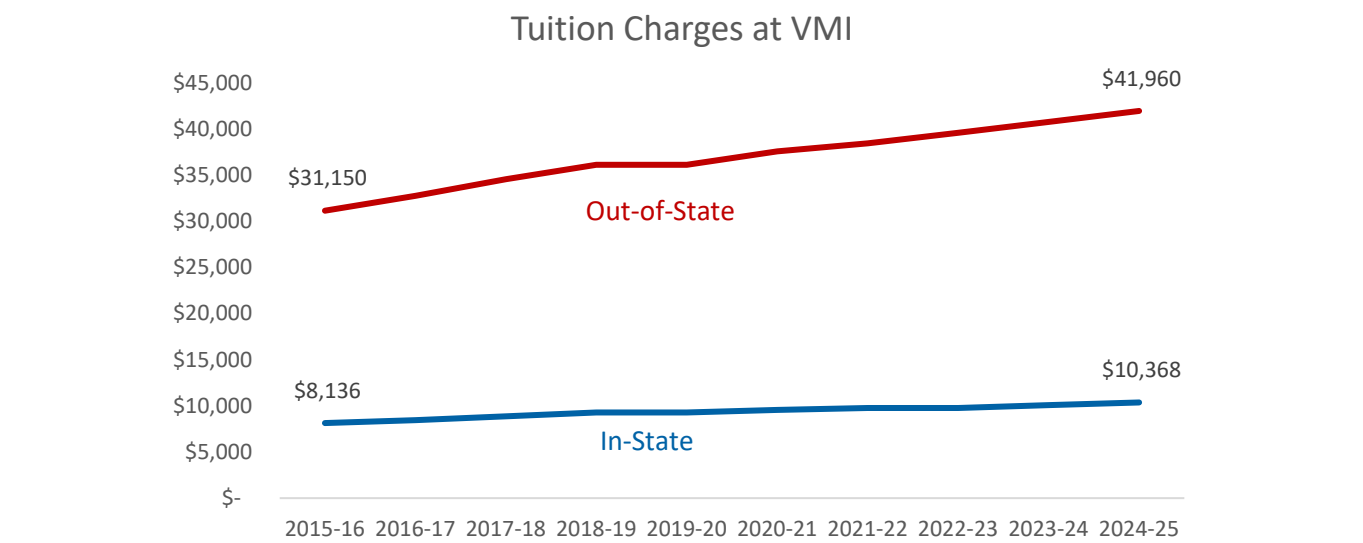
Indirect Costs for 2024-25

In-state cadets should plan on \$3,350 in Indirect Costs. Indirect Costs include other expenses you may incur, including approximately: \$1,200 books, source materials, supplies and equipment; \$1,700 personal expenses (potential loan origination fees); and \$450 transportation.

Out of state cadets should plan on an estimated \$4,300 in Indirect Costs. Indirect Costs include other expenses you may incur, including approximately: \$1,200 books, source materials, supplies and equipment; \$1,700 personal expenses (potential loan origination fees); and \$1,400 transportation.



Tuition and Fees



In-State					Out-of-State				
	Tuition	Mandatory Non-E&G	Average Room & Board	Total		Tuition	Mandatory Non-E&G	Average Room & Board	Total
2015-16	\$8,136	\$8,400	\$8,666	\$25,202	2015-16	\$31,150	\$8,400	\$8,666	\$48,216
2016-17	\$8,461	\$9,031	\$8,968	\$26,460	2016-17	\$32,770	\$9,031	\$8,968	\$50,769
2017-18	\$8,884	\$9,330	\$9,236	\$27,450	2017-18	\$34,572	\$9,330	\$9,236	\$53,138
2018-19	\$9,284	\$9,578	\$9,482	\$28,344	2018-19	\$36,128	\$9,578	\$9,482	\$55,188
2019-20	\$9,284	\$9,834	\$9,766	\$28,884	2019-20	\$36,128	\$9,834	\$9,766	\$55,728
2020-21	\$9,562	\$9,648	\$10,060	\$29,270	2020-21	\$37,572	\$9,648	\$10,060	\$57,280
2021-22	\$9,782	\$9,888	\$10,362	\$30,032	2021-22	\$38,436	\$9,888	\$10,362	\$58,686
2022-23	\$9,782	\$10,132	\$10,674	\$30,588	2022-23	\$39,590	\$10,132	\$10,674	\$60,396
2023-24	\$10,076	\$10,408	\$10,990	\$31,474	2023-24	\$40,778	\$10,408	\$10,990	\$62,176
2024-25	\$10,368	\$10,678	\$11,310	\$32,356	2024-25	\$41,960	\$10,678	\$11,310	\$63,948





FINANCIAL AID



Financial Aid

In 2023-24, over 86% of the Corps of Cadets receives some form of financial aid (Federal Loans, ROTC, Athletics, Merit, need-based aid, etc.).

About 55% of cadets received need-based financial aid.

About 29% of cadets received ROTC Scholarships.

VMI strives to provide financial assistance to meet 100% of federally (FAFSA) determined need for Virginia cadets (including loans) and 60% of determined need for non-Virginia cadets (including loans).

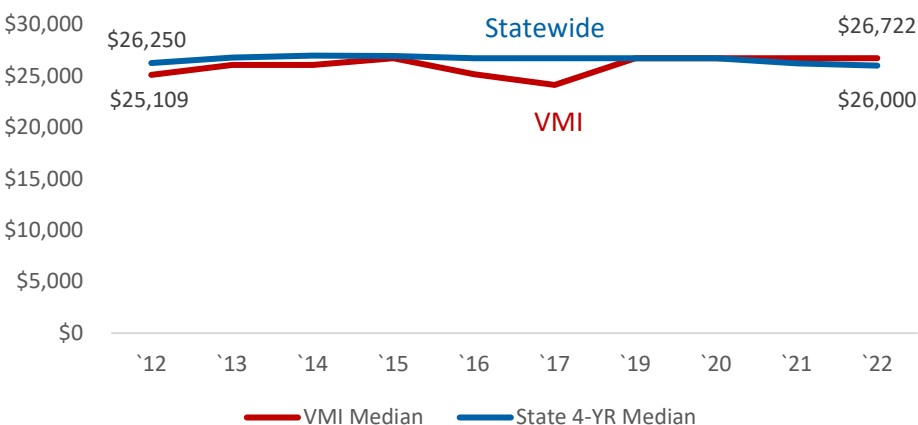
Annually, VMI provides from its own resources, primarily from the Alumni Agencies, over 16.85 million dollars in cadet scholarship assistance, broken down as follows:

Need-based	\$8.24 million
Athletics	\$5.87 million
Non-need-based to include merit	\$2.74 million



Financial Aid

Median Debt at Graduation
VMI vs. VA Four-Year Schools



Known Debt at Graduation of VMI Borrowers

Year	# Borrowers	% of grads	25th Percentile	75th Percentile	VMI Median	VA Median
2012-13	199	55%	\$13,934	\$29,280	\$25,109	\$26,250
2013-14	220	59%	\$17,122	\$27,232	\$26,080	\$26,792
2014-15	217	58%	\$15,126	\$29,756	\$26,058	\$26,974
2015-16	221	59%	\$19,302	\$30,712	\$26,718	\$26,929
2016-17	229	60%	\$14,842	\$29,720	\$25,169	\$26,720
2017-18	271	63%	\$14,599	\$28,695	\$25,000	\$26,720
2018-19	204	58%	\$18,230	\$33,720	\$26,719	\$26,716
2019-20	217	58%	\$15,756	\$32,722	\$26,718	\$26,718
2020-21	264	66%	\$16,569	\$36,623	\$26,720	\$26,232
2021-22	228	59%	\$17,368	\$46,724	\$26,722	\$26,000

Source: SCHEV EOM06





FINANCIALS



VMI Total Revenue

	2024	2025	Increase (Decrease)	%
STATE FUNDS				
Educational and General				
General Funds	\$21,730,000	\$25,337,500	\$3,607,500	16.6%
Cadet Tuition and Other Income	29,795,000	30,495,000	700,000	2.3%
Transfer from/(to) Reserves	1,076,000	-	(1,076,000)	
Total Educational & General	52,601,000	55,832,500	3,231,500	6.1%
Unique Military Activities				
General Funds	5,860,000	5,860,000	-	0.0%
Cadet Fees and Other Income	3,714,000	3,939,000	225,000	6.1%
Transfer from/(to) Reserves	1,060,000	977,000	(83,000)	
Total Unique Military	10,634,000	10,776,000	142,000	1.3%
Auxiliary Enterprises				
Cadet Fees and Other Income	22,248,000	23,328,000	1,080,000	4.9%
Transfer from/(to) Reserves	1,746,000	309,000	(1,437,000)	-82.3%
Total Auxiliary	23,994,000	23,637,000	(357,000)	-1.5%
Cadet Financial Assistance				
General Funds	1,418,000	1,543,000	125,000	8.8%
Cadet Tuition and Fees	2,300,000	3,500,000	1,200,000	52.2%
Total Cadet Financial Assistance	3,718,000	5,043,000	1,325,000	35.6%
Total State Funds	\$90,947,000	\$95,288,500	\$4,341,500	4.8%



VMI Total Revenue, Cont.

	2024	2025	Increase (Decrease)	%
LOCAL FUNDS				
Restricted Funds				
VMI Foundation/Agencies Bd	\$20,491,000	\$23,676,000	\$3,185,000	15.5%
VMI Keydet Club	6,212,000	6,614,000	402,000	6.5%
VMI Endowment	647,000	679,000	32,000	4.9%
Federal Funds/NCAA Income	1,851,000	2,227,000	376,000	20.3%
Total Restricted	29,201,000	33,196,000	3,995,000	13.7%
Unrestricted Funds				
VMI Foundation/Agencies Bd	3,250,000	3,250,000	-	0.0%
VMI Keydet Club	200,000	350,000	150,000	
VMI Endowment Income	79,000	84,000	5,000	6.3%
Cadet Athletic Fees	5,652,000	5,940,000	288,000	5.1%
Athletic Revenue/Support	1,144,000	1,288,000	144,000	12.6%
Athletic Reserve	1,715,000	-	(1,715,000)	-100.0%
Auxiliary Subsidy to Athletics	-	1,023,000	1,023,000	100.0%
Museum Revenue	584,000	581,000	(3,000)	-0.5%
Conference Income	188,000	189,000	1,000	0.5%
Concessions Income	476,000	443,000	(33,000)	-6.9%
Total Unrestricted	13,288,000	13,148,000	(140,000)	-1.1%
Total Local Funds	42,489,000	46,344,000	3,855,000	9.1%
TOTAL ALL FUNDS	133,436,000	141,632,500	8,196,500	6.1%
Less: Cadet Financial Assistance	(18,919,000)	(22,565,000)	(3,646,000)	19.3%
TOTAL REVENUE	\$114,517,000	\$119,067,500	\$4,550,500	4.0%



VMI Source of Revenue

	2024	% of Total	2025	% of Total	Inc (Dec)	% Inc (Dec)
State General Funds	\$29,008,000	25.3	\$32,740,500	27.5	\$3,732,500	12.9%
Cadet Tuition/Fees and Sales	44,790,000	39.1	44,637,000	37.5	(153,000)	-0.3%
VMI and Alumni Agencies Support						
<i>VMI Alumni Agencies</i>						
VMI Foundation	22,517,000	19.7	25,639,000	21.5	3,122,000	13.9%
VMI Alumni Agencies Board	1,224,000	1.1	1,287,000	1.1	63,000	5.1%
Total Foundation/ Agencies Bd	23,741,000	20.7	26,926,000	22.6	3,185,000	13.4%
VMI Keydet Club	6,412,000	5.6	6,964,000	5.8	552,000	8.6%
Total Alumni Agencies	30,153,000	26.3	33,890,000	28.5	3,737,000	12.4%
<i>VMI Endowment</i>						
VMI General Endowment	468,000	0.4	489,000	0.4	21,000	4.5%
VMI Collins Endowment	173,000	0.2	189,000	0.2	16,000	9.2%
Outside Trusts (scholarships)	85,000	0.1	85,000	0.1	-	0.0%
Total VMI Endowment	726,000	0.6	763,000	0.6	37,000	5.1%
Total VMI and Alumni Agencies	\$30,879,000	27.0	\$34,653,000	29.1	\$3,774,000	12.2%



VMI Source of Revenue, Cont.

	2024	% of Total	2025	% of Total	Inc (Dec)	% Inc (Dec)
Other Revenue						
Athletic Revenue/Support	\$1,144,000	1.0	\$1,288,000	1.1	\$144,000	12.6%
Athletic Reserve	1,715,000		-	0.0	(1,715,000)	-100.0%
Auiliary Subsidy to Athletics	-		1,023,000	0.9	1,023,000	100.0%
Concessions Income	476,000	0.4	443,000	0.4	(33,000)	-6.9%
Museum Revenue	584,000	0.5	581,000	0.5	(3,000)	-0.5%
Program/Conference Income	188,000	0.2	189,000	0.2	1,000	0.5%
E&G Reserve	1,076,000	-	-	0.0	(1,076,000)	
UMA Reserve	1,060,000	-	977,000	0.8	(83,000)	
Auxiliary Reserves	1,746,000	1.5	309,000	0.3	(1,437,000)	-82.3%
Local Unrestricted Fund Balance	-	-	-	0.0	-	
Federal Funds/Other Income	1,851,000	1.6	2,227,000	1.9	376,000	20.3%
Total Other Revenue	9,840,000	8.6	7,037,000	5.9	(2,803,000)	-28.5%
TOTAL	\$114,517,000	100.0	\$ 119,067,500	100.0	\$4,550,500	4.0%



VMI Expenditures

	2024	2025	Increase (Decrease)	%
STATE FUNDS				
Educational & General				
Instruction	\$24,681,000	\$25,525,000	\$844,000	3.4%
Public Service	133,000	138,000	5,000	3.8%
Academic Support	7,628,000	7,652,000	24,000	0.3%
Cadet Services	4,422,000	5,543,000	1,121,000	25.4%
Institutional Support	6,793,000	7,374,000	581,000	8.6%
Physical Plant	8,944,000	9,600,500	656,500	7.3%
Total Educational & General	52,601,000	55,832,500	3,231,500	6.1%
Unique Military Activities	10,634,000	10,776,000	142,000	1.3%
Auxiliary Enterprises				
Operations	21,013,000	20,250,000	(763,000)	-3.6%
Debt Service	2,481,000	2,470,000	(11,000)	-0.4%
Maintenance projects	500,000	917,000	417,000	83.4%
Total Auxiliary Enterprises	23,994,000	23,637,000	(357,000)	-1.5%
Cadet Financial Assistance	3,718,000	5,043,000	1,325,000	35.6%
Total State Funds	\$90,947,000	\$95,288,500	\$4,341,500	4.8%



VMI Expenditures, Cont.

	2024	2025	Increase (Decrease)	%
LOCAL FUNDS				
Educational & General				
Instruction	\$8,964,000	\$9,837,000	\$873,000	9.7%
Research	48,000	53,000	5,000	10.4%
Public Service	1,409,000	1,457,000	48,000	3.4%
Academic Support	2,387,000	2,485,000	98,000	4.1%
Cadet Services	1,403,000	1,467,000	64,000	4.6%
Institutional Support	2,774,000	3,016,000	242,000	8.7%
Physical Plant	208,000	303,000	95,000	45.7%
Total Educational & General	17,193,000	18,618,000	1,425,000	8.3%
Cadet Financial Assistance	15,201,000	17,522,000	2,321,000	15.3%
Auxiliary Enterprises				
Intercollegiate Athletics	10,095,000	10,204,000	109,000	1.1%
Debt Service	-	-	-	
Total Auxiliary Enterprises	10,095,000	10,204,000	109,000	1.1%
Total Local Funds	42,489,000	46,344,000	3,855,000	9.1%
TOTAL ALL FUNDS	133,436,000	141,632,500	8,196,500	6.1%
Less: Cadet Financial Assistance	(18,919,000)	(22,565,000)	(3,646,000)	19.3%
TOTAL EXPENDITURES	\$114,517,000	\$119,067,500	\$4,550,500	4.0%

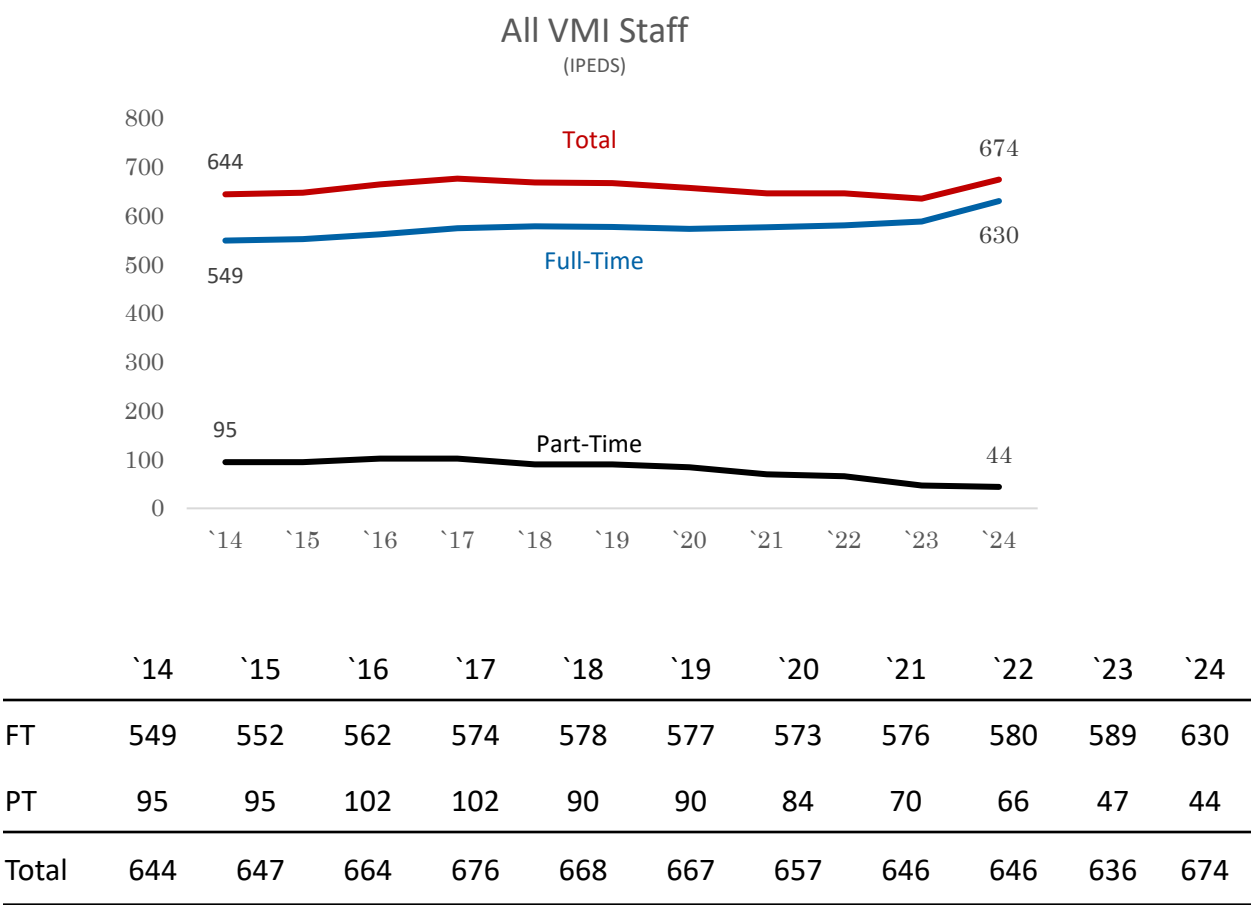




VMI EMPLOYEES



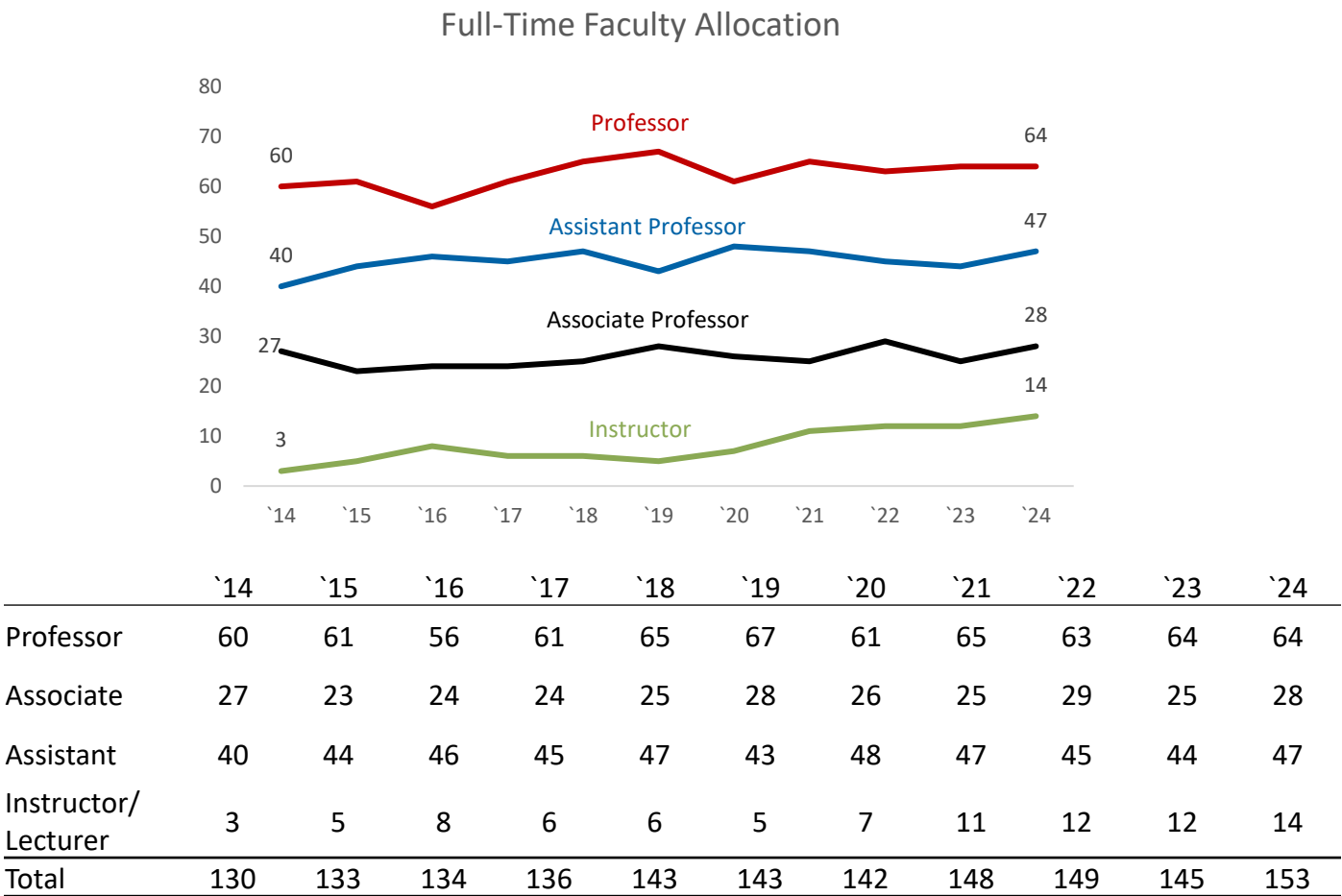
VMI Employees



Note:
1. Data Source: IPEDS Human Resources (HR) Survey.
2. The IPEDS HR Survey data is updated annually each April.
3. There was an increase in retirements among full-time and part-time teaching faculty in 2023.



VMI Full-Time Instructional Faculty



Notes:
1. Data Source: IPEDS Human Resources (HR) Survey
2. The IPEDS HR Survey data is updated annually each April.
3. There was an increase in retirements among full-time teaching faculty in 2023.



VMI Instructional Faculty by Race and Gender

Ethnic and Race	Full-Time		Part-Time		Total
	Male	Female	Male	Female	
U.S. Nonresident	1	0	0	0	1
Hispanic/Latino	0	1	1	0	2
Asian	10	6	0	1	17
Black or African American	4	0	1	1	6
Native Hawaiian or Other Pacific Islander	1	0	0	0	1
White	85	44	22	13	164
Race and ethnicity unknown	1	0	0	0	1
Grand Total	102	51	24	15	192

Notes:

1. Data Source: IPEDS Human Resources (HR) Survey 2024–25 (data as of November 1, 2024)
2. The IPEDS HR Survey data is updated annually each April.



VMI Non-Instructional Staff by Occupational Category

Occupational Category	Full-Time	Part-Time	Total
Library and Student and Academic Affairs and Other Education Services Occupations	16	0	16
Management Occupations	75	0	75
Business and Financial Operations Occupations	36	0	36
Computer, Engineering, and Science Occupations	42	0	42
Community, Social Service, Legal, Arts, Design, Entertainment, Sports, and Media Occupations	54	3	57
Healthcare Practitioners and Technical Occupations	17	1	18
Service Occupations	65	0	65
Sales and Related Occupations	8	0	8
Office and Administrative Support Occupations	81	1	82
Natural Resources, Construction, and Maintenance Occupations	44	0	44
Production, Transportation, and Material Moving Occupation	39	0	39
Grand Total	447	5	482

Notes:

1. Data Source: IPEDS Human Resources (HR) Survey 2024–25 (data as of November 1, 2024)
2. The IPEDS HR Survey data is updated annually each April.



VMI Full-Time Non-Instructional Staff

IPEDS Occupational Category	Gender	Hispanic/ Latino	Asian	Black or African American	Native Hawaiian or Other Pacific Islander	White	Total
Library and Student and Academic Affairs and Other Education Services Occupations	M					8	8
	F	1				7	8
Management Occupations	M	1	1	4		40	46
	F			3		26	29
Business and Financial Operations Occupations	M			1		11	12
	F			1		23	24
Computer, Engineering, and Science Occupations	M			3	1	29	33
	F		1			8	9
Community, Social Service, Legal, Arts, Design, Entertainment, Sports, and Media Occupations	M			8		33	41
	F		1	3		9	13
Healthcare Practitioners and Technical Occupations	M		1			3	4
	F					13	13
Service Occupations	M	1		2		39	42
	F	2		2		19	23
Sales and Related Occupations	M	1		1		4	6
	F					2	2
Office and Administrative Support Occupations	M	1				10	11
	F		1	1		68	70
Natural Resources, Construction, and Maintenance Occupations	M			2		39	41
	F					3	3
Production, Transportation, and Material Moving Occupation	M					8	8
	F	1	1			29	31
Grand Total		8	6	31	1	431	477

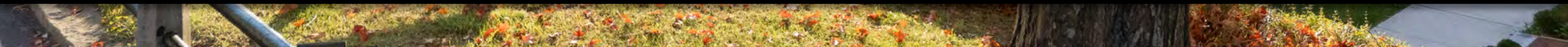
Notes:

1. Data Source: IPEDS Human Resources (HR) Survey 2024–25 (data as of November 1, 2024)
2. The IPEDS HR Survey data is updated annually each April.

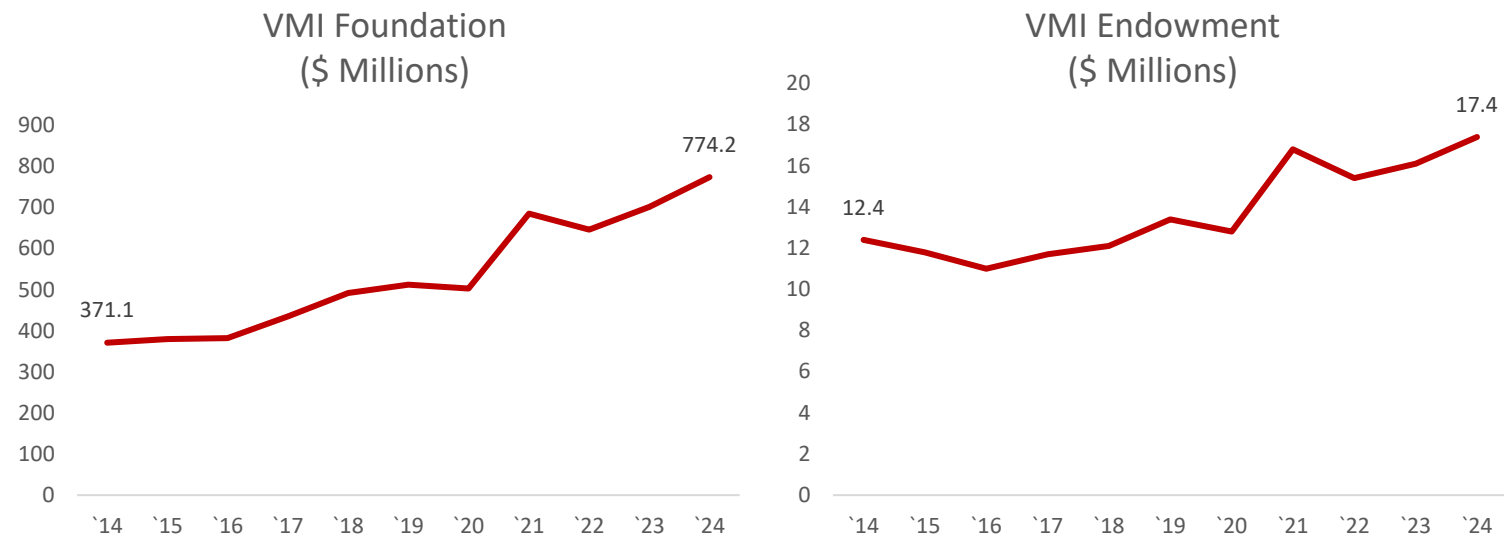




ENDOWMENT



Endowment



(\$ Millions*)	2014	2015	2016	2017	2018	2019	2020	2021	2022	2023	2024
VMI Foundation	371.1	380	382	435.2	491.8	512.2	503.2	685.5	646.1	702.1	774.2
VMI Endowment	12.4	11.8	11.0	11.7	12.1	13.4	12.8	16.8	15.4	16.1	17.4

Notes:
1. *Dollar amounts are as of July each year.
2. The Foundation endowment includes the VMI endowment and the Marshall Foundation endowment.

