

2025-26 Virginia Military Institute

# Fact Book



OFFICE OF INSTITUTIONAL  
EFFECTIVENESS



# Preface

The Virginia Military Institute's Fact Book is compiled by the Office of Institutional Effectiveness (OIE). The Fact Book continues to provide reliable statistical data and summary information designed to answer the most frequently asked questions about VMI. The Fact Book is based on sound institutional research and serves as a good first point of reference for institutional assessment, self-study, and planning. In total, this fact book provides the institutional profile as of Fall 2025 for a limited number of frequently requested data points. OIE would like to sincerely thank everyone who provided data, information, and suggestions that contributed to the improvement and integrity of the Fact Book. This publication is reflective of the collaborative nature of our Post community and its dedication to engagement.

Col. Andrew L. Luna, Director of OIE

Ms. Di Han, Associate Director, Institutional Research

Maj. Andee Oberosler, Research Analyst

Maj. Jody Miller, Assessment Analyst



# Table of Contents

Mission and Vision.....p. 4	Commissioning.....p. 66
Accreditations.....p. 5	Majors, Minors, and Concentrations... .p. 69
Administration.....p. 6	Academic Honors.....p. 74
Rankings.....p. 17	Programs Abroad.....p. 76
Admissions.....p. 20	Undergraduate Research.....p. 78
Enrollment.....p. 28	Tuition and Fees.....p. 80
Retention Rates.....p. 39	Financial Aid.....p. 84
Graduation Rates.....p. 47	VMI Employees.....p. 87
Underrepresented Cadets/Pell Recipients.....p. 54	Endowment.....p. 93
Athletics.....p. 58	



# Mission and Vision

## Mission

Virginia Military Institute believes that the measure of a college lies in the quality and performance of its graduates and their contributions to society.

Therefore, it is the mission of Virginia Military Institute to produce educated, honorable men and women, prepared for the varied work of civil life, imbued with love of learning, confident in the functions and attitudes of leadership, possessing a high sense of public service, advocates of the American Democracy and free enterprise system, and ready as citizen-soldiers to defend their country in time of national peril.

To accomplish this result, Virginia Military Institute shall provide to qualified young men and women undergraduate education of highest quality — embracing engineering, science, and the arts — conducted in, and facilitated by, the unique VMI system of military discipline.

## Vision

To be the premier small college in the nation, unequaled in producing educated and honorable citizen-leaders, with an international reputation for academic excellence supported by a unique commitment to character development, self-discipline and physical challenge, conducted in a military environment.





# Accreditation

VMI Entity	Accrediting Agency	Initial Accreditation	Date of Reaffirmation	Date of Next Reaffirmation
Virginia Military Institute	SACSCOC*	1926	2017	2027
Civil Engineering Major	ABET	1936	2024	2030
Economics & Business Major	AACSB	2009	2022	2030
Electrical Engineering Major	ABET	1936	2024	2030
Mechanical Engineering Major	ABET	1987	2024	2030
Chemistry Major	ACS**	1948	2024	2029

<https://www.vmi.edu/about/offices-a-z/institutional-effectiveness/accreditation/>

Note:

\*Virginia Military Institute (VMI) is accredited by the Southern Association of Colleges and Schools Commission on Colleges (SACSCOC) to award baccalaureate degrees. VMI also may offer credentials such as certificates and diplomas at approved degree levels. Questions about the accreditation of VMI may be directed in writing to the Southern Association of Colleges and Schools Commission on Colleges at 1866 Southern Lane, Decatur, GA 30033-4097, by calling (404) 679-4500, or by using information available on SACSCOC's website ([www.sacscoc.org](http://www.sacscoc.org)).

\*\*The American Chemistry Society (ACS) uses the language approval of programs and curriculum to represent an approved program based on their standards over the phrase accreditation.



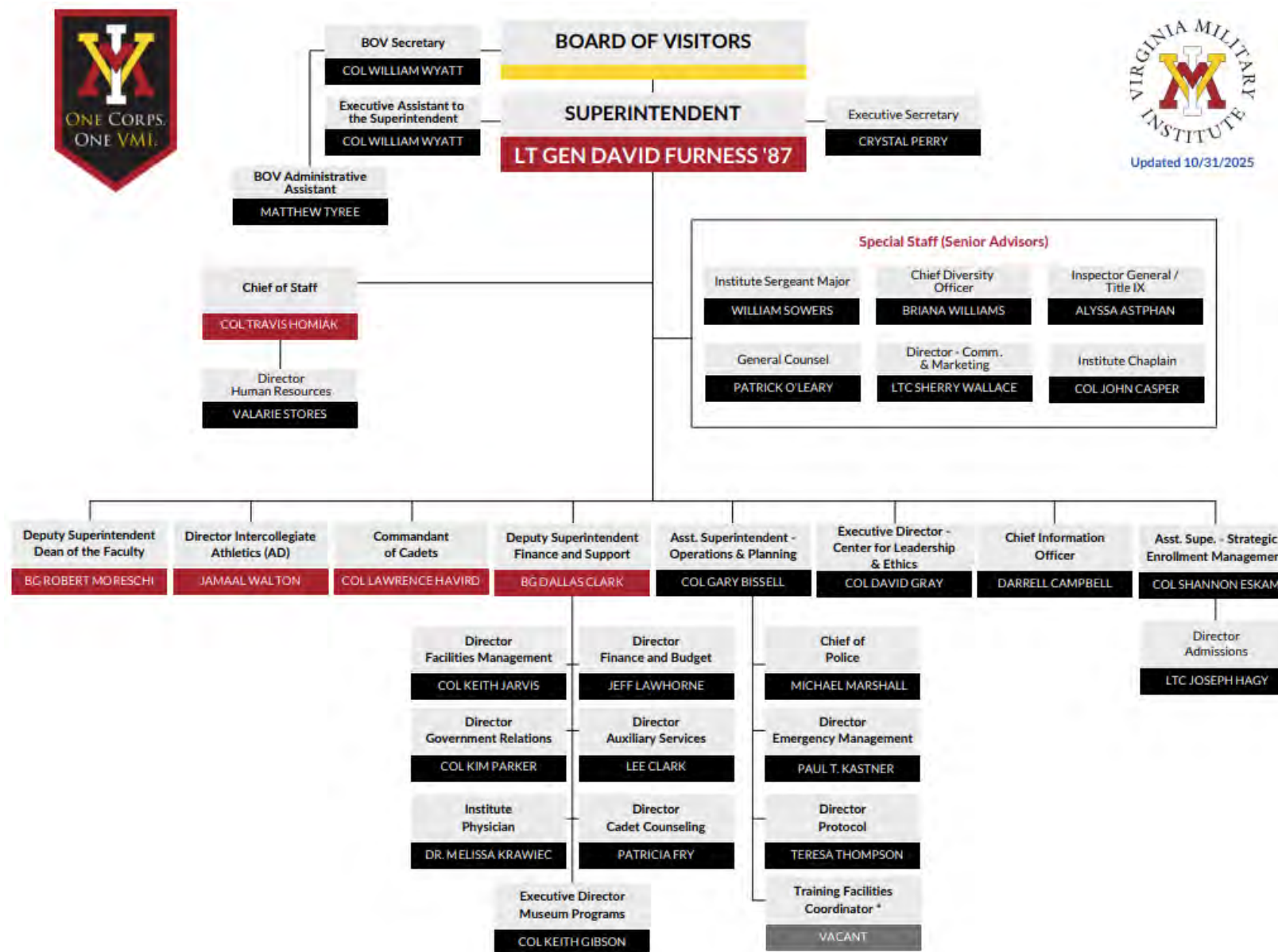




# ADMINISTRATION









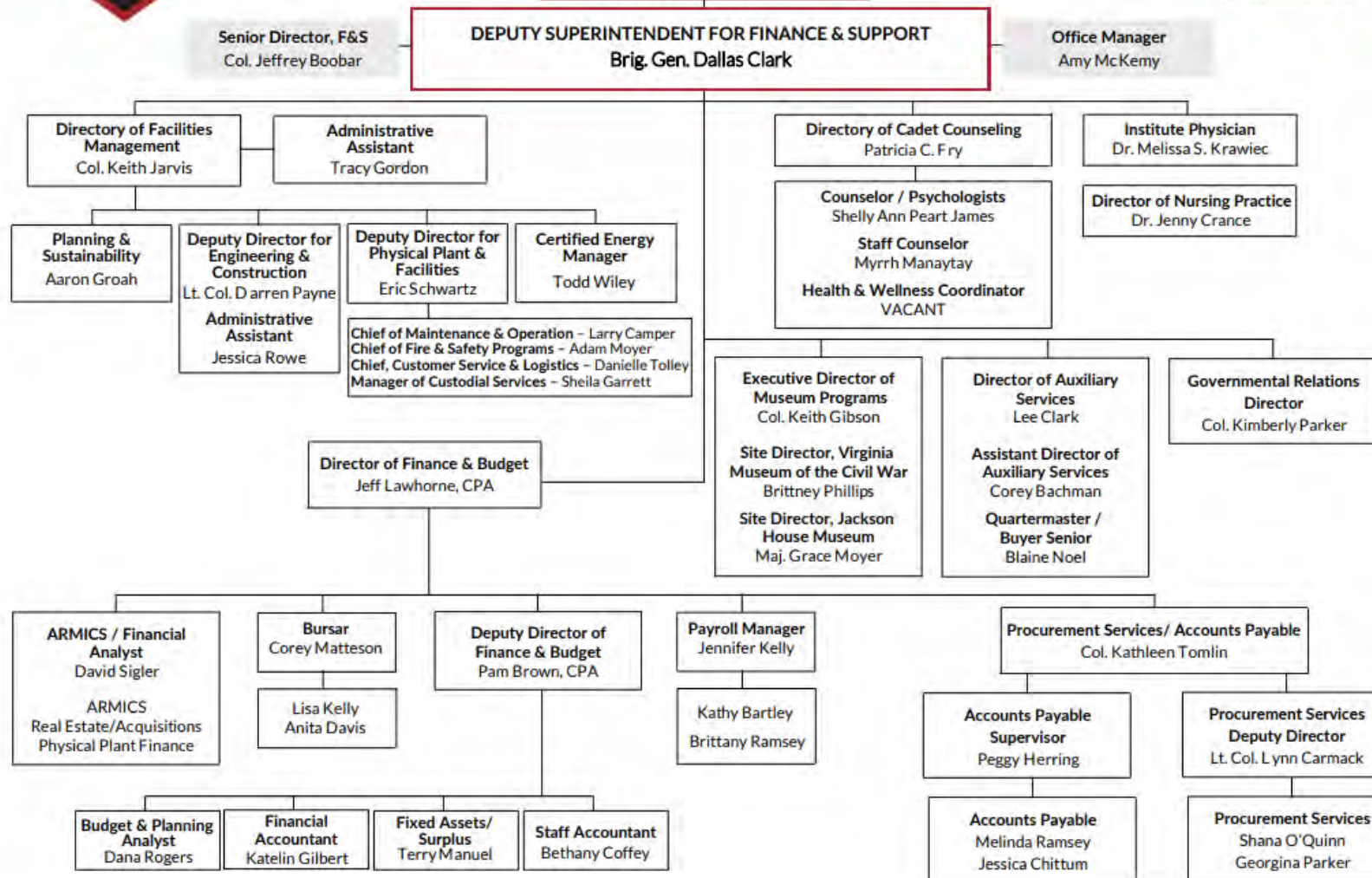
## BOARD OF VISITORS

### SUPERINTENDENT

**LT GEN DAVID FURNESS '87**



Updated 10/31/2025







BOARD OF VISITORS

SUPERINTENDENT

LT GEN DAVID FURNESS '87

DEPUTY SUPERINTENDENT FOR ACADEMICS  
& DEAN OF THE FACULTY

Brig. Gen. Robert W. Moreschi

Executive Assistant  
Olivia Fowler



Updated 10/31/2025

DEAN'S STAFF

Associate Dean for  
Academic Affairs and  
Director, Institute Honors  
Col. Robert McDonald

Director, Undergraduate  
Research  
Lt. Col. Molly Kent

Director, Miller Academic  
Center  
Lt. Col. Allyson Pierce

Director, Math Education  
and Resource Center  
Col. Troy Siemers

Director, Office of Global  
Education  
Col. Jeff Kendrick

Director, Preston Library  
Col. Pongracz Sennyey

Associate Dean for  
Academic Administration  
& Planning  
Capt. Mike Sebastino

Administrator, Sponsored  
Programs  
Dr. Megan Newman

Director, Summer  
Sessions  
Dr. Laura Xie

Director, Summer  
Transition Program  
Col. Thomas C. Timmes

Office Coordinator  
Leigh Ann Forquer

ACADEMIC DEPARTMENT HEADS &  
ROTC COMMANDING OFFICERS

Applied Mathematics  
Col. Troy Siemers

Biology  
Col. Ashleigh Smythe

Chemistry  
Col. Stan Smith

Civil & Environmental  
Engineering  
Col. Chuck Newhouse

Computer and Information  
Sciences  
Col. David Smith

Economics and Business  
Col. Jeff S. Smith

Electrical & Computer  
Engineering  
Col. Shawn Addington

English, Rhetoric, and  
Humanistic Studies  
Col. Emily P. Miller

History  
Col. Houston Johnson

International Studies  
Col. Dennis Foster

Mechanical Engineering  
Col. Gerald "Jay" Sullivan

Modern Languages  
& Cultures  
Col. Abbey Carrico

Human Performance  
& Wellness  
Col. Jay Johnson

Physics  
Col. Stacey Vargas

Psychology  
Col. James Gire

ROTC - Air Force  
Col. Eric Steele

ROTC - Army  
COL Jody "Joe" Hansen

ROTC - Navy / Marine  
Corps  
Col. Ryan M. Finn

OTHER PROGRAM STAFF

Interim Associate Registrar  
Lt. Col. Michelle Murphy

Director, Institute Writing Program  
Col. Christina McDonald

Director, Career Services  
Lt. Col. Ammad Sheikh

Director, CLE, & Coordinator, LEAD 344  
Col. Dave Gray

Director, Institutional Effectiveness  
Col. Andrew Luna

Director, Innovation Programming  
Col. Cliff West





BOARD OF VISITORS

SUPERINTENDENT

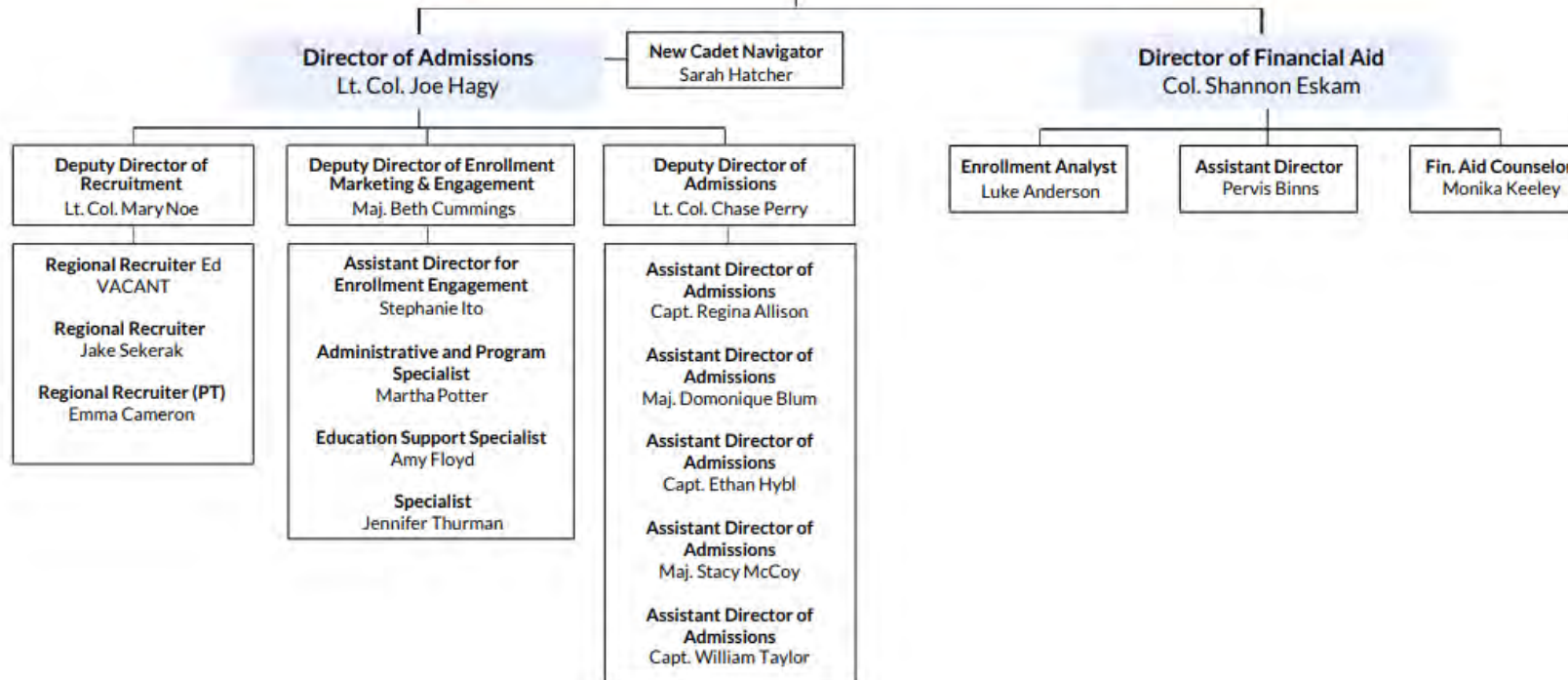
LT GEN DAVID FURNESS '87

ASSISTANT SUPERINTENDENT FOR  
STRATEGIC ENROLLMENT MANAGEMENT  
Col. Shannon Eskam

Executive Assistant  
Maximus McHugh



Updated 10/31/2025







BOARD OF VISITORS

SUPERINTENDENT

LT GEN DAVID FURNESS '87



Updated 10/31/2025

ASSISTANT SUPERINTENDENT - OPERATIONS & PLANNING

Col. Gary Bissell

Assistant Operations and Planning Officer  
for Major Events & Long-Term Planning  
Katrina Butner

Assistant Operations and Planning Officer  
for Multi-Use Facilities  
Lt. Col. Collin Bissell

Chief of Police  
Chief Mike Marshall

Police Captain  
Capt. David Henson

1st Sergeant  
Operations Division  
Troy Wimer

1st Sergeant Support  
Services Division  
Seth Clark

Director of Emergency  
Management  
Paul T. Kastner

Protocol Officer  
Teresa Thompson

Assistant Protocol Officer  
Brooke K. Higgins

Aquatics Center  
Director  
Patrick Ogden

Assistant Director  
Aquatics Center  
Nicole Kozikowski





BOARD OF VISITORS

SUPERINTENDENT

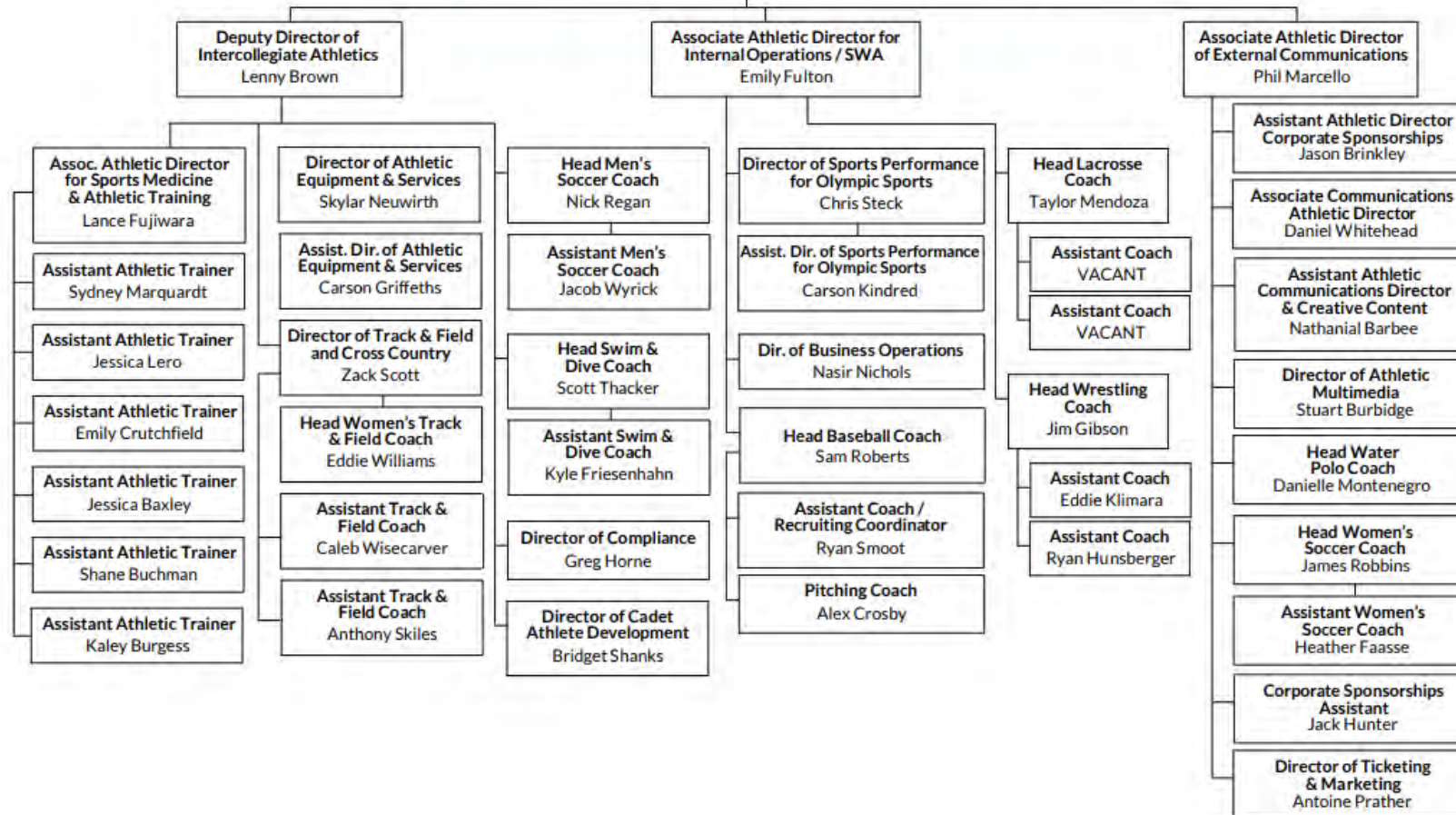
LT GEN DAVID FURNESS '87



Faculty Athletic Representative  
Col. Jay Johnson

DIRECTOR, INTERCOLLEGIATE ATHLETICS  
Jamaal Walton

Executive Assistant for  
Intercollegiate Athletics  
VACANT







BOARD OF VISITORS

SUPERINTENDENT

LT GEN DAVID FURNESS '87

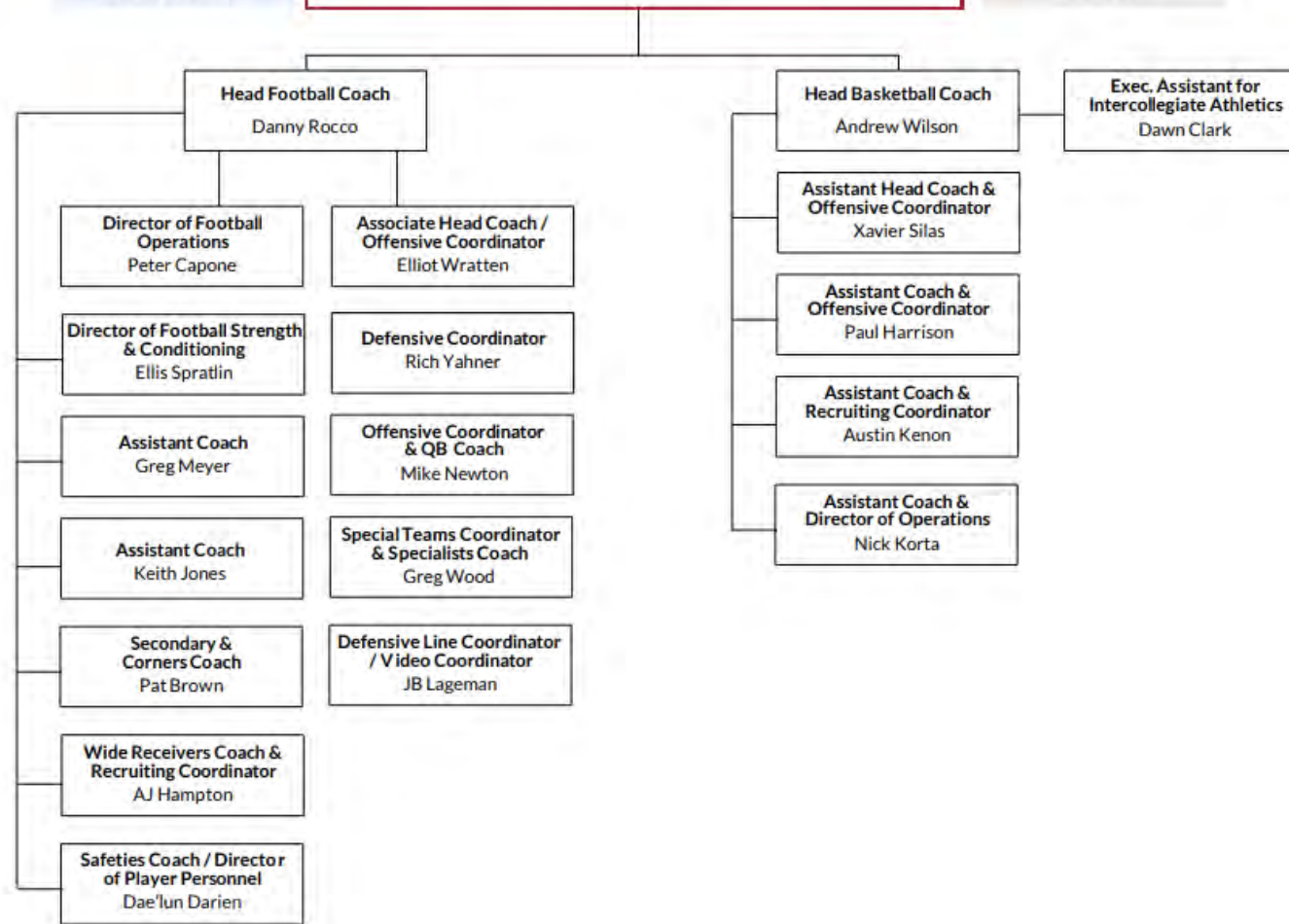


Updated 10/31/2025

Faculty Athletic  
Representative  
Col. Jay Johnson

DIRECTOR, INTERCOLLEGIATE ATHLETICS  
Jamaal Walton

Executive Assistant for  
Intercollegiate Athletics  
VACANT





BOARD OF VISITORS

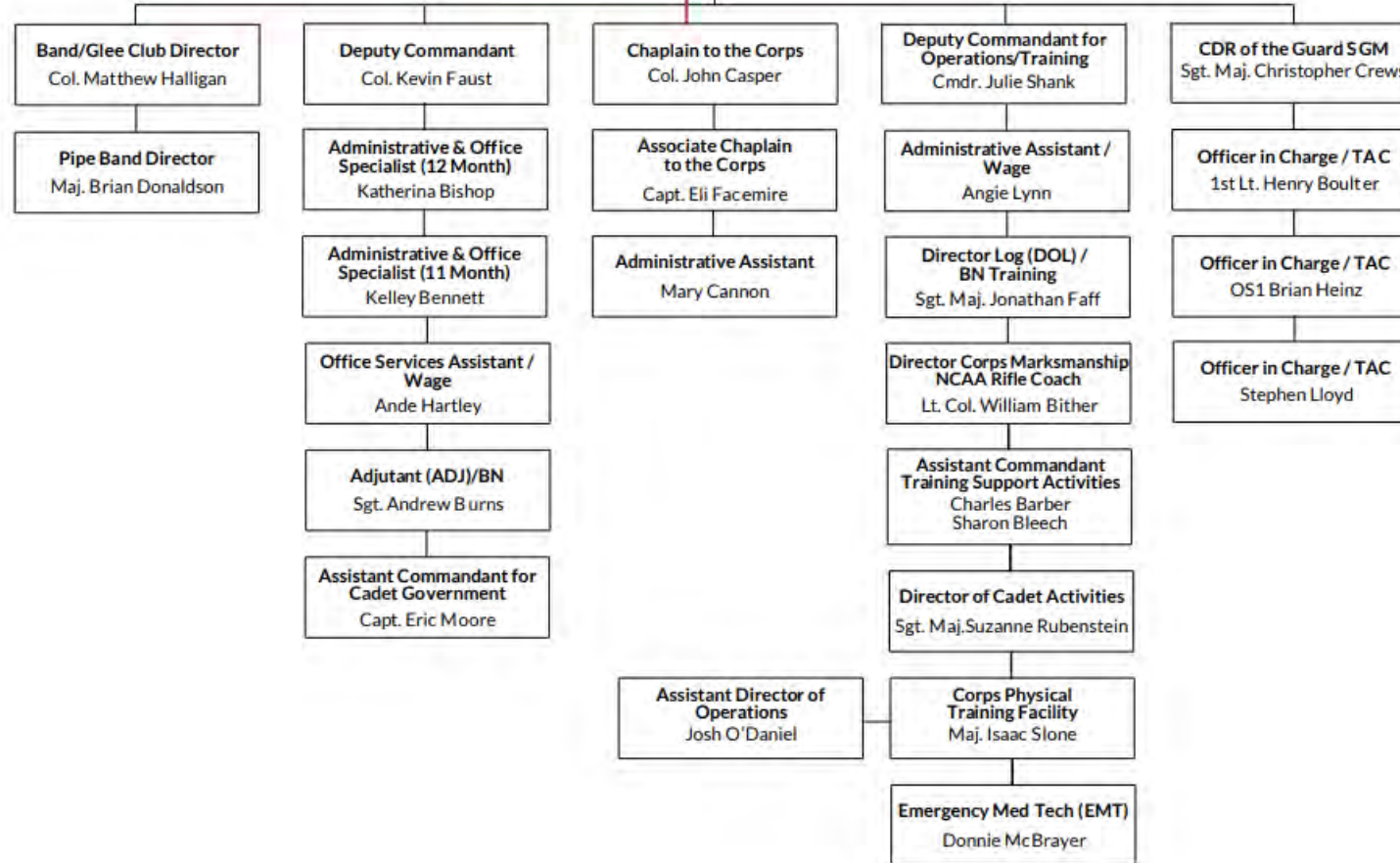
SUPERINTENDENT

LT GEN DAVID FURNESS '87

Sergeant Major  
to the Corps  
William Sowers

COMMANDANT OF CADETS  
Col. Lawrence Havird

Executive Administrative  
Assistant  
Amanda Hostetter







BOARD OF VISITORS

SUPERINTENDENT

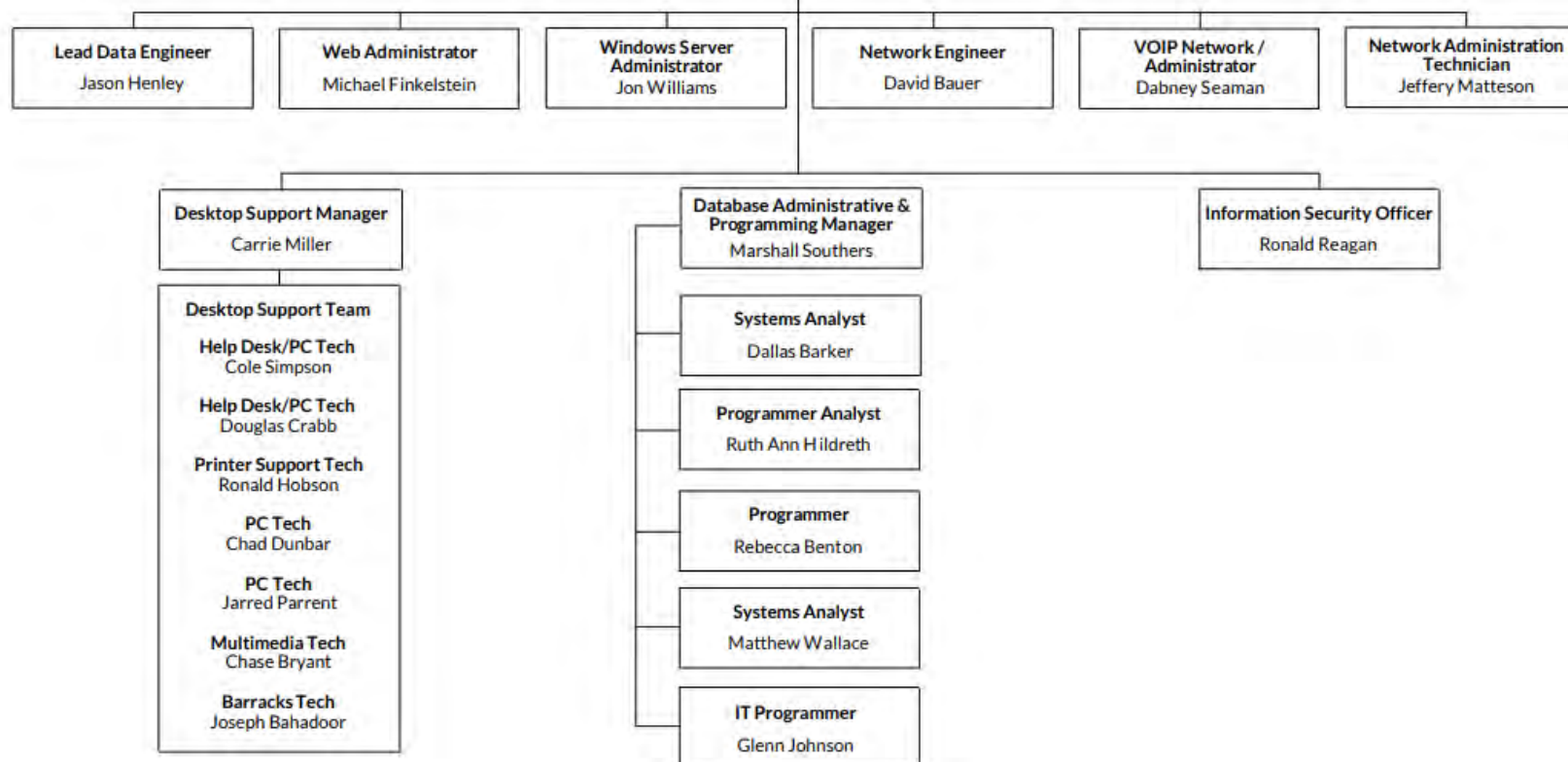
LT GEN DAVID FURNESS '87



Updated 10/31/2025

CHIEF INFORMATION OFFICER  
Darrell Campbell

Executive Administrative  
Assistant  
Melinda T. Jones





BOARD OF VISITORS

SUPERINTENDENT

LT GEN DAVID FURNESS '87



Updated 10/31/2025

EXECUTIVE DIRECTOR - CENTER FOR LEADERSHIP & ETHICS  
Col. David Gray







# RANKINGS





# Rankings

## **U.S. News and World Report**

[www.usnews.com/best-colleges](http://www.usnews.com/best-colleges)

[www.usnews.com/best-colleges/vmi-3753](http://www.usnews.com/best-colleges/vmi-3753)

### **2026 Best Colleges**

No. 4 in Top Public Schools

No. 65 in National Liberal Arts Colleges

No. 29 in Best Undergraduate Engineering Programs (where doctorate is not offered)

## **Washington Monthly**

<https://washingtonmonthly.com/2025-college-guide/>

No. 89/273 in 2025 Best Bang for the Buck Rankings: Southeast

## **Money Magazine**

[money.com/best-colleges/](http://money.com/best-colleges/)

Best Colleges in America 2025

4.5-star rating (out of 5)

## **PayScale**

<https://www.payscale.com/college-salary-report/best-schools-by-state/bachelors/virginia>

Updated for 2024 – No. 3 in Virginia by Salary Potential

## **Forbes**

<https://www.forbes.com/sites/fionariley/2025/08/26/forbes-top-25-public-colleges/>

America's Top Colleges List 2026

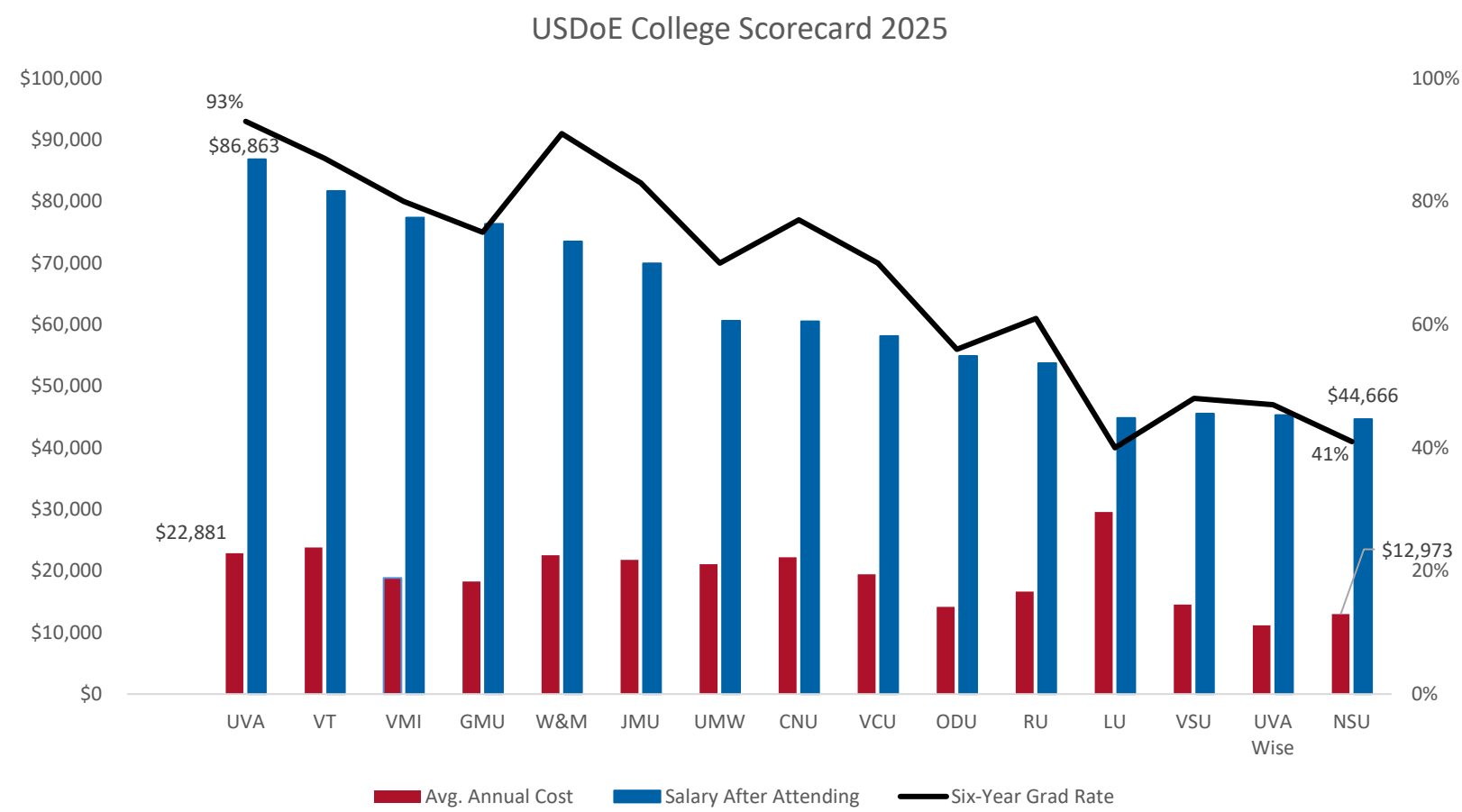
No. 306 Top Colleges 2026

No. 69 in The South

No. 133 in America's Best Value Colleges 2019



# Salary After Attending VMI



Notes:  
1. Source: [USDoE 2025 College Scorecard](#) (8 years after attending, received federal financial aid).  
2. VMI Avg. Annual Cost is \$18,849, Salary After Attending is \$77,369, and Six-Year Graduation Rate is 80%.  
3. VMI is 3<sup>rd</sup> salary after attending, 7<sup>th</sup> for cost for low-income families, 5<sup>th</sup> in graduation rates.





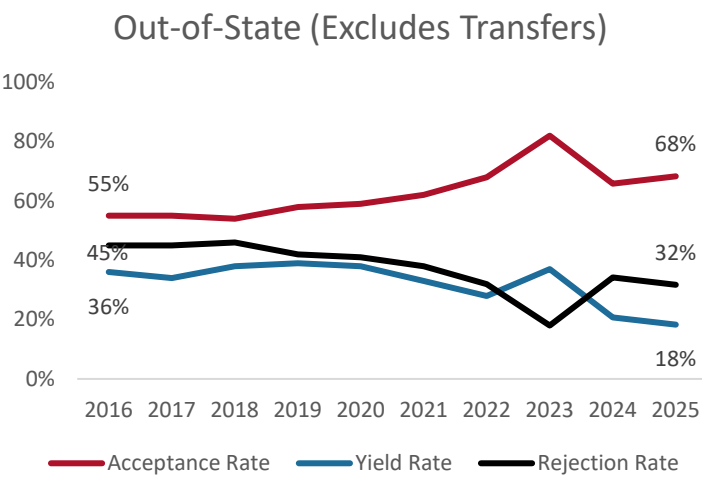
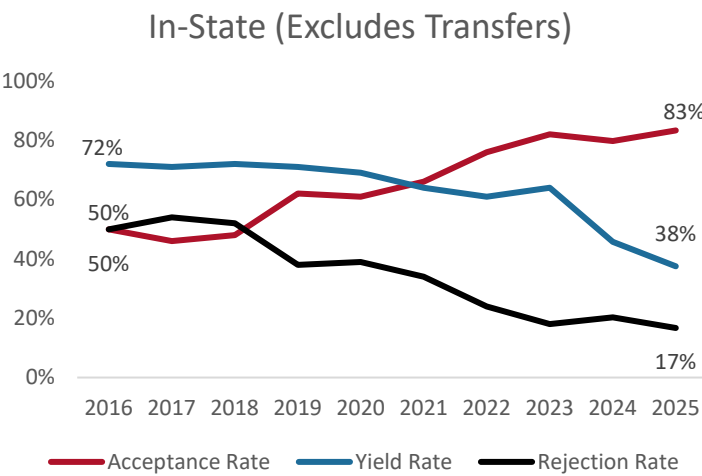


# ADMISSIONS



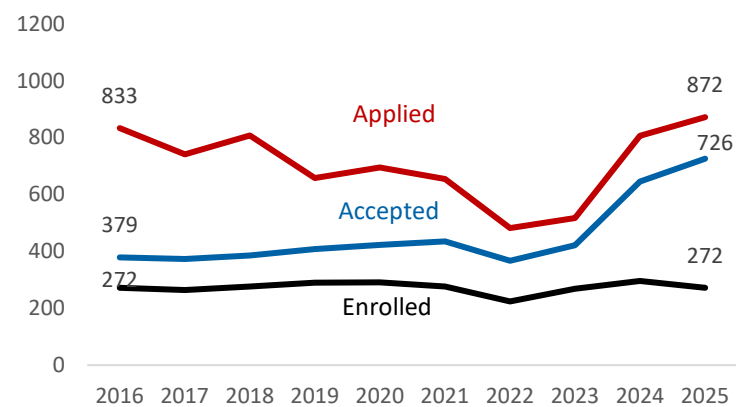
# Admissions

Fall 2025	Cadet Type	Applied	Accepted	Acceptance Rate	Enrolled	Yield Rate
In-State	First Time	872	726	83.3%	272	37.5%
	Transfer	44	27	61.4%	20	74.1%
	Total	916	753	82.2%	292	38.8%
Out-of-State	First Time	1361	929	68.3%	170	18.3%
	Transfer	63	28	44.4%	9	32.1%
	Total	1424	957	67.2%	179	18.7%
Total		2340	1710	73.1%	471	27.5%



# Admissions

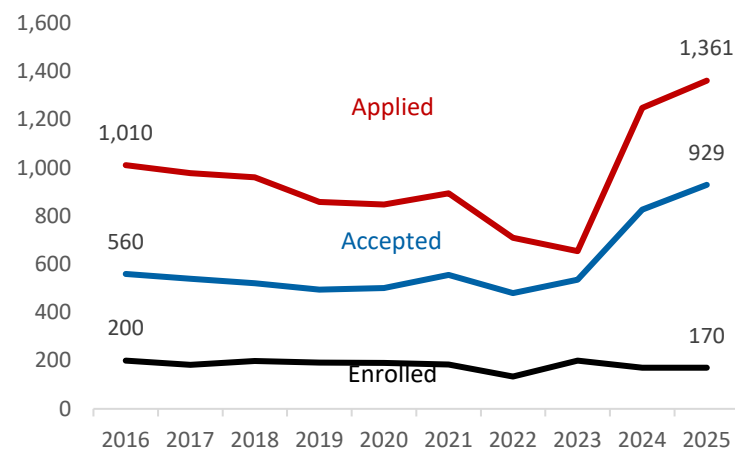
In-State Admissions Summary  
(Excludes Transfers)



In-State Admissions Summary (Excludes Transfers)

	2016	2017	2018	2019	2020	2021	2022	2023	2024	2025
Applied	833	741	808	658	695	655	482	517	806	872
Accepted	379	373	386	408	423	435	367	422	646	726
Enrolled	272	264	277	290	291	277	224	269	296	272

Out-of-State Admissions Summary  
(Excludes Transfers)



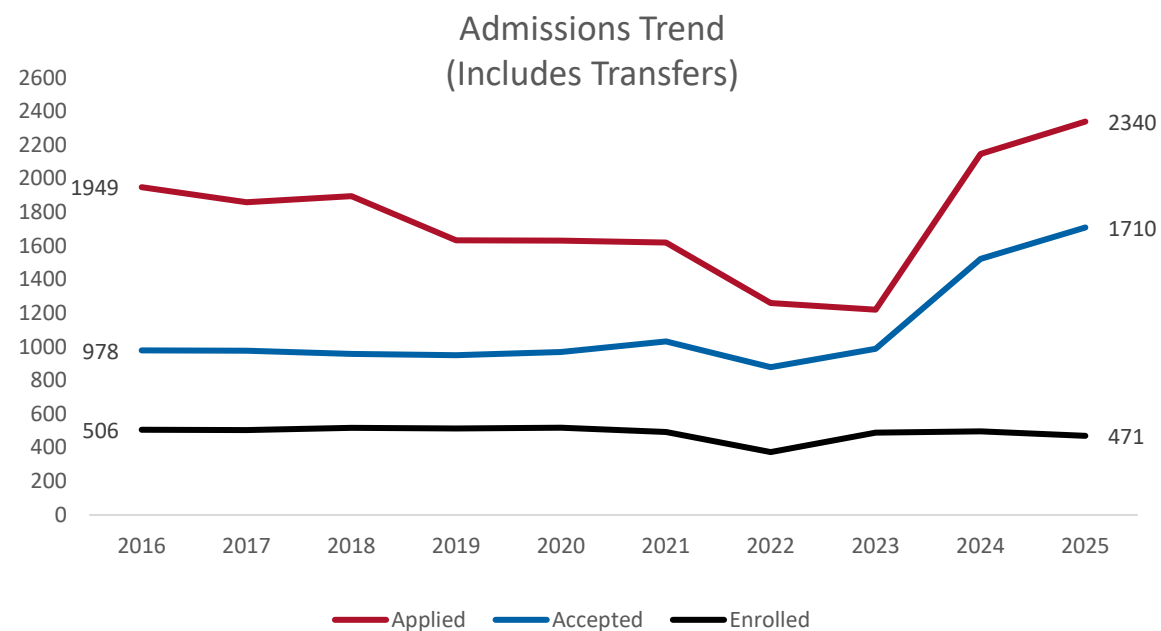
Out-of-State Admissions Summary (Excludes Transfers)

	2016	2017	2018	2019	2020	2021	2022	2023	2024	2025
Applied	1,010	977	960	858	848	894	710	654	1,248	1,361
Accepted	560	540	521	494	501	555	480	535	826	929
Enrolled	200	183	198	192	191	184	134	200	171	170





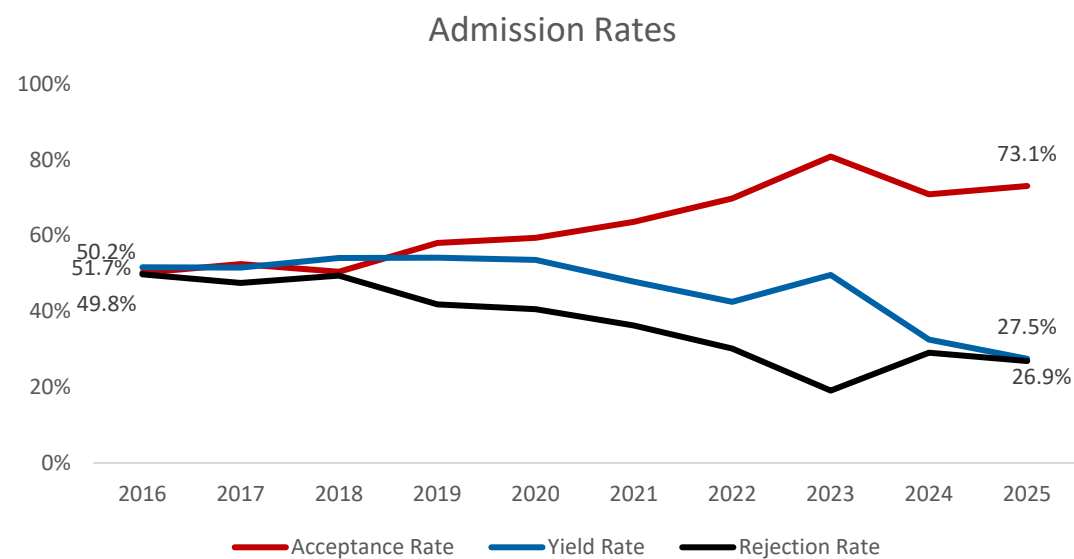
# Admissions



	2016	2017	2018	2019	2020	2021	2022	2023	2024	2025
Applied	1949	1861	1896	1634	1632	1621	1260	1221	2148	2340
Accepted	978	977	958	950	969	1032	879	988	1524	1710
Enrolled	506	504	518	515	519	494	374	490	497	471



# Admissions

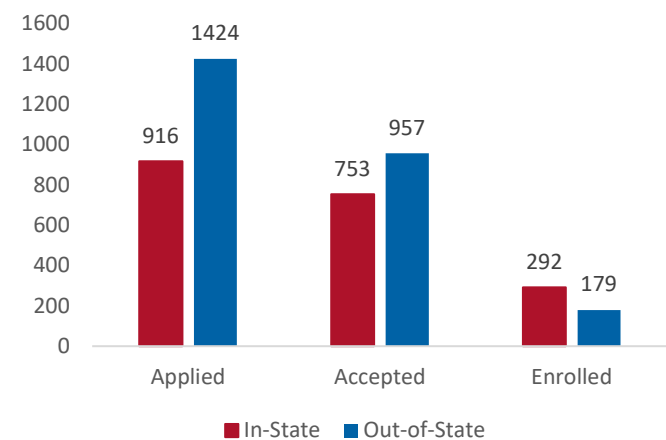


	2016	2017	2018	2019	2020	2021	2022	2023	2024	2025
Acceptance Rate	50.2%	52.5%	50.5%	58.1%	59.4%	63.7%	69.8%	80.9%	70.9%	73.1%
Yield Rate	51.7%	51.6%	54.1%	54.2%	53.6%	47.9%	42.5%	49.6%	32.6%	27.5%
Rejection Rate	49.8%	47.5%	49.5%	41.9%	40.6%	36.3%	30.2%	19.1%	29.1%	26.9%



# Admissions

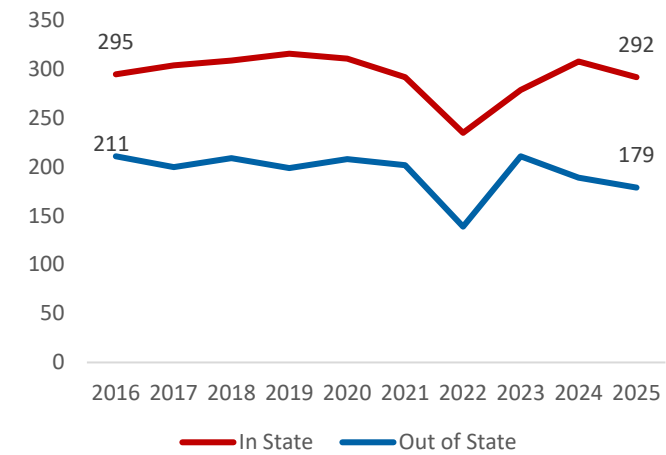
2025 Applicants by Residency



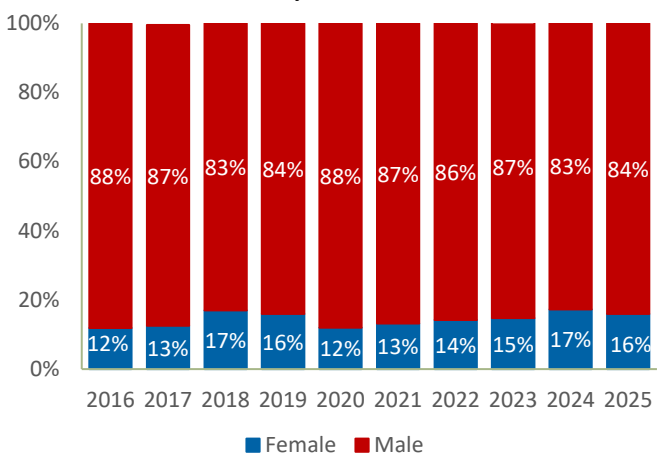
2025 Matriculants by Racial/Ethnic Category

American/Alaskan Native	0
Asian	29
Black or African American	57
Hawaiian/Pacific Islander	1
Hispanic/Latino	65
Multiple Races	25
Non-Resident Alien	11
White	283
Unknown	0
Total	471

Matriculants by Residency 2016-2025

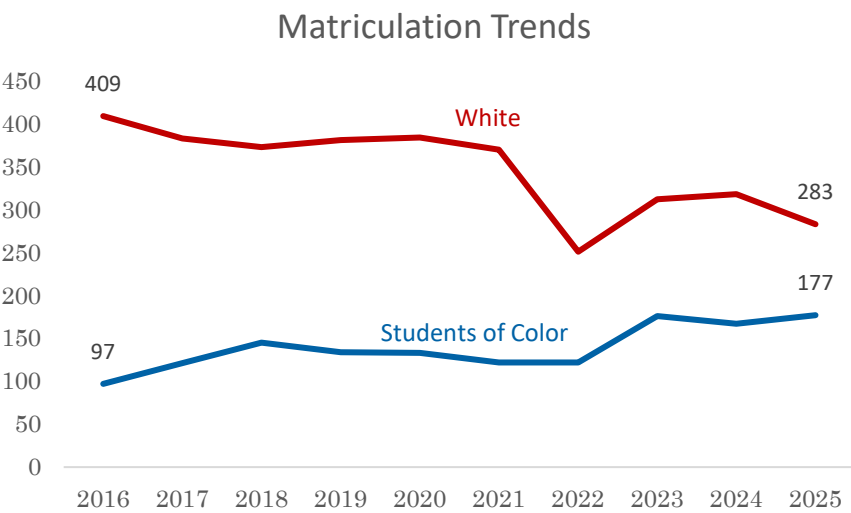


Matriculants by Gender 2016-2025





# Admissions



Fall	American/ Alaskan Native	Asian	Black or African American	Hawaiian/ Pacific Islander	Hispanic/ Latino	Multiple Races	White	Unknown	Students of Color	Total
2016	6	27	29	2	29	4	409	0	97	506
2017	3	27	31	0	52	8	383	0	121	504
2018	4	39	39	5	42	16	373	0	145	518
2019	5	34	36	2	40	17	381	0	134	515
2020	1	28	34	3	47	20	384	2	133	519
2021	2	28	27	1	44	20	370	2	122	494
2022	1	25	43	6	35	12	251	1	122	374
2023	4	32	58	3	58	21	312	2	176	490
2024	2	24	49	1	61	30	318	2	167	497
2025	0	29	57	1	65	25	283	0	177	471



# Admissions

SAT Scores of Incoming Classes 2016-25				
	25th Percentile Math	75th Percentile Math	25th Percentile Critical Reading	75th Percentile Critical Reading
2016	530	620	530	620
2017	540	640	560	640
2018	540	650	560	660
2019	540	630	550	640
2020	530	620	540	640
2021	530	630	550	650
2022	535	640	570	660
2023	510	620	530	640
2024	500	640	550	630
2025	530	620	555	640

## Standardized Test Scores - Class of 2029

Mean SAT Math Score	573
Mean SAT Verbal Score	603
Mean SAT Composite Score	1,176
Mean ACT Composite Score	24
Mean TOEFL Score	557
Mean High School GPA	3.60

### Notes:

1. Data obtained from the Admissions Data File. Scores based on FTF matriculating cadets.
2. Standardized tests are optional for VMI admission beginning Fall 2021.
3. The percentage of FTF who provide SAT scores in Fall 2023 is 25.7%, in Fall 2024 is 4.1%, and in Fall 2025 is 3.2%.
4. The percentage of FTF who provide ACT scores in Fall 2023 is 9.4%, in Fall 2024 is 3.4%, and in Fall 2025 is 3.6%.

ACT Scores of Incoming Classes 2016-25				
	25th Percentile Math	75th Percentile Math	25th Percentile English	75th Percentile English
2016	23	27	22	27
2017	23	27	22	28
2018	22	28	22	28
2019	22	26	21	26
2020	21	27	21	28
2021	21	26	20	26
2022	20	27	22	30
2023	23	26	21	28
2024	23	29	22	27
2025	20	26	22	28

## High School Rank - Class of 2029

	Enrolled	% of Ranked Students
Top Quarter	70	14.9%
Second Quarter	83	17.6%
Third Quarter	54	11.5%
Fourth Quarter	21	4.5%
Unranked/Transfer	243	51.6%





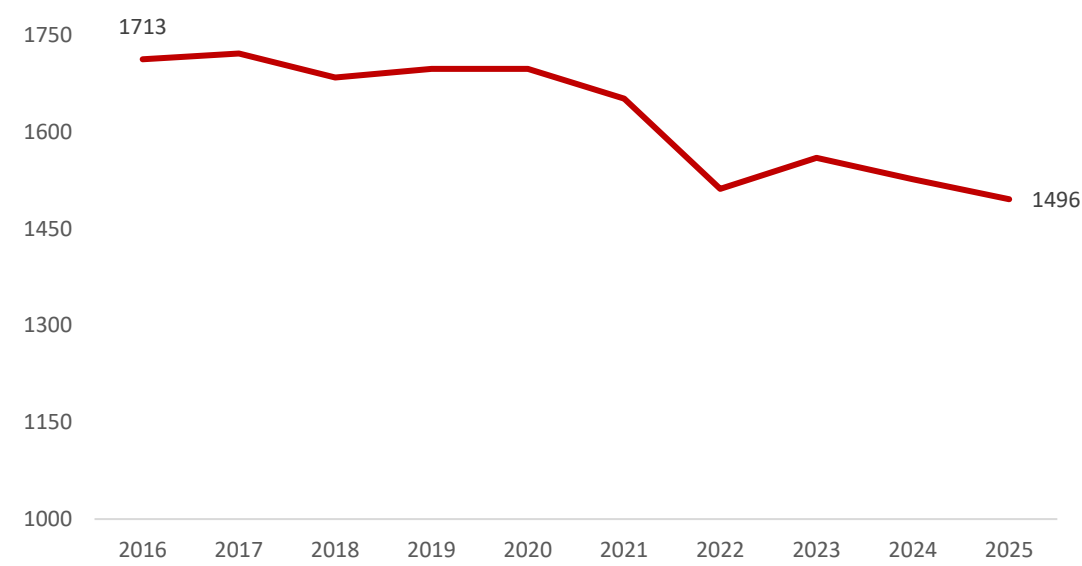
# ENROLLMENT





# Enrollment

Fall Census Enrollment Summary



Year	Headcount
2016	1713
2017	1722
2018	1685
2019	1698
2020	1698
2021	1652
2022	1512
2023	1560
2024	1527
2025	1496



# Enrollment

## 2025 Enrollment by Ethnicity & Gender

Race & Ethnicity	Male	Female	Total
Foreign			
Non-Resident Alien	32	2	32
In-State			
American/Alaska Native	4		4
Asian	39	11	50
Black or African American	79	20	99
Hispanic/Latino	83	26	109
Hawaiian/Pacific Islander	5	3	8
Multiple Races	41	6	47
Not Reported/Unknown	2	1	3
White	532	73	605
Out-of-State			
American/Alaska Native			
Asian	26	3	29
Black or African American	29	3	32
Hispanic/Latino	50	12	62
Hawaiian/Pacific Islander	1	1	2
Multiple Races	16	5	21
Not Reported/Unknown	2	1	3
White	325	65	390
Grand Total	1264	232	1496



# Enrollment

## United States Cadets

Residence	2025	2026	2027	2028	2029	Total	Residence	2025	2026	2027	2028	2029	Total
Alabama			3	1	1	5	Montana					1	1
Alaska			2	1		3	Nebraska		1			1	2
Arizona		1	1	3		5	Nevada			1	1		2
California	1	8	12	9	10	40	New Hampshire		1	1	1	1	4
Colorado		2	1	2	3	8	New Jersey		6	4	8	10	28
Connecticut		2	1	2		5	New Mexico	1					1
Delaware		2	1	2	2	7	New York		4	3	6	4	17
District of Columbia				1		1	North Carolina	1	13	10	14	21	59
Florida		9	4	9	6	28	Ohio		4	8	5	2	19
Georgia		6	12	7	13	38	Oregon			2		3	5
Hawaii				1		1	Pennsylvania		11	18	17	15	61
Idaho		1	1		1	3	Rhode Island				1	1	2
Illinois	1	1	3	1	4	10	South Carolina		2	5	7	5	19
Indiana	1		1	1		3	Tennessee		5	7	3	3	18
Kansas		1	1	4	1	7	Texas	2	3	10	9	13	37
Kentucky		6	1	1	2	10	Vermont						
Louisiana		2	1			3	Virginia	9	177	196	249	277	908
Maine		1			2	3	Washington			2			2
Maryland	1	4	15	12	16	48	West Virginia	1		4	1	5	11
Massachusetts		3		4	3	10	Wisconsin		3	1			4
Michigan			2	1	3	6	Guam						
Minnesota		3	2	1	2	8	Unknown		3	1	3	1	8
Mississippi		1		1		2	Total State						
Missouri		1	1	1		3	Breakdown	18	284	337	388	437	1464





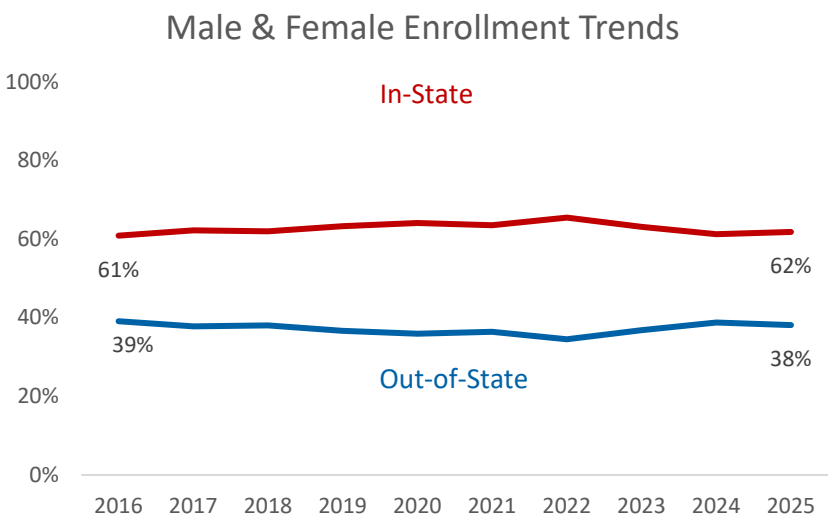
# Enrollment

## Foreign Cadets

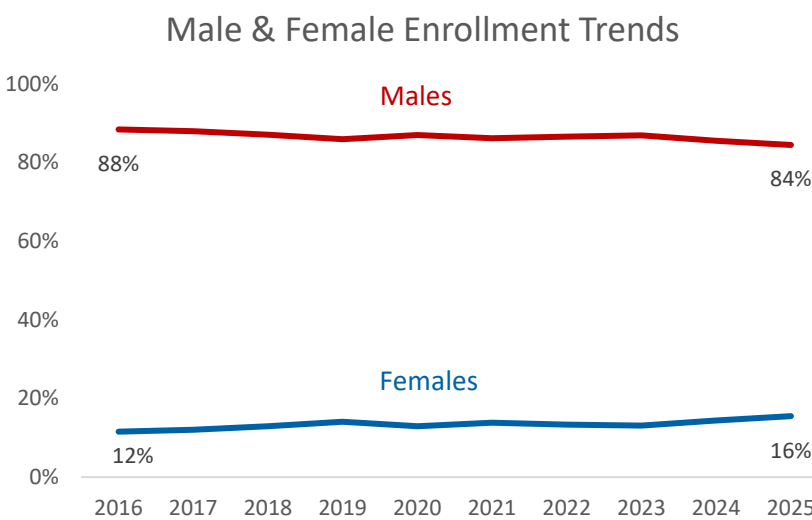
Residence	2025	2026	2027	2028	2029	Total
Cambodia		1				1
China (People's Republic)		1		1		2
Ethiopia					1	1
Georgia					1	1
Korea, Republic of (south)					1	1
Mongolia					1	1
Myanmar				1		1
Sweden				1		1
Taiwan		3	4	4	4	15
Thailand		2	2		1	5
Turkey				1		1
United Kingdom		1			1	2
<b>Foreign Total</b>		<b>8</b>	<b>6</b>	<b>8</b>	<b>10</b>	<b>32</b>
<b>US &amp; Foreign Total</b>	<b>18</b>	<b>292</b>	<b>343</b>	<b>396</b>	<b>447</b>	<b>1496</b>



# Enrollment



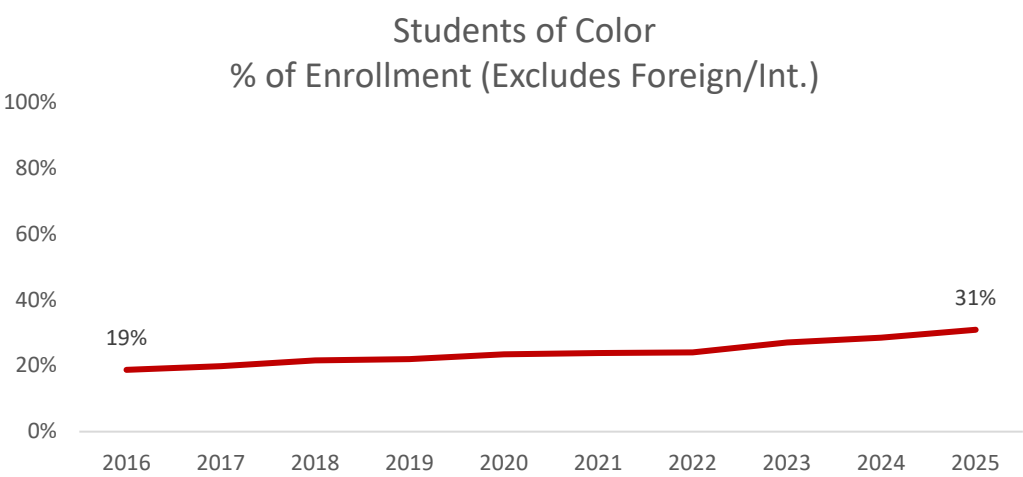
Year	In-State	Out	Total
2016	1043	670	1713
2017	1071	651	1722
2018	1044	641	1685
2019	1075	623	1698
2020	1088	610	1698
2021	1050	602	1652
2022	990	522	1512
2023	985	575	1560
2024	935	592	1527
2025	925	571	1496



Year	Males	Female	Total
2016	1515	198	1713
2017	1515	207	1722
2018	1467	218	1685
2019	1459	239	1698
2020	1478	220	1698
2021	1424	228	1652
2022	1310	202	1512
2023	1356	204	1560
2024	1307	220	1527
2025	1264	232	1496



# Enrollment



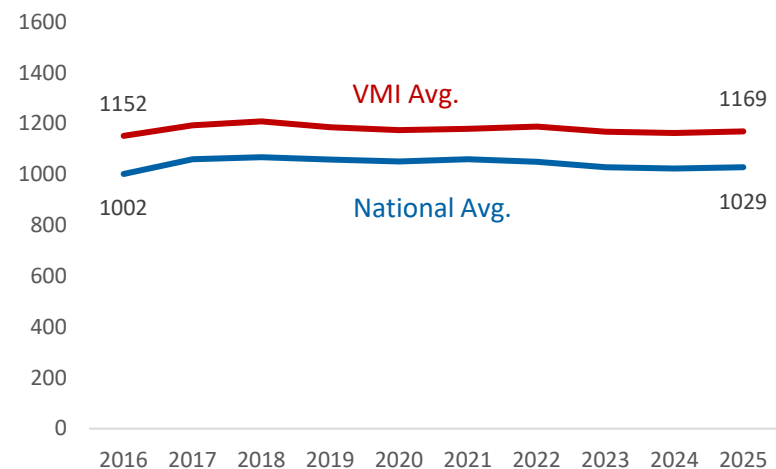
Fall	Foreign./ Int.	White	Af. American/ Black	American Indian/ Native American	Asian/ Pacific Islander	Hispanic	Multi- Race	Unknown	Total	# Students of Color
2016	27	1369	103	10	79	100	24	1	1713	316
2017	28	1356	103	9	77	122	26	1	1722	337
2018	31	1295	108	8	82	125	35	1	1685	358
2019	30	1301	102	11	84	129	41	0	1698	367
2020	31	1275	99	7	92	142	51	1	1698	391
2021	28	1230	102	8	92	134	57	1	1652	394
2022	27	1120	102	5	82	124	49	3	1512	362
2023	24	1119	111	6	89	146	61	4	1560	413
2024	30	1056	118	7	81	161	68	6	1527	435
2025	32	995	131	4	89	171	68	6	1496	463



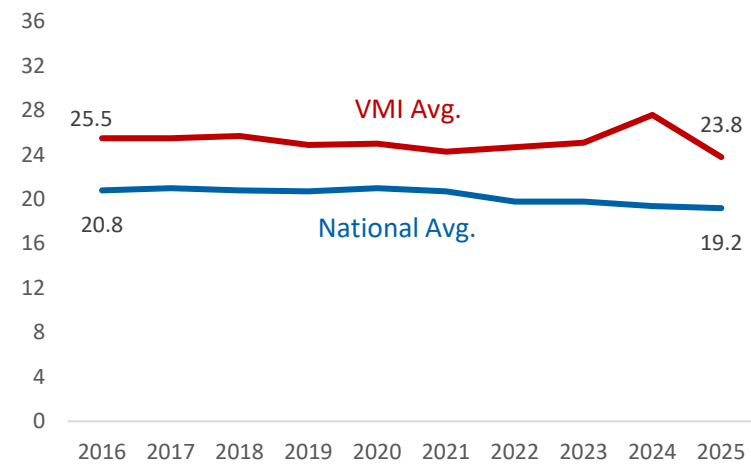


# Enrollment

Cadet Avg. SAT vs. National Avg.



Cadet Avg. ACT vs National Avg.

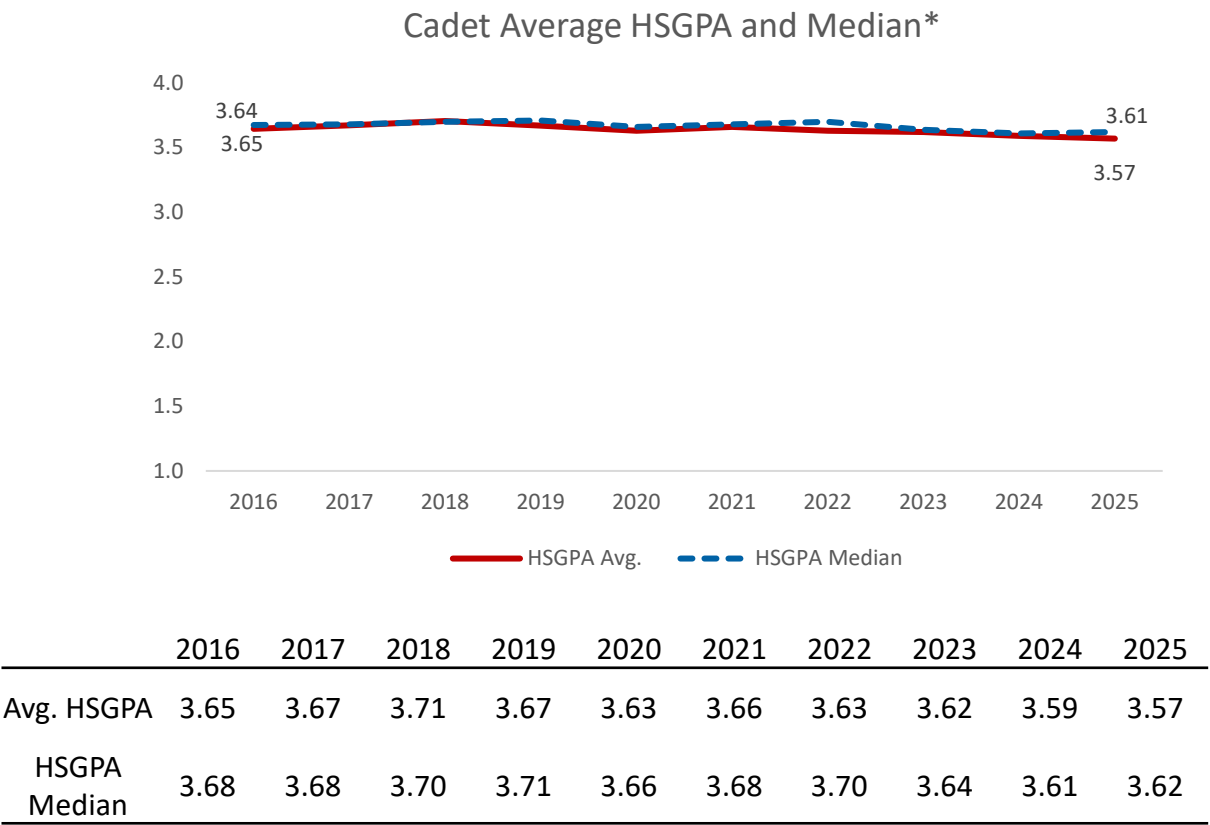


	2016	2017	2018	2019	2020	2021	2022	2023	2024	2025
Cadet Avg. SAT	1152	1193	1209	1186	1174	1180	1189	1168	1163	1169
National Avg. SAT	1002	1060	1068	1059	1051	1060	1050	1028	1024	1029
Cadet Avg. ACT	25.5	25.5	25.7	24.9	25.0	24.3	24.7	25.1	27.6	23.9
National Avg. ACT	20.8	21.0	20.8	20.7	20.6	20.3	19.8	19.8	19.4	19.2

- Notes:
- 1. A new SAT test was adopted in 2017.
  - 2. SAT and ACT scores are based on FTF matriculates at census date.
  - 3. Standardized tests are optional for VMI admission from Fall 2021.
  - 4. The percentage of FTF who provide SAT scores in Fall 2023 is 25.7%, in Fall 2024 is 5.2%, and in Fall 2025 is 3.3%.
  - 5. The percentage of FTF who provide ACT scores in Fall 2023 is 9.4% , in Fall 2024 is 3.1%, and in Fall 2025 is 3.5%.



# Enrollment



Notes:

1. HSGPA based on FTF matriculates at census date.

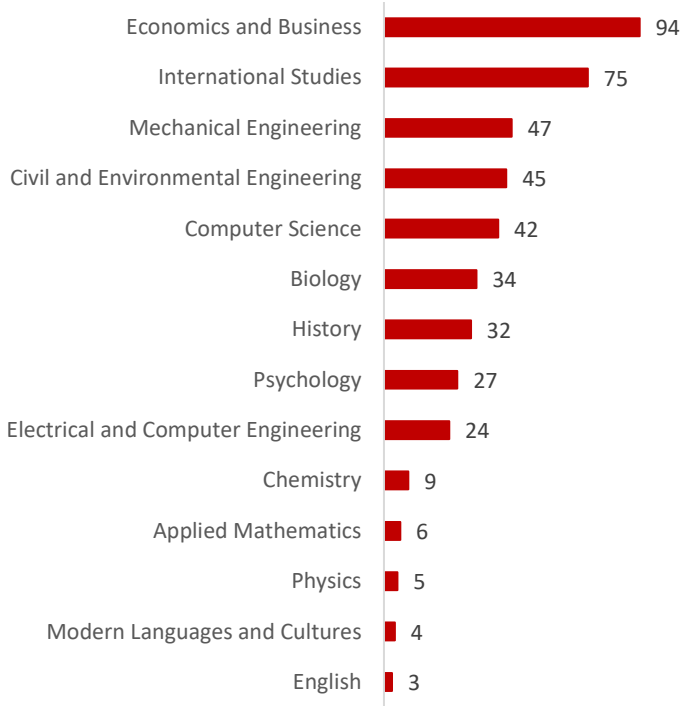
2. \*Average is the mathematical mean of a group of numbers while the median is the middle number in a set of data. Large differences between the two could indicate skewness or the deviation and distribution of individual scores in relation to the mean.



# Enrollment

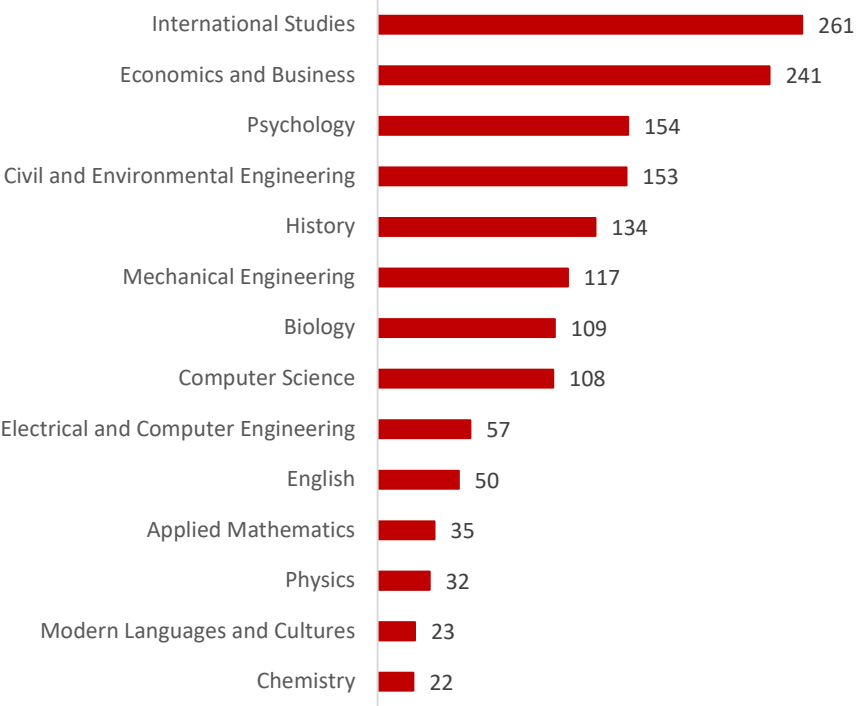
Curriculum Choices: Class of 2029

(Enrollment on Census Date)



2025 Enrollment by Major

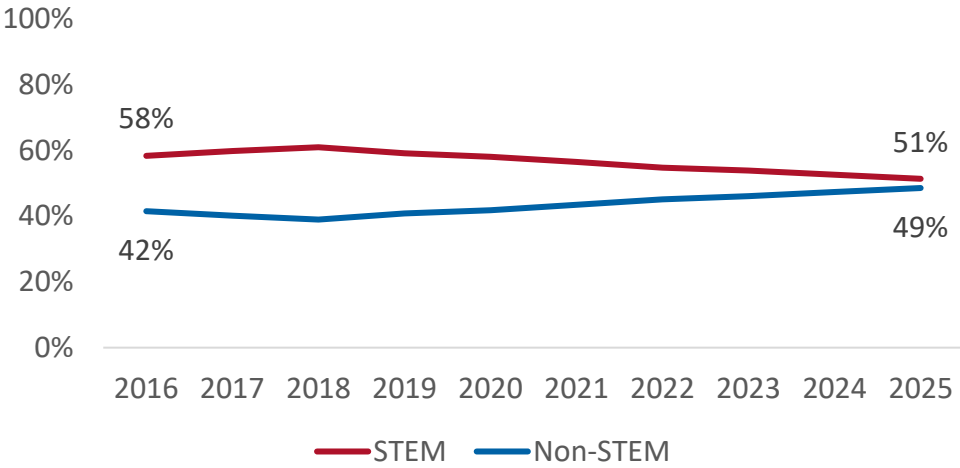
(All Classes Total)





# Enrollment

Enrollment Trends in STEM



**STEM Programs:**

Applied Mathematics  
Biology  
Chemistry  
Civil & Environmental Engineering  
Computer Science  
Electrical & Computer Engineering  
Mechanical Engineering  
Physics  
Psychology

1. The data on this page includes all class levels.
2. Psychology was reclassified as a STEM major starting in Fall 2014.

Year	STEM	Non-STEM	Total
FL16	1001	712	1713
FL17	1030	692	1722
FL18	1028	657	1685
FL19	1004	694	1698
FL20	987	711	1698
FL21	934	718	1652
FL22	829	683	1512
FL23	841	719	1560
FL24	804	723	1527
FL25	769	727	1496

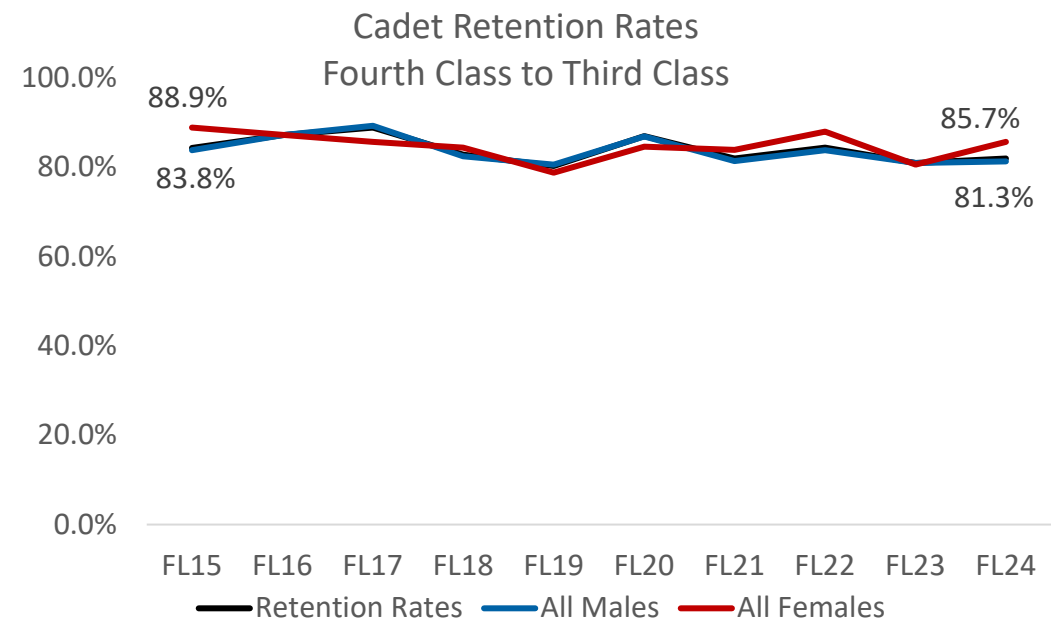




# RETENTION RATES



# Retention

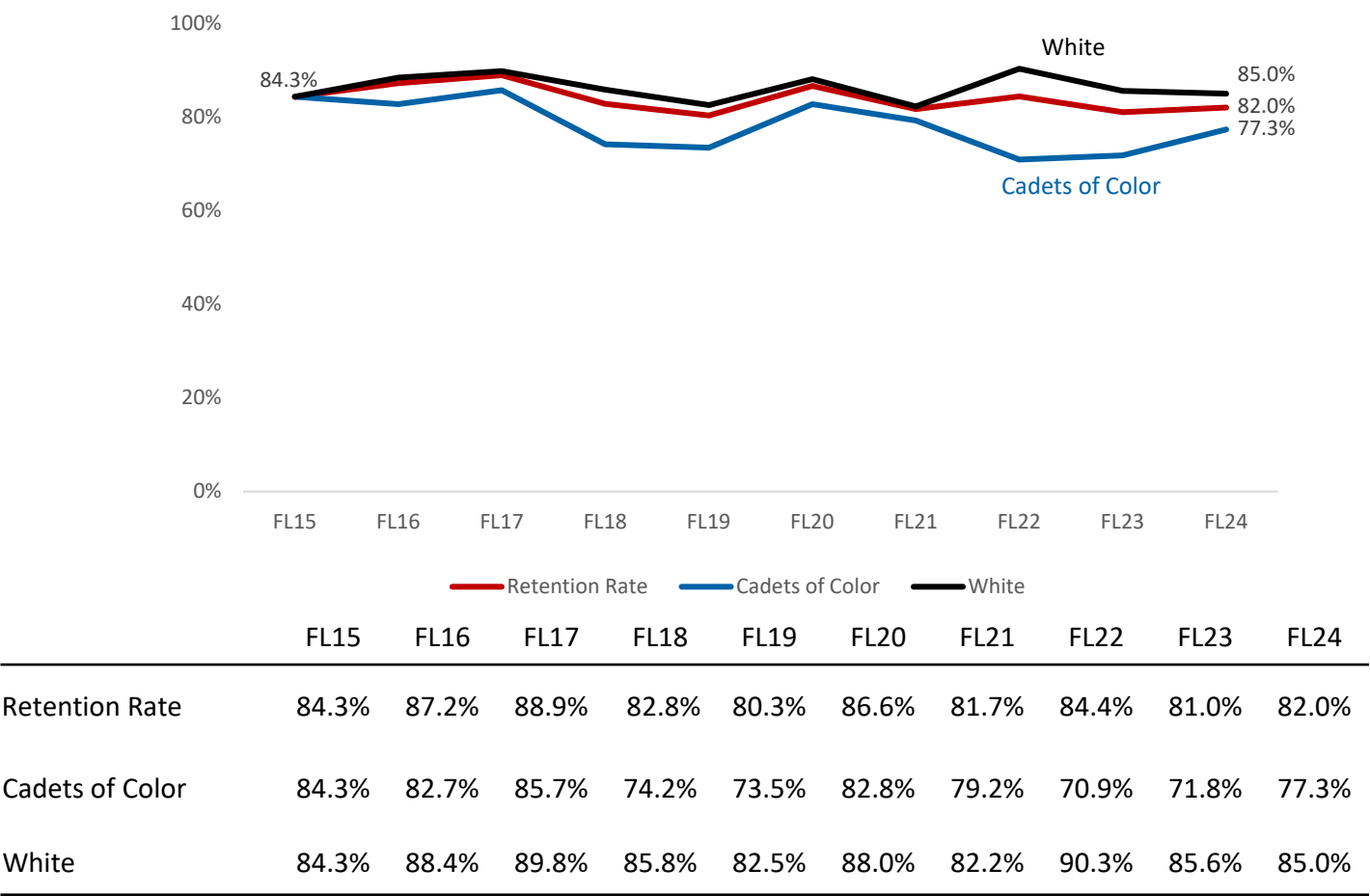


	FL15	FL16	FL17	FL18	FL19	FL20	FL21	FL22	FL23	FL24
Retention Rate	84.3%	87.2%	88.9%	82.8%	80.3%	86.6%	81.7%	84.4%	81.0%	82.0%
Male	83.8%	87.2%	89.3%	82.5%	80.6%	86.9%	81.4%	83.8%	81.0%	81.3%
Female	88.9%	87.3%	85.7%	84.4%	78.8%	84.6%	83.9%	88.0%	80.6%	85.7%





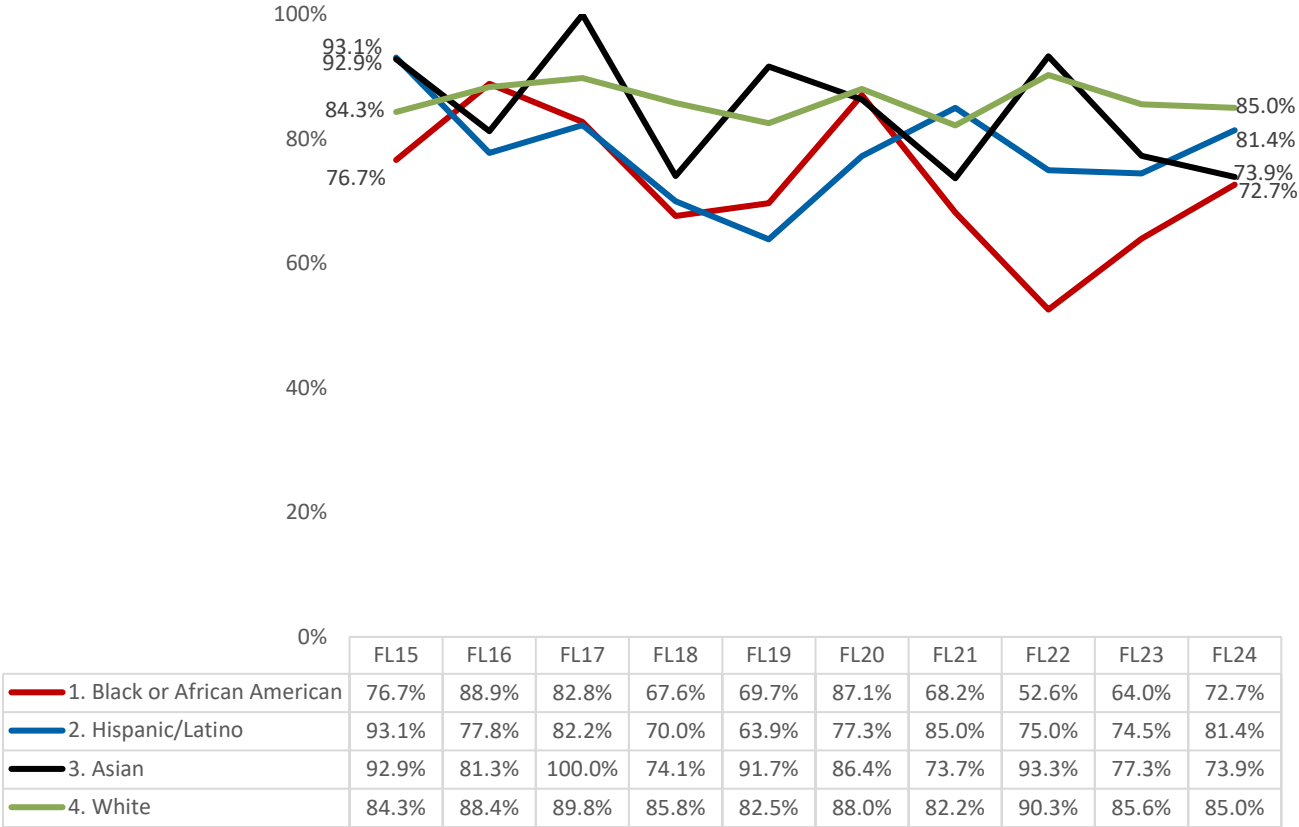
# Retention by Race



The groups Other Ethnicity and Unknown/Non-resident Aliens are excluded from this chart.



# Retention by Race



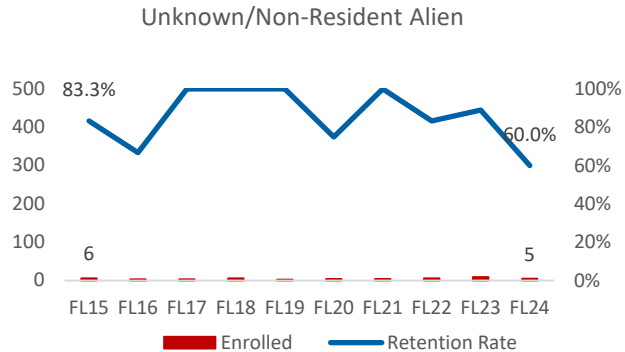
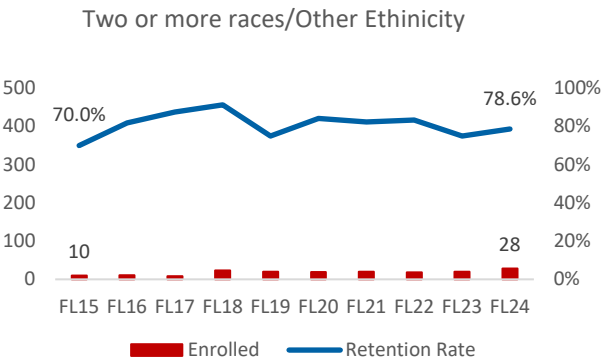
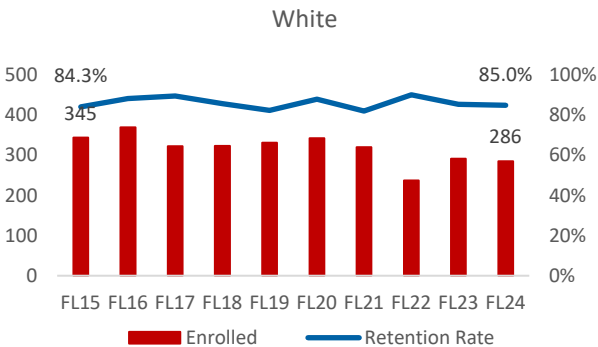
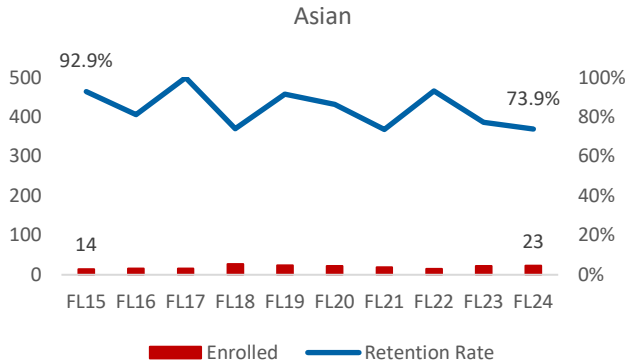
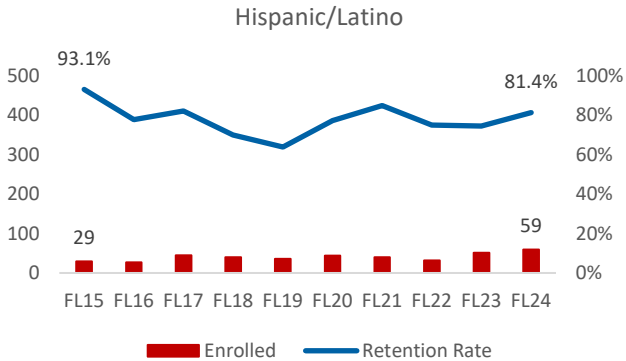
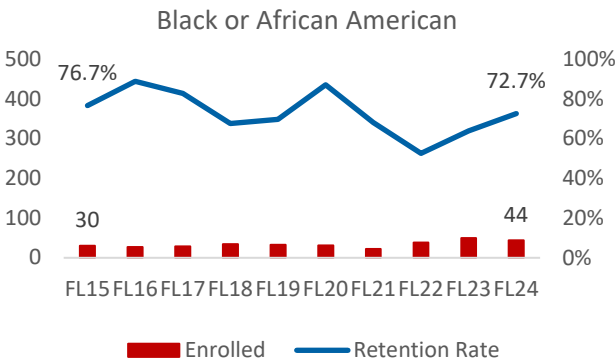
Notes:

The retention rates for Cadets of Color fluctuate yearly.

The groups Two or more Races/Other Ethnicity and Unknown/Non-resident Aliens are excluded from this chart.



# Retention by Race

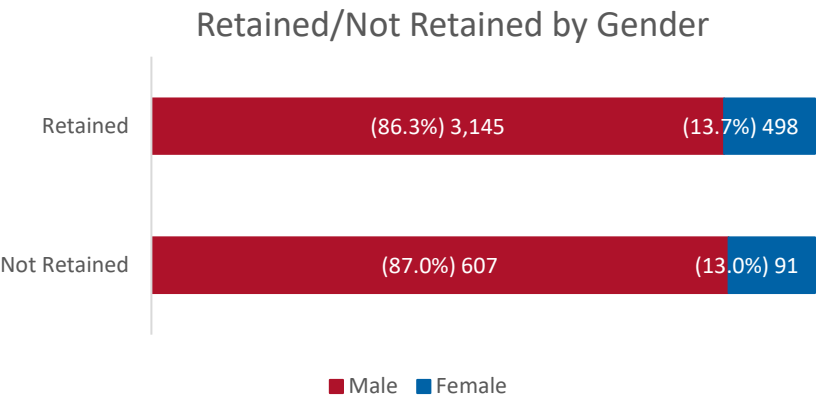


- Notes:
1. White cadets have the most stable trend of retention rate from year to year.
  2. The retention rates for Unknown/Non-resident Aliens changes dramatically due to a small population.

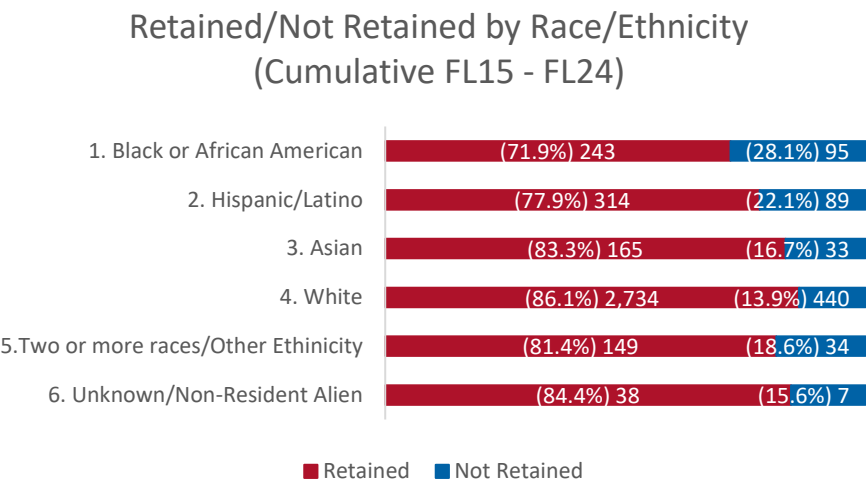


# Retention

## By Gender and Race/Ethnicity (FL15 - FL24 Cumulative )



On average, 13.7% of the cadets in the Retained group are female students; in the Not Retained group, the percentage is 13.0%.



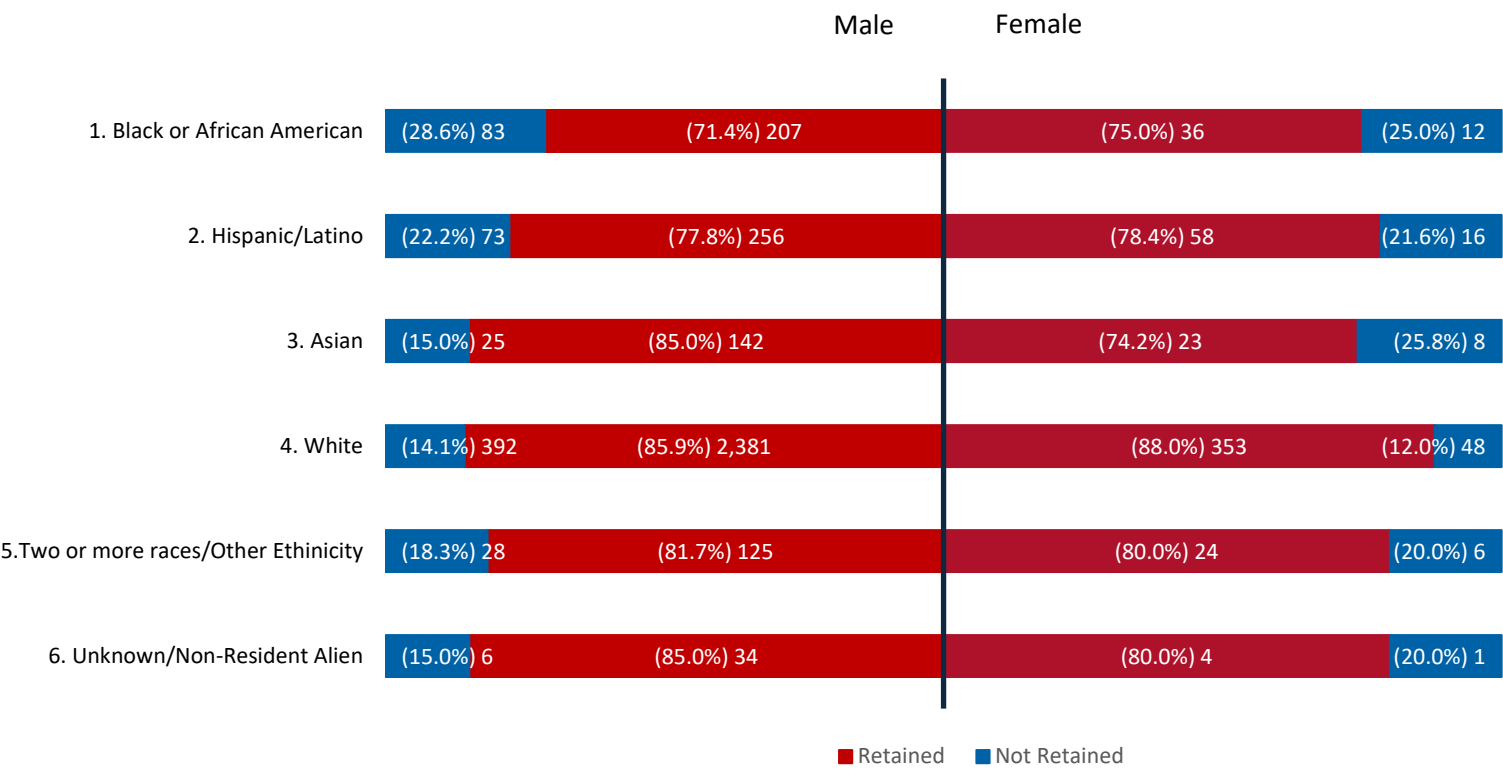
On average, Black or African American & Hispanic/Latino cadets have lower retention rates than other race/ethnicity groups.



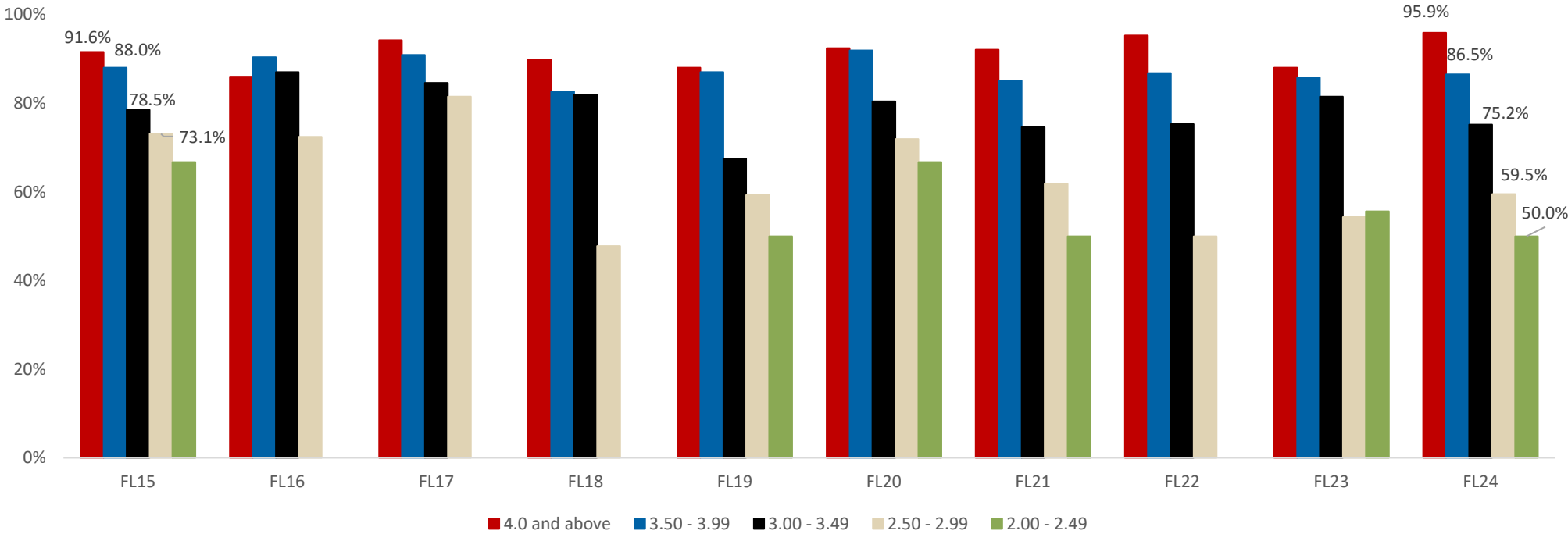


# Retention

By Gender and Race/Ethnicity  
(FL 15 – FL 24 Cumulative)



# Retention by HSGPA



HS GPA Range	FL15	FL16	FL17	FL18	FL19	FL20	FL21	FL22	FL23	FL24
1. 4.0 and above	91.6%	86.0%	94.2%	89.9%	88.0%	92.4%	92.1%	95.3%	88.0%	95.9%
2. 3.50 - 3.99	88.0%	90.4%	90.9%	82.7%	87.0%	91.9%	85.1%	86.8%	85.8%	86.5%
3. 3.00 - 3.49	78.5%	87.0%	84.6%	81.9%	67.5%	80.4%	74.6%	75.3%	81.5%	75.2%
4. 2.50 - 2.99	73.1%	72.4%	81.5%	47.8%	59.3%	71.9%	61.8%	50.0%	54.3%	59.5%
5. 2.00 - 2.49	66.7%	-	0.0%	-	50.0%	66.7%	50.0%	0.0%	55.6%	50.0%



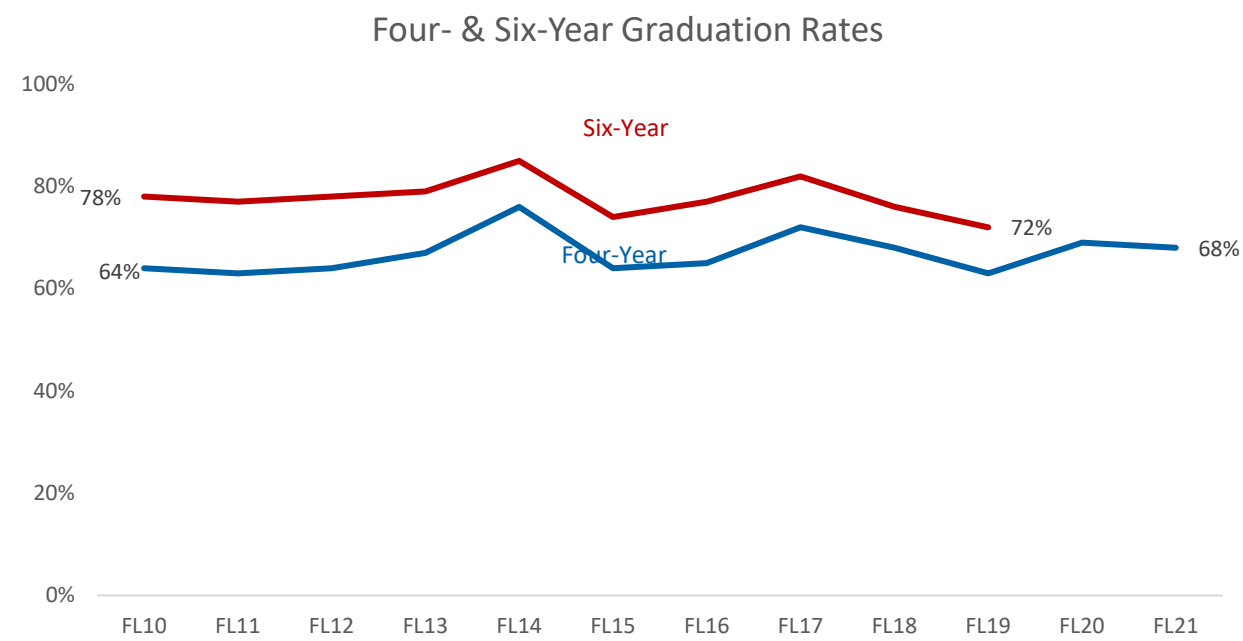




# GRADUATION RATES



# Graduation Rates



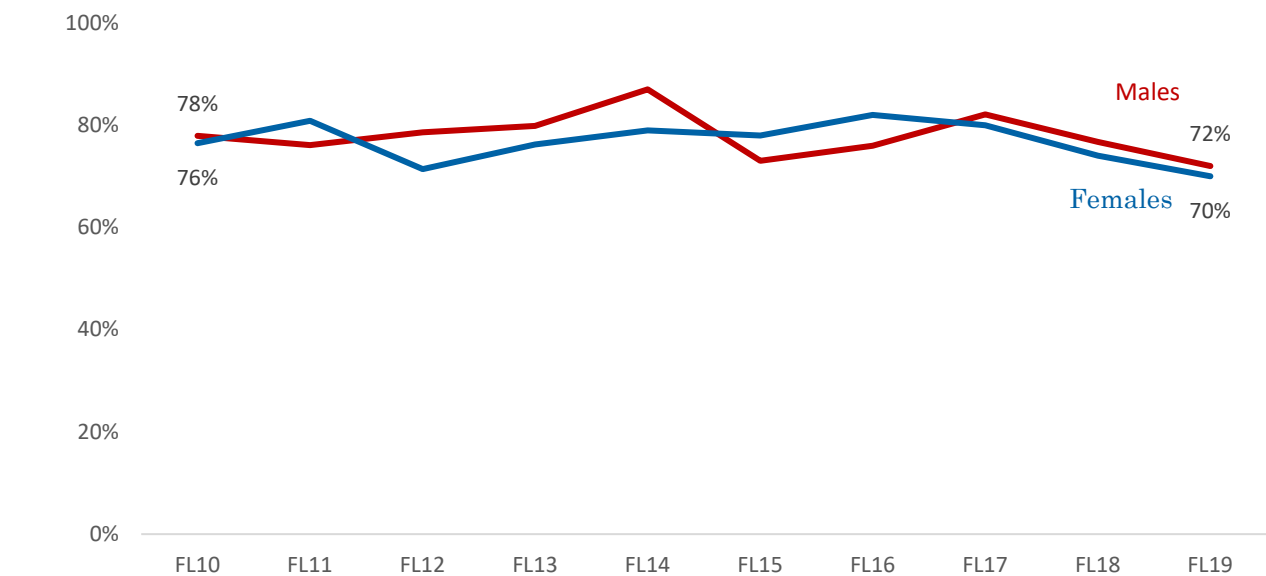
Four- & Six-Year Graduation Rates												
	FL10	FL11	FL12	FL13	FL14	FL15	FL16	FL17	FL18	FL19	FL20	FL21
Four-Year	64%	63%	64%	67%	76%	64%	65%	72%	68%	63%	69%	68%
Six-Year	78%	77%	78%	79%	85%	74%	77%	82%	76%	72%		

Note: Graduation rates are calculated based on the Fall Census Day headcount for First-Time, First-Year cadets.





# Six-Year Graduation Rates by Gender



Six-Year Graduation Rates by Gender										
	FL10	FL11	FL12	FL13	FL14	FL15	FL16	FL17	FL18	FL19
Males	78%	76%	79%	80%	87%	73%	76%	82%	77%	72%
Females	76%	81%	71%	76%	79%	78%	84%	80%	74%	70%

Note: Graduation rates are calculated based on the Fall Census Day headcount for First-Time, First-Year cadets.



# Graduation Rates by Gender and Race

**Female Six-Year Graduation Rates by Race/Ethnicity**

	FL10	FL11	FL12	FL13	FL14	FL15	FL16	FL17	FL18	FL19
American/Alaska Native	50%						100%		100%	100%
Asian	25%	100%	100%	0%	33%	100%	67%	67%	50%	100%
Black or African American	67%	67%	0%	100%	75%	83%	100%	67%	100%	67%
Hispanic/Latino	100%	80%	100%	80%	100%	75%	67%	86%	83%	30%
Hawaiian/Pacific Isl.										
Multiple Races		100%	50%	100%	100%	100%	100%	100%	75%	67%
Non-Resident Alien	50%		100%		100%				100%	
White	85%	81%	72%	75%	79%	76%	84%	80%	71%	77%

Note: Graduation rates are calculated based on the Fall Census Day headcount for First-Time, First-Year cadets.



# Graduation Rates by Gender and Race

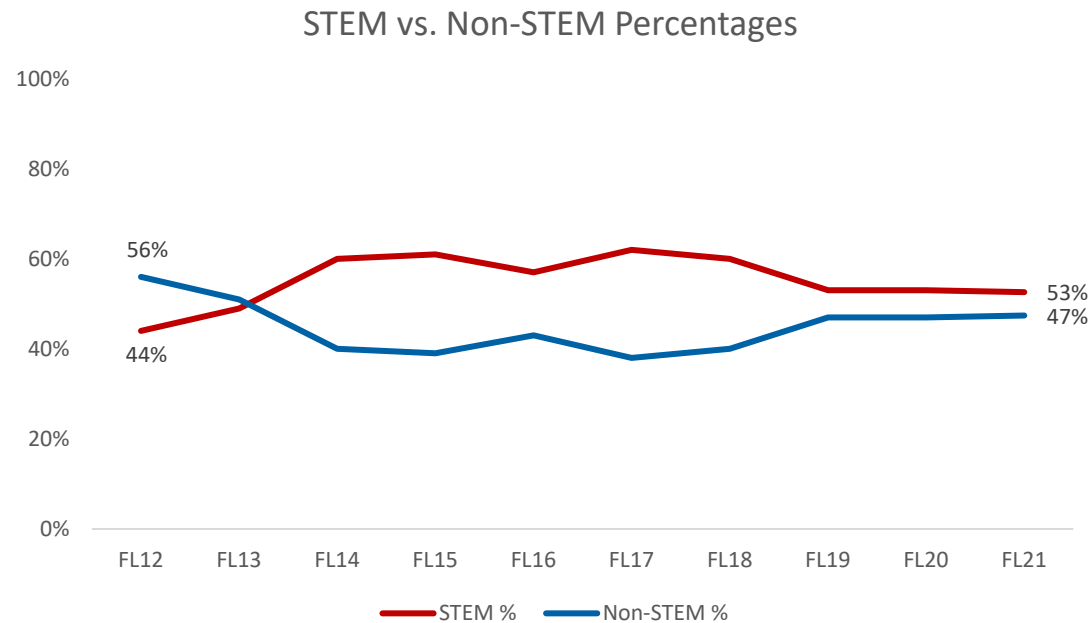
**Male Six-Year Graduation Rates by Race/Ethnicity**

	FL10	FL11	FL12	FL13	FL14	FL15	FL16	FL17	FL18	FL19
American/Alaska Native		50%	100%		100%		50%	0%	100%	33%
Asian	100%	88%	93%	73%	91%	78%	77%	92%	76%	82%
Black or African American	55%	42%	64%	75%	67%	46%	71%	50%	54%	60%
Hispanic/Latino	67%	79%	60%	71%	88%	68%	67%	82%	65%	62%
Hawaiian/Pacific Isl.		0%	100%	100%	67%		50%		100%	0%
Multiple Races	50%	100%	100%	67%	80%	100%	100%	67%	83%	55%
Non-Resident Alien	100%	75%	60%	75%	100%	67%	67%	100%	100%	100%
White	78%	78%	79%	81%	87%	73%	77%	85%	79%	75%

Note: Graduation rates are calculated based on the Fall Census Day headcount for First-Time, First-Year cadets.



# Four-Year Graduation Trends



Four-Year Graduation Trend: STEM vs. Non-STEM # and % at Graduation

Cohort Year	FL12	FL13	FL14	FL15	FL16	FL17	FL18	FL19	FL20	FL21
STEM #	127	139	205	167	168	187	185	150	171	152
STEM %	44%	49%	60%	61%	57%	62%	60%	53%	53%	53%
Non-STEM #	163	142	138	108	125	116	124	131	149	137
Non-STEM %	56%	51%	40%	39%	43%	38%	40%	47%	47%	47%

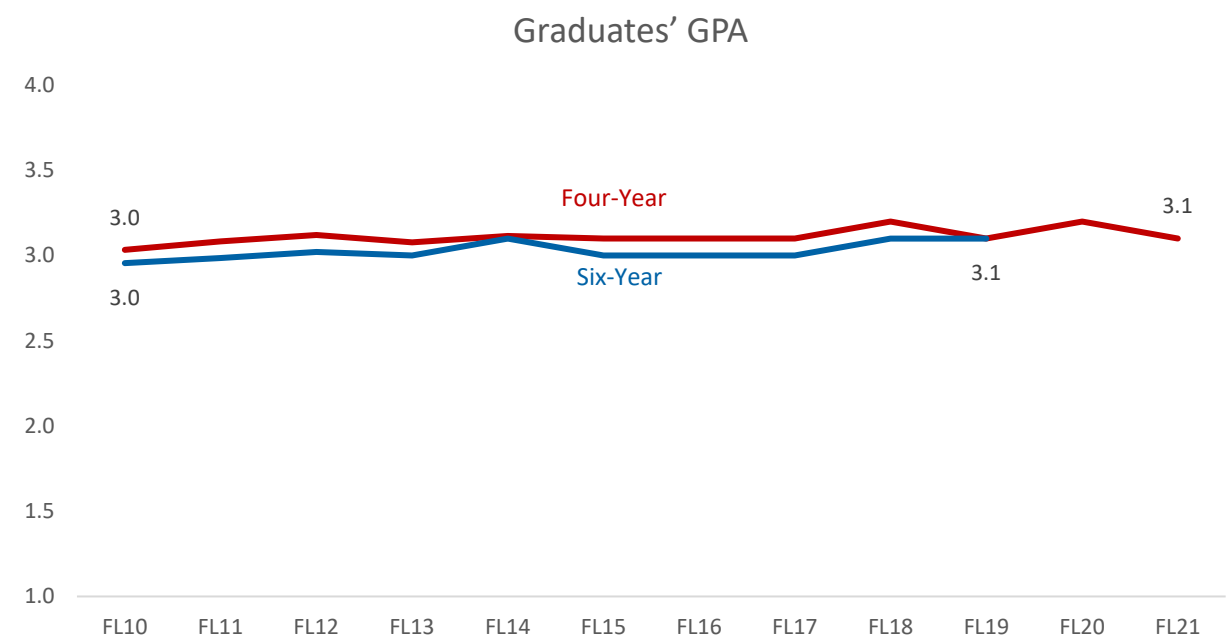
Note:

1. The Psychology major offered both BA and BS degrees until the 2014-15 academic year, when it transitioned to offering only a BS degree and was reclassified as a STEM major.
2. The data on this page is based on the number of full-time, first-time cadets who graduated within four years.





# Graduates' GPA



Graduates' GPA (Cohort-Based)												
	FL10	FL11	FL12	FL13	FL14	FL15	FL16	FL17	FL18	FL19	FL20	FL21
Four-Year	3.0	3.1	3.1	3.1	3.1	3.1	3.1	3.1	3.2	3.1	3.2	3.1
Six-Year	3.0	3.0	3.0	3.0	3.1	3.0	3.0	3.0	3.1	3.1		





# UNDERREPRESENTED CADETS /PELL RECIPIENTS



# SCHEV's Definition of URP

A URP cadet meets one or more of these criteria:

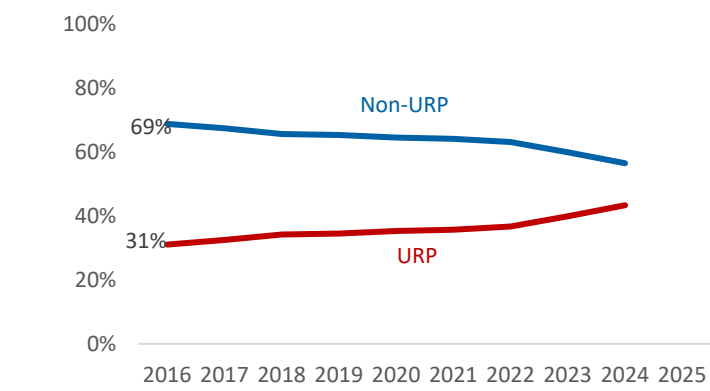
- Non-white US citizen and permanent residents.
- Degree-recipients receiving Pell grants at any time during the five years prior to degree award.
- Non-traditional students: age 25 or older at entry.
- Students from 34 Virginia localities with low associate and baccalaureate attainment rates.



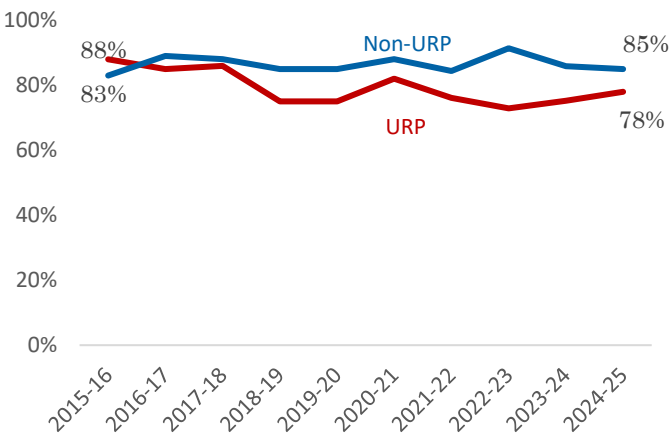


# URP Enrollment and Outcomes

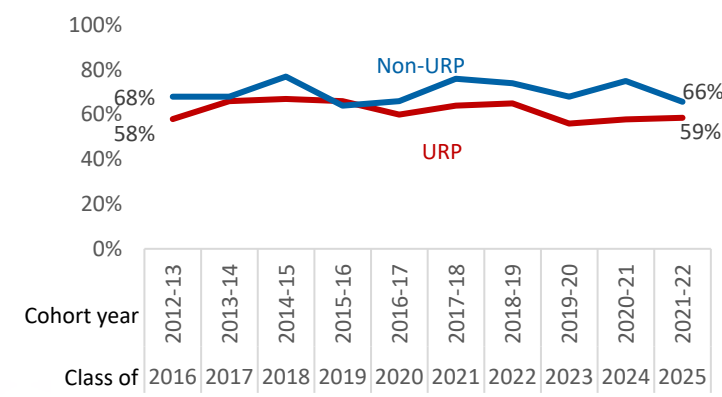
Underrepresented Cadet Enrollment Trends (Census Date)



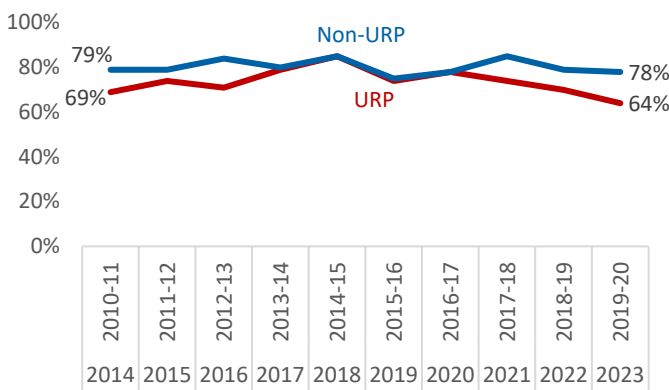
URP Retention Rates (FTF & Transfers)



URP Four-Year Grad Rates (FTF & Transfers)



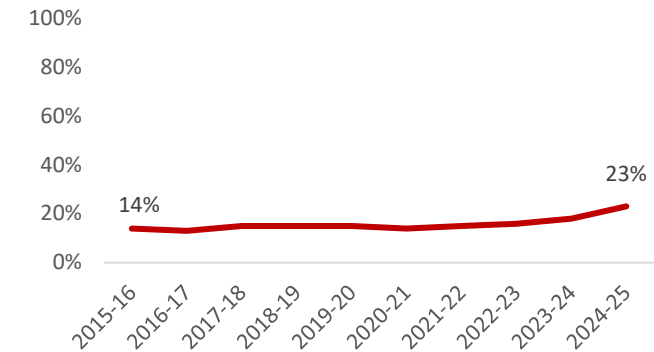
URP Six-Year Grad Rates (FTF & Transfers)



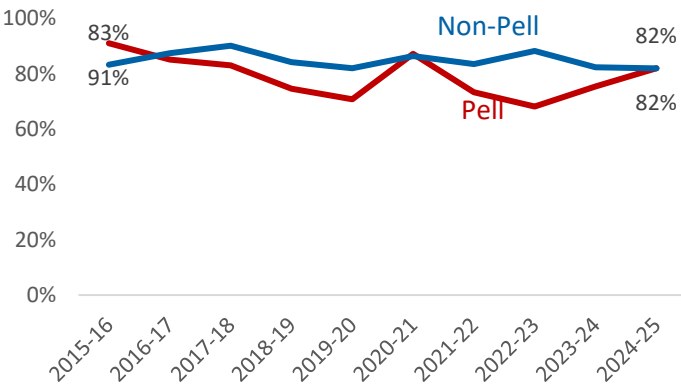


# Pell Recipients and Outcomes

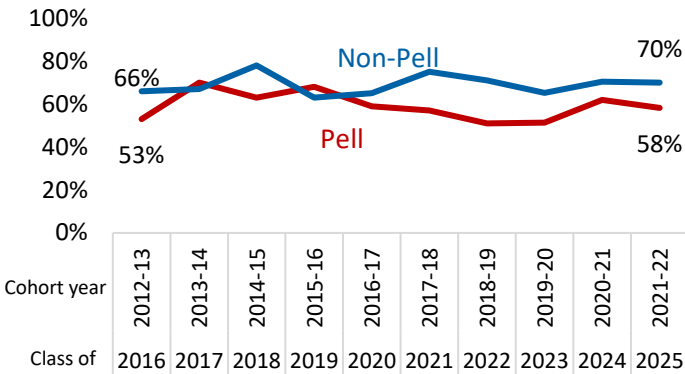
Pell Recipients



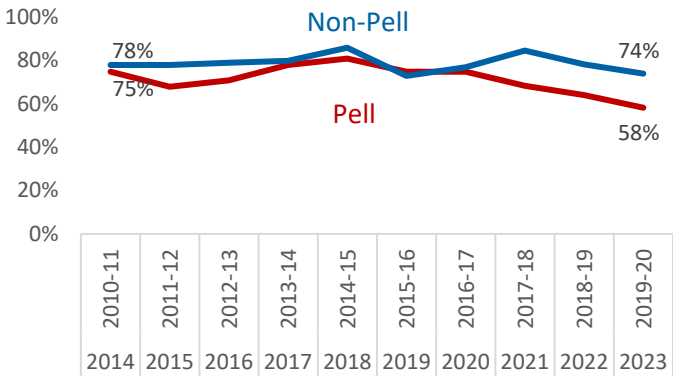
Pell Retention Rates



Pell Four-Year Grad Rates



Pell Six-Year Grad Rates



- Notes:
1. Pell Recipients chart: Represents the percentage of total Pell recipients among all cadets as of the Fall Census Date.
  2. Retention and Graduation Rates: Charts reflect first-time, full-time cadets.
  3. Retention Rates: Indicate the percentage of freshmen who return for their sophomore year.

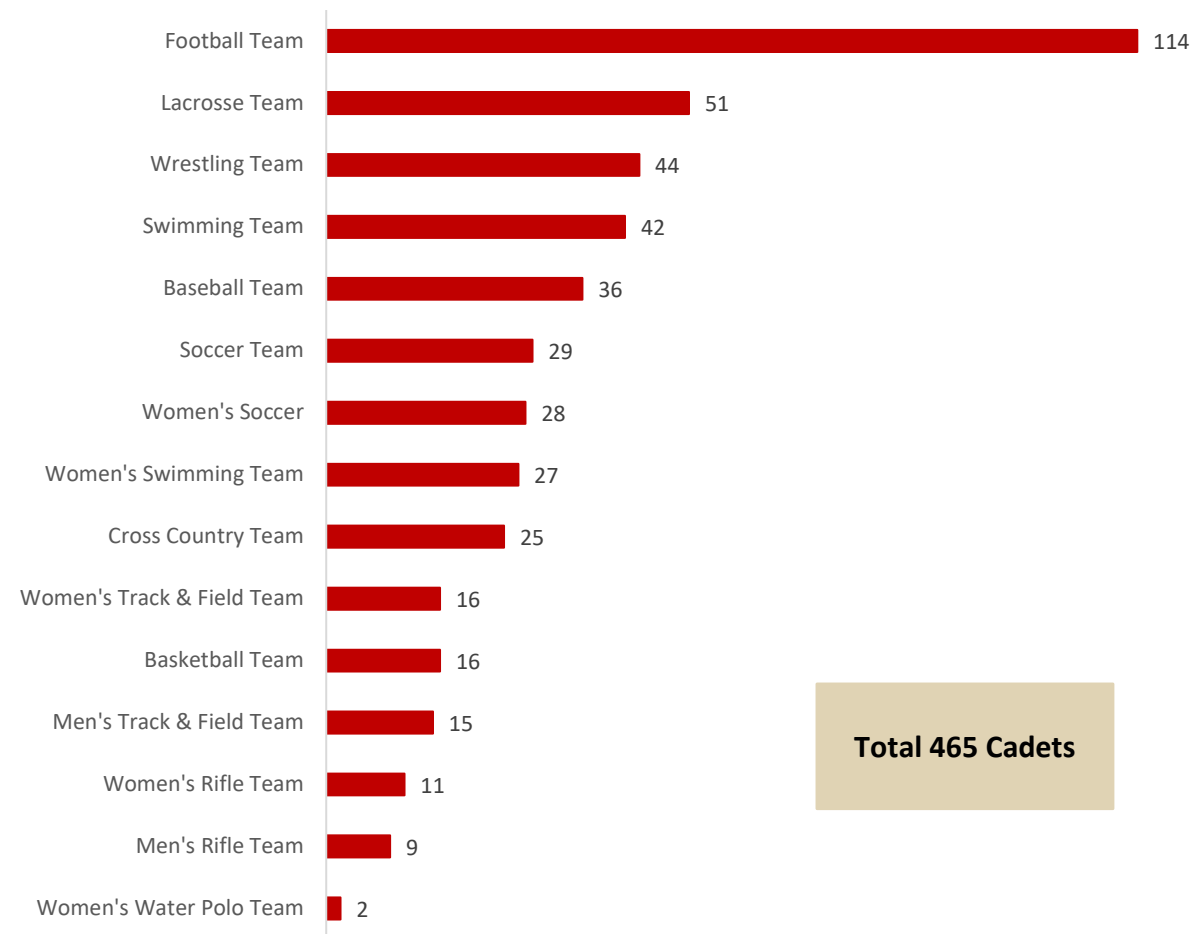




# ATHLETICS



# NCAA Teams



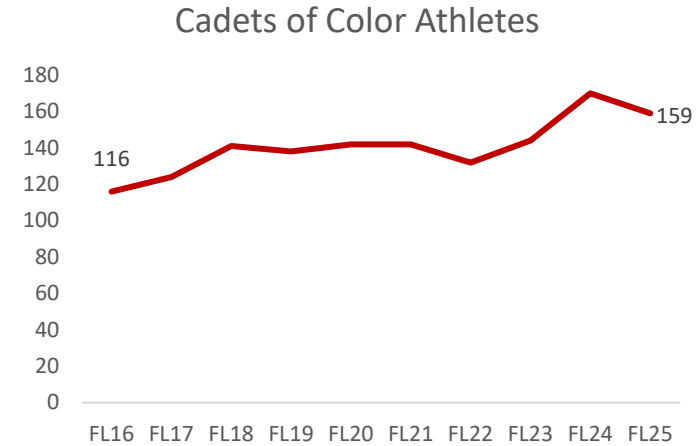
Notes:  
NCAA Athletes: 465  
Non-NCAA Athletes (not officially recognized as NCAA athletes): 7.  
Data as of Census Day Headcount (Fall 2025)



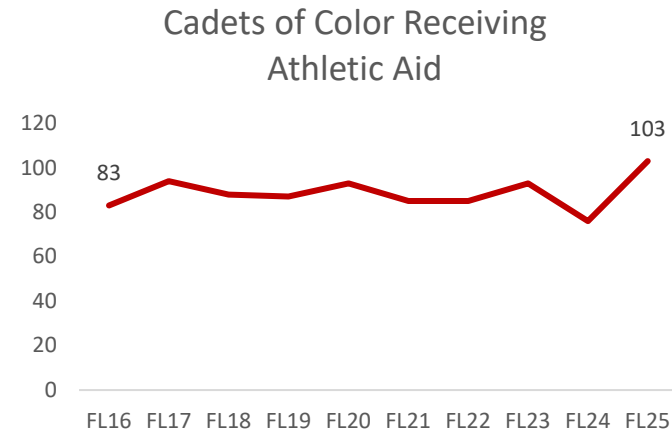


# Athlete Enrollment

Term	Cadets of Color Athletes
FL16	116
FL17	124
FL18	141
FL19	138
FL20	142
FL21	142
FL22	132
FL23	144
FL24	170
FL25	159

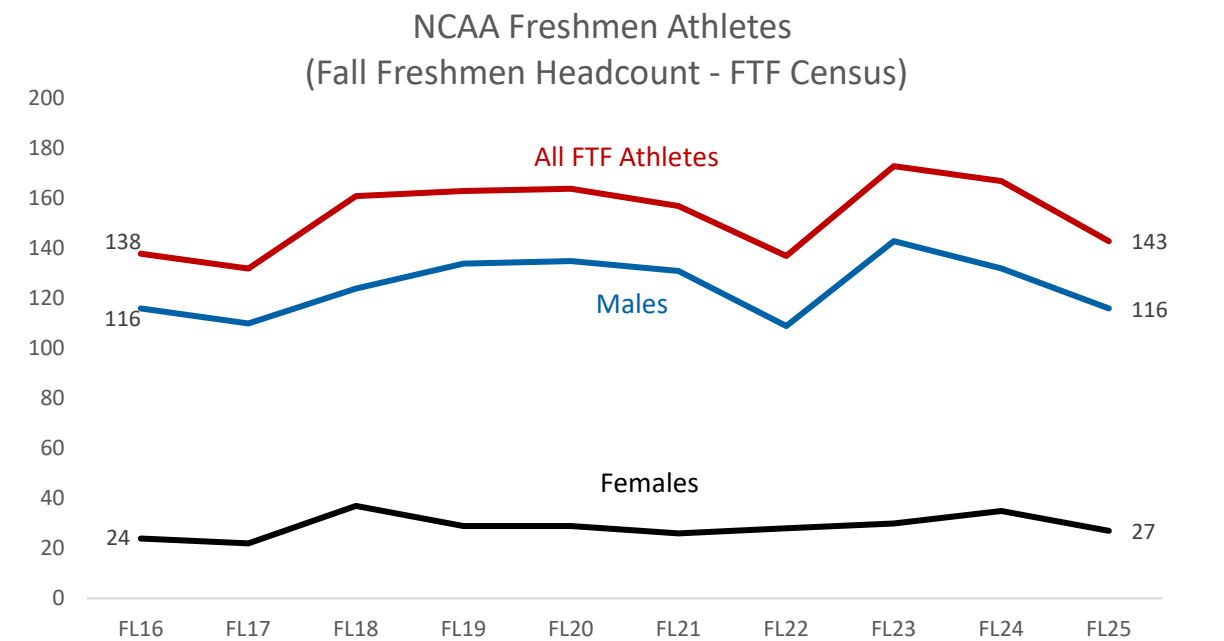


Term	Cadets of Color Receiving Athletic Aid
FL16	83
FL17	94
FL18	88
FL19	87
FL20	93
FL21	85
FL22	85
FL23	93
FL24	76
FL25	103





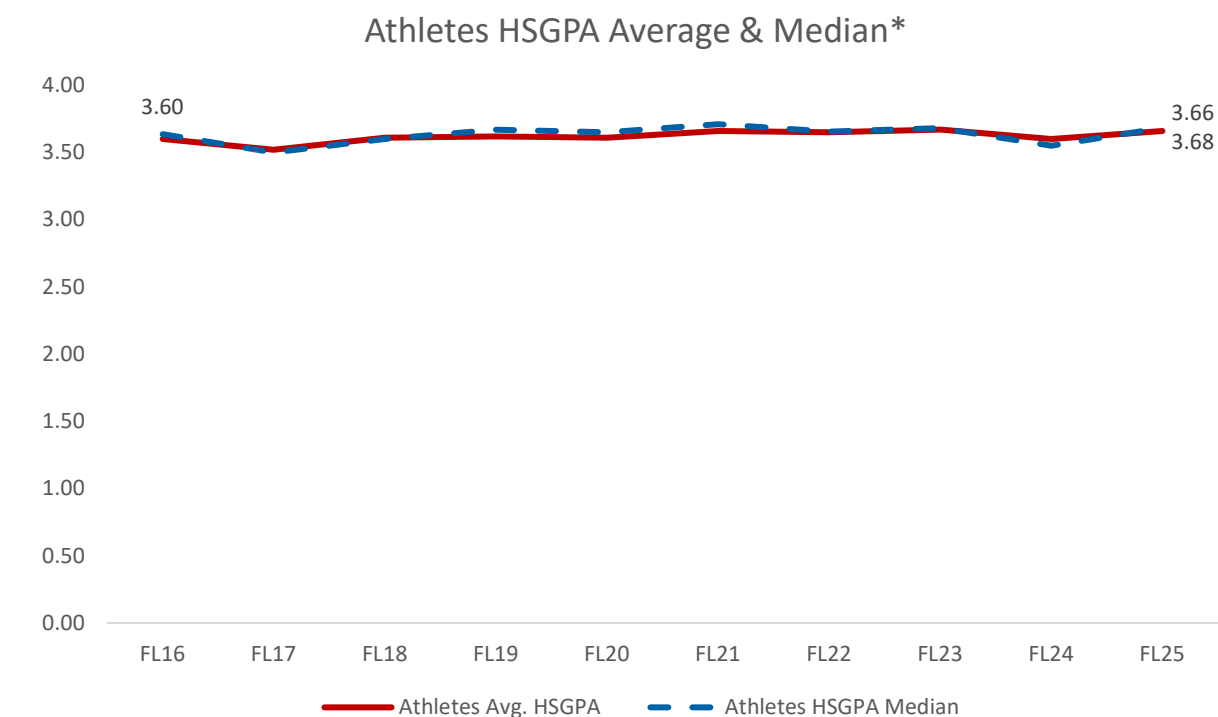
# Athlete Enrollment



	FL16	FL17	FL18	FL19	FL20	FL21	FL22	FL23	FL24	FL25
Female	24	22	37	29	29	26	28	30	35	27
Male	113	110	124	134	135	131	109	143	132	116
Athletes of Color	31	46	55	49	41	38	50	62	63	57
White	107	86	106	114	123	119	87	111	104	86



# Athlete High School GPA

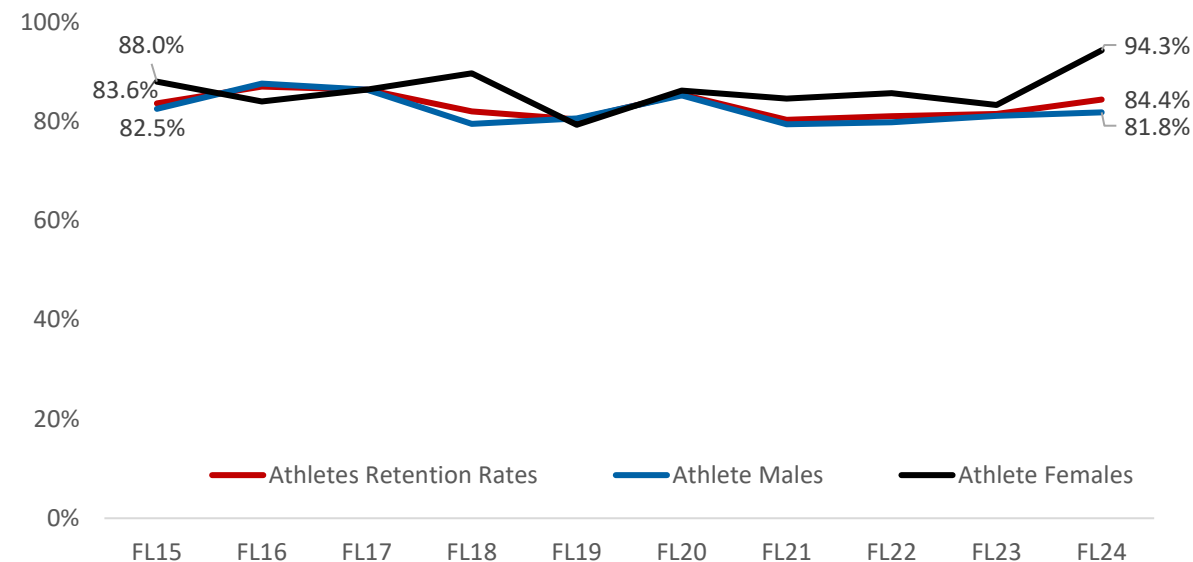


Notes:  
1. HSGPA based on FTF matriculates at census date.  
2. \*Average is the mathematical mean of a group of numbers while the median is the middle number in a set of data. Large differences between the two could indicate skewness or the deviation and distribution of individual scores in relation to the mean.

	FL16	FL17	FL18	FL19	FL20	FL21	FL22	FL23	FL24	FL25
Athletes Avg. HS GPA	3.6	3.52	3.61	3.62	3.61	3.66	3.65	3.67	3.60	3.66
Athletes HS GPA Median	3.64	3.50	3.60	3.67	3.65	3.71	3.66	3.68	3.55	3.68



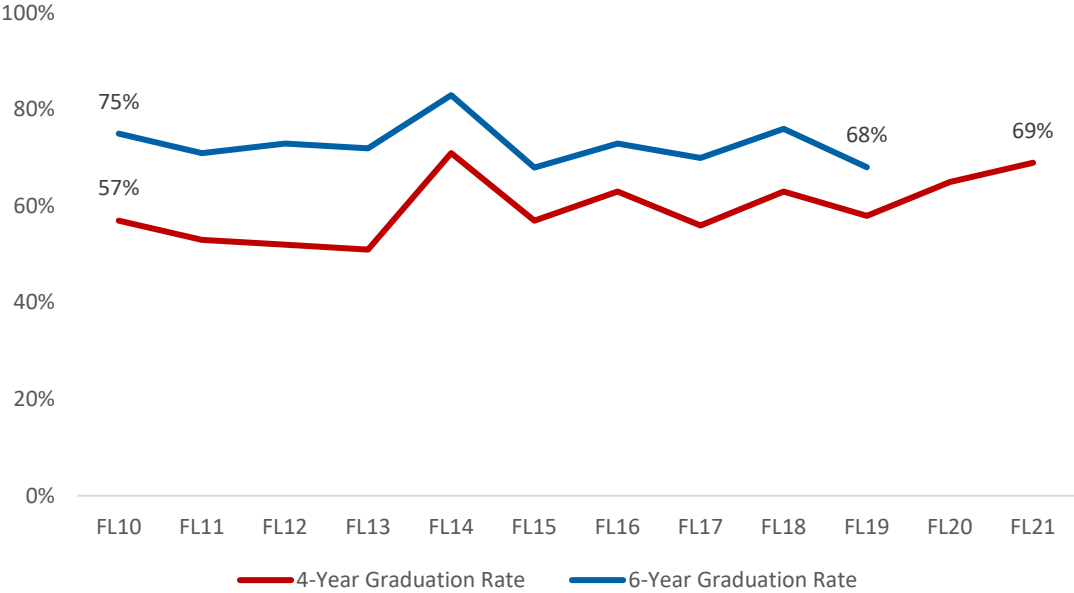
# Athlete Retention Rates



	FL15	FL16	FL17	FL18	FL19	FL20	FL21	FL22	FL23	FL24
Athletes Retention Rates	83.6%	87.0%	86.4%	82.0%	80.4%	85.4%	80.3%	81.0%	81.5%	84.4%
Athlete Males	82.5%	87.6%	86.4%	79.5%	80.6%	85.2%	79.4%	79.8%	81.1%	81.8%
Athlete Females	88.0%	84.0%	86.4%	89.7%	79.3%	86.2%	84.6%	85.7%	83.3%	94.3%



# Athlete Graduation Rates



Four-Year & Six-Year Graduation Rates for Athletes by Cohort

	FL10	FL11	FL12	FL13	FL14	FL15	FL16	FL17	FL18	FL19	FL20	FL21
4-Year Graduation Rate	57%	53%	52%	51%	71%	57%	63%	56%	63%	58%	65%	69%
6-Year Graduation Rate	75%	71%	73%	72%	83%	68%	73%	70%	76%	68%		





# Graduation Rates by Sport

## Six-Year Graduation Rates

Sport	FL10	FL11	FL12	FL13	FL14	FL15	FL16	FL17	FL18	FL19
<b>Females</b>										
Cross Country/Track	75%	86%	43%	100%	79%	78%	100%	100%	92%	33%
All Other Sports	85%	78%	65%	79%	89%	75%	74%	71%	81%	78%
<b>Males</b>										
Basketball	33%	50%	60%	67%	67%	25%	43%	57%	67%	67%
Football	82%	66%	77%	77%	78%	74%	81%	54%	67%	71%
Baseball	90%	75%	80%	62%	86%	67%	60%	85%	77%	50%
Cross Country/Track	75%	60%	76%	59%	78%	44%	91%	64%	88%	75%
All Other Sports	69%	74%	76%	72%	88%	69%	69%	72%	71%	69%





# COMMISSIONING



# Commissioning Profile, AY2025-26



Army Commissioning: 187  
Army Seeking Commission: 480  
Army Non-Commissioning: 332  
Total: 999



Marine Commissioning: 12  
Marine Seeking Commission : 125  
Total: 137



Navy Commissioning: 32  
Navy Seeking Commission: 156  
Total: 188



Air Force Commissioning: 26  
Air Force Seeking Commission : 130  
Total: 156

**1,480 cadets  
participate in ROTC.**

Note:

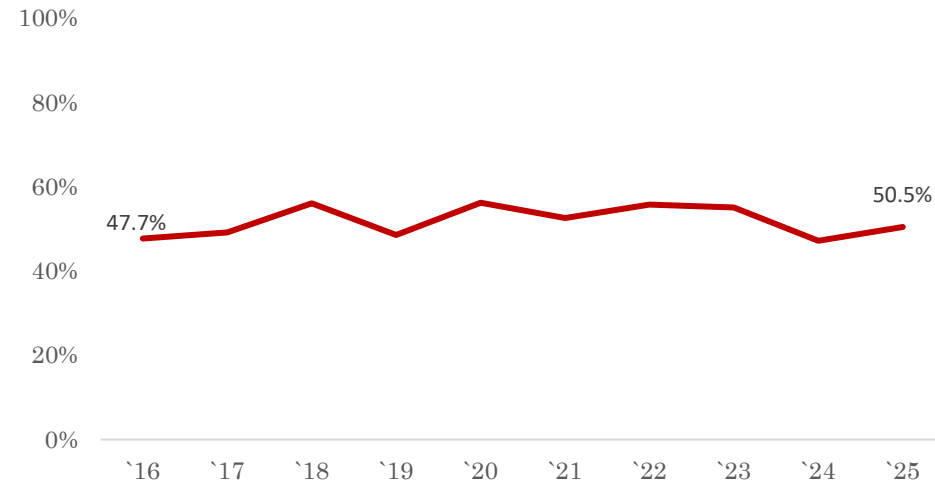
1. Data was calculated as of November 2025.
2. The Census Day headcount for Fall 2025 is 1496.





# Commissioning

% Graduates Commissioning



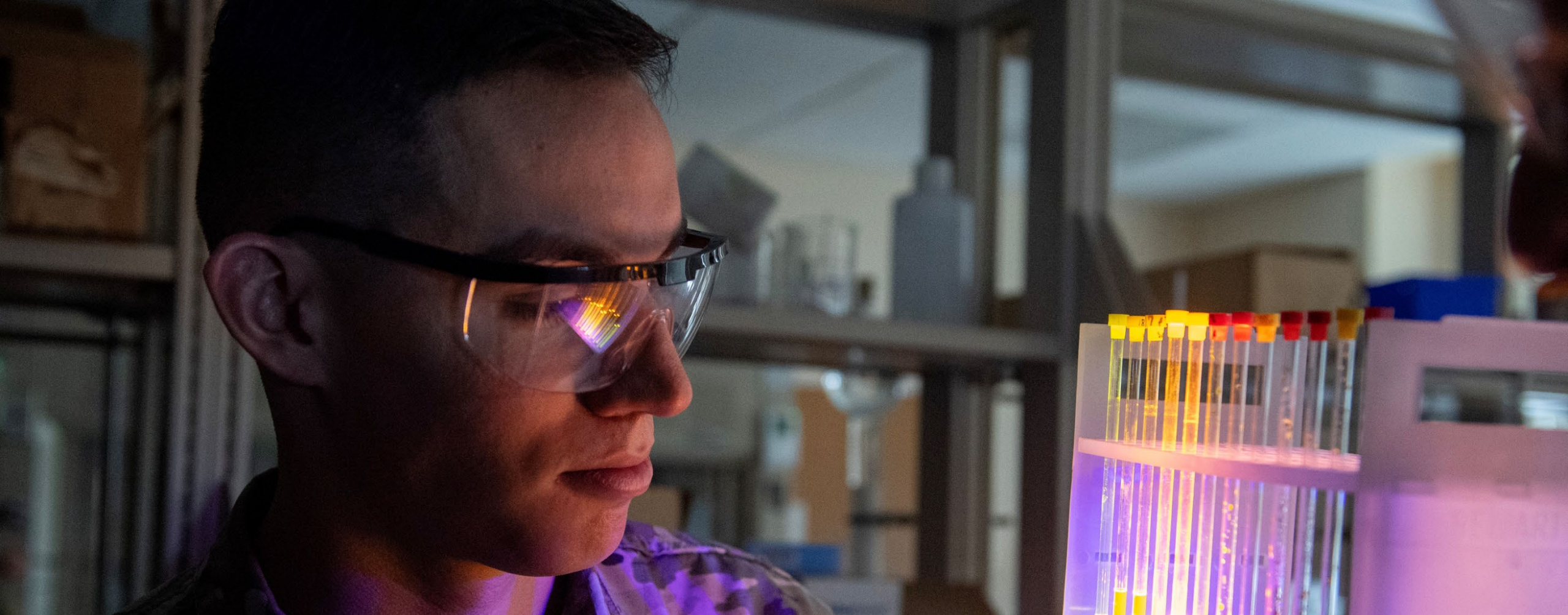
Matriculating Class	'16	'17	'18	'19	'20	'21	'22	'23	'24	'25
Foreign	3	4	4	5	5	4	3	4	5	5
Coast Guard	2	0						5	2	1
Navy/Marine Corps	48	45	57	35	49	46	48	32	52	32
Air Force	10	14	37	24	24	35	32	19	8	21*
Army	117	119	133	103	125	117	104	108	95	102
# Commissioning	180	182	231	167	203	202	187	168	162	161
# Graduates	377	370	412	344	361	384	335	305	343	318
% Graduates Commissioning	47.7%	49.2%	56.1%	48.5%	56.2%	52.6%	55.8%	55.1%	47.2%	50.1%

Commissioning data is organized by matriculating class, not by graduation date.

\* Includes 20 (Air Force) and 1 (Space Force) commissions.







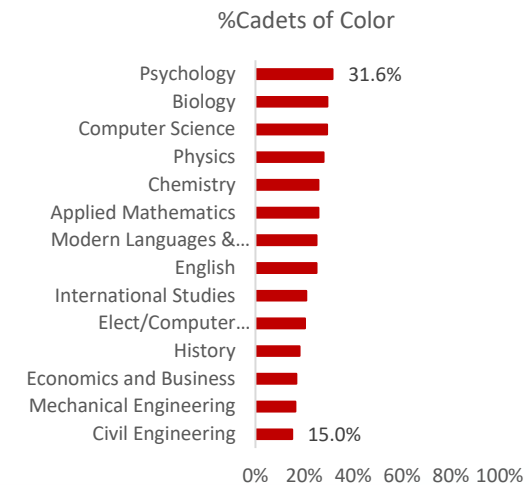
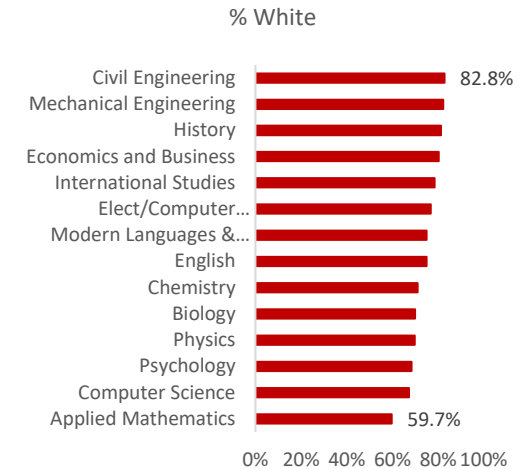
# MAJORS, MINORS, & CONCENTRATIONS



# Degrees Conferred, Sept. 2020 – May 2025

## Degrees Conferred

Major	Cadets of Color	White	Non-Resident Alien & Unknown	% Cadets of Color	% White	% Non-Resident Alien & Unknown
Psychology	62	134		31.6%	68.4%	0.0%
Biology	45	107	1	29.4%	69.9%	0.7%
Computer Science	34	78	4	29.3%	67.2%	3.4%
Physics	12	30	1	27.9%	69.8%	2.3%
Applied Mathematics	16	37	9	25.8%	59.7%	14.5%
Chemistry	8	22	1	25.8%	71.0%	3.2%
English	24	72		25.0%	75.0%	0.0%
Modern Languages & Cultures	12	36		25.0%	75.0%	0.0%
International Studies	56	211	2	20.8%	78.4%	0.7%
Elect/Computer Engineering	14	53	2	20.3%	76.8%	2.9%
History	35	157	1	18.1%	81.3%	0.5%
Economics and Business	39	186	7	16.8%	80.2%	3.0%
Mechanical Engineering	23	116	2	16.3%	82.3%	1.4%
Civil Engineering	34	188	5	15.0%	82.8%	2.2%



# Degrees Conferred by Major

Major		2015-16	2016-17	2017-18	2018-19	2019-20	2020-21	2021-22	2022-23	2023-24	2024-25	Grand Total
Applied Mathematics		6	14	23	11	16	12	14	6	18	12	132
Biology		28	40	39	34	38	36	30	27	30	30	332
Chemistry		10	12	13	7	7	6	9	7	4	5	80
Civil Engineering		70	61	59	53	50	51	57	42	40	37	520
Computer Science	Computer Science (CS)	6	16	22	27	20	25	24	18	22	22	202
	Cybersecurity Track (CYS)									2		2
	Information Technology Track (CIT)									1	1	2
	Theory and Application Track (CST)									1		1
Economics and Business		58	68	56	48	50	48	43	50	46	45	512
Elect/Computer Engineering		7	7	14	17	12	18	17	11	11	12	126
English		15	12	20	7	10	21	22	17	23	13	160
History		36	30	29	24	41	33	33	43	44	40	353
International Studies		65	57	62	53	48	55	42	55	55	62	554
Mechanical Engineering		28	23	38	20	23	41	30	19	33	18	273
Modern Languages & Cultures		12	5	11	11	7	7	17	7	9	8	94
Physics		7	7	12	14	11	10	7	11	8	7	94
Psychology		26	29	29	25	39	39	39	34	43	41	344
Grand Total		374	381	427	351	372	402	384	347	390	353	3781

Degrees Conferred by Primary Major





# Academic Minors/Concentrations by Graduates

Minors/Concentrations	2015-16	2016-17	2017-18	2018-19	2019-20	2020-21	2021-22	2022-23	2023-24	2024-25	Grand Total
Arabic Minor	6	4	5	4	1	7	4	2	1	1	35
Art Hist. & Visual Cult. Minor	1	2	1	2	4	1	1				12
Asian Studies Minor	4	6	6	6	3	5	9	3	3	1	46
Astronomy Minor		1	4	5	3	1	2	7	2	3	28
Business Minor	4	1	3	1		1	4		2	1	17
Chemistry Minor	1	4	5	4	3	3	4	4	2	1	31
Chinese Minor		1	5		2	8	2	1	2	4	25
CIS Computing Track	6	3	5	8	6	5	1				34
CIS Informatics Track		11	17	19	14	19	1				81
Computer & Info Sciences Minor		2	2	1	1		1		2		9
Computer Eng. Minor	1		2			1		1	1	2	8
Conc.-Aerospace Engineering	7	2	3	2	5	13	6	2	5	2	47
Conc-Art Hist. & Visual Cult.	1	4	4		2	4	5	2	5	3	30
Conc-Biochem & Mol. Biology	7	8	4	2	3		1				25
Conc-ECOS	3	5	2	2	4	2	1				19
Conc-Fin Management	9	8	10	8	5	1	2				43
Conc-Financial Analysis						1	4	4	3	2	14
Conc-Global Management	5	8	11	11	7	4	2	1			49
Conc-Global Business							2	2	2	2	8
Conc-Literary Studies	12	10	13	6	8	15	15	14	16	8	117
Conc-Military History	7	9	11	10	18	4	5	11	3	2	80
Conc-Nuclear Engineering	11	7	11	13	2	13	9	9	6	4	85
Conc-Philosophy	4	3	5	1	5	7	8	6	10	1	50
Conc-Rhetoric & Writing	10	10	15	8	8	16	15	16	18	7	123
Conc-Writing	1										1
Cybersecurity Minor				2	3		3	4	6	6	24
Decision Analytics Conc									5	6	11

Note: Some graduates have multiple minors.





# Academic Minors/Concentrations by Graduates, Cont.

Minors/Concentrations	2015-16	2016-17	2017-18	2018-19	2019-20	2020-21	2021-22	2022-23	2023-24	2024-25	Grand Total
Economics Minor	3	3	2	1	3	3	3		3	1	22
English Minor											0
Exercise Science Minor	5	13	6	6	12	7	10	10	6	6	81
French Minor	6	4	4	1			3	4	7	3	32
German Minor	8	4		1	3	1	2	4		4	27
History Minor	5	9	8	6	4	2	3	3	7	2	49
Int'l Studies Minor	2	6	4	3	9	3	5	5	5	4	46
Japanese Minor	1										1
Leadership Studies Minor	2	8	5	3	10	3	9	5	7	10	62
Literary Studies Minor	2	2	5	2	9	1	10	3	4	6	44
Mathematics Minor	33	32	42	41	28	40	32	29	42	24	343
MC Minor-Arabic & French											0
Middle Eastern Studies Minor	5	3	3	3	1	1		1	2	2	21
Military History Minor	3		2				4		1	5	15
National Security Minor	10	6	9	10	9	9	8	10	11	8	90
Modern Languages Minor										1	1
Nuclear Concentration									6	2	8
Nuclear Eng.			1	1	1				3	1	7
Philosophy Minor	2	2	5	5	5	1	3		6	5	34
Physics Minor	8	4	13	8	6	15	18	14	15	8	109
Psychology Minor	4	4	7	5	4	3	7	3	2	3	42
Rhetoric and Writing Minor	3	3	2	8	11		3	2	3	2	37
Spanish & French Minor	1										1
Spanish Minor	15	6	21	8	12	8	12	8	5	8	103
Track-Chem Biochem/Pre-Med	3	5	4	3	3	1	3	3	2	1	28
Track-Chemistry Research			9	4	4	4	6	4	2	3	36
Grand Total	221	223	296	234	241	233	248	197	233	392	2519

Note: Some graduates have multiple minors.





# ACADEMIC HONORS



# Honors Program

Academic Honors Program (2025-26)	Participants
Applied Mathematics	6
Biology	6
Civil Engineering	11
Chemistry	3
Computer & Information Sciences	6
Economics & Business	10
Electrical Engineering	9
English	7
History	9
International Studies	28
Mechanical Engineering	14
Modern Languages & Cultures	3
Physics	4
Psychology	6
Total	122







# PROGRAMS ABROAD





# Programs Abroad

Spring 2025	# Participants	Summer 2025	# Participants
Chile	1	France	8
Czech Republic	1	Italy	14
Germany	1	Poland	19
Greece	8	Spain	23
Italy	5	Taiwan	8
Japan	1	United Kingdom	6
Lithuania	1	Italy Internship	2
Serbia	2		
Spain	4		
United Kingdom	1		
Total	25		80





# UNDERGRADUATE RESEARCH



# Undergraduate Research

## VMI Center for Undergraduate Research

- VCUR supported travel for 44 cadets to either conduct undergraduate research in the field or present their research at external conferences.
- VCUR supported purchase of research supplies for 15 cadets.

Department	SURI '25 Funded
Applied Mathematics	6
Biology	5
Civil Engineering	2
Chemistry	4
Computer Information Science	0
Economics & Business	0
Electrical & Computer Engineering	0
English	2
History	2
Human Performance & Wellness	3
International Studies	1
Mechanical Engineering	7
Modern Languages & Cultures	0
Psychology	3
Physics	1
non-VMI	0
Total	34







# TUITION & FEES





# Tuition and Fees

2025-2026

Tuition and Fees	Virginians	Non-Virginians	International
Tuition	\$10,368	\$41,960	\$41,960
Housing (Room)	\$3,488	\$3,488	\$3,488
Food (Board)	\$8,162	\$8,162	\$8,162
<b>Auxiliary Fees</b>			
Medical	\$610	\$610	\$610
Athletic	\$4,186	\$4,186	\$4,186
Cadet Facilities/Activities	\$2,602	\$2,602	\$2,602
<b>Total Tuition and Fees</b>	<b>\$29,416</b>	<b>\$61,008</b>	<b>\$61,008</b>
<b>Quartermaster Charge</b>			
Laundry / Pressing	\$498	\$498	\$498
Haircuts	\$334	\$334	\$334
Uniforms / UMA Activities	\$2,758	\$2,758	\$2,758
<b>Total (Tuition, Fees, Quartermaster Charge)</b>	<b>\$33,016</b>	<b>\$64,608</b>	<b>\$64,608</b>
Health Insurance (International Cadets Only)			\$1,300*
<b>Total Cost of Attendance</b>	<b>\$33,016</b>	<b>\$64,608</b>	<b>\$65,908</b>



# Tuition and Fees

## Explanation of Fees

### Housing and Food (Room and Board)

Housing and Food are required since all cadets live in barracks and are provided 21 meals per week.

### Auxiliary Fees

Costs of medical services, cadet facilities, and activities.

### Quartermaster Charges

Covers haircuts and uniforms. Uniforms are state property and must be returned to the Institute. Qualified cadets enrolled or under contract in the ROTC program receive a uniform allowance directly from the federal government which helps defray the cost of cadet uniforms.

### Deposit

The Deposit covers property damages, lost property, and unpaid obligations to VMI. The deposit shall equal \$300 and be paid by all incoming and returning cadets. VMI returns this deposit, less any deductions for damages or unpaid obligations and without interest, upon graduation of the cadet or the termination of the cadetship.

### Health Insurance

Health Insurance is a required fee for all International cadets. The amount included is an estimate for the 2024-25 academic year. Please contact the Office of International Programs for specific coverage information.

### Direct Costs

Direct Costs include VMI billable expenses. Tuition, fees, housing, and food are VMI's Direct Costs.

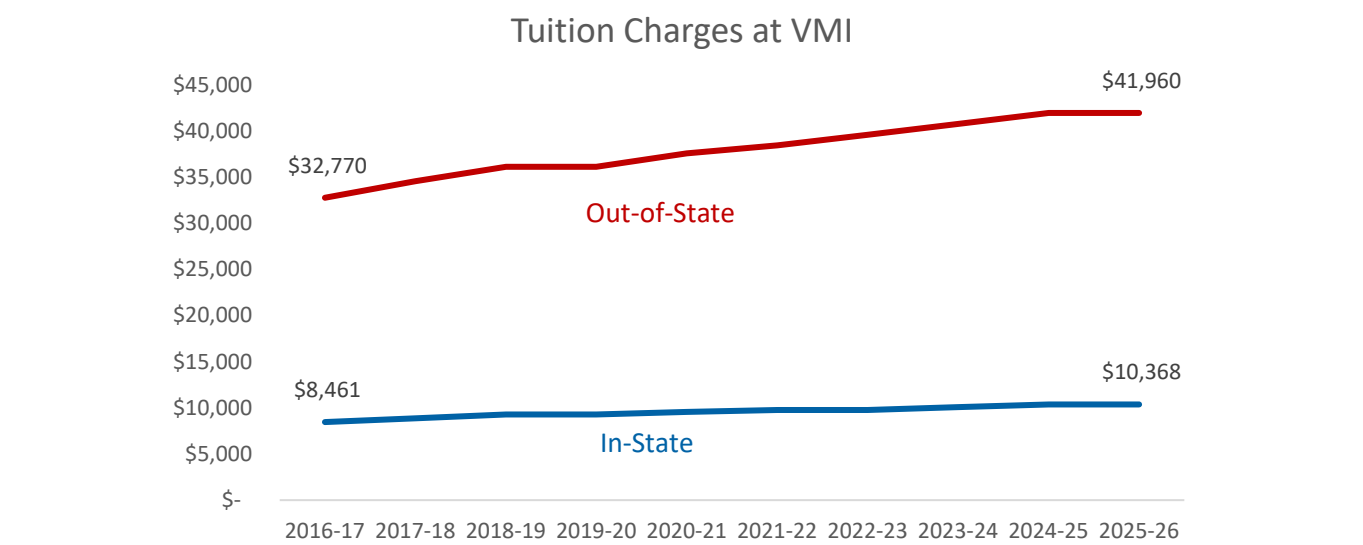
### Indirect Costs for 2024-25

In-state cadets should plan on \$3,350 in Indirect Costs. Indirect Costs include other expenses you may incur, including approximately: \$1,200 books, source materials, supplies and equipment; \$1,700 personal expenses (potential loan origination fees); and \$450 transportation.

Out of state cadets should plan on an estimated \$4,300 in Indirect Costs. Indirect Costs include other expenses you may incur, including approximately: \$1,200 books, source materials, supplies and equipment; \$1,700 personal expenses (potential loan origination fees); and \$1,400 transportation.



# Tuition and Fees



In-State					Out-of-State				
	Tuition	Mandatory Non-E&G	Average Room & Board	Total		Tuition	Mandatory Non-E&G	Average Room & Board	Total
2016-17	\$8,461	\$9,031	\$8,968	\$26,460	2016-17	\$32,770	\$9,031	\$8,968	\$50,769
2017-18	\$8,884	\$9,330	\$9,236	\$27,450	2017-18	\$34,572	\$9,330	\$9,236	\$53,138
2018-19	\$9,284	\$9,578	\$9,482	\$28,344	2018-19	\$36,128	\$9,578	\$9,482	\$55,188
2019-20	\$9,284	\$9,834	\$9,766	\$28,884	2019-20	\$36,128	\$9,834	\$9,766	\$55,728
2020-21	\$9,562	\$9,648	\$10,060	\$29,270	2020-21	\$37,572	\$9,648	\$10,060	\$57,280
2021-22	\$9,782	\$9,888	\$10,362	\$30,032	2021-22	\$38,436	\$9,888	\$10,362	\$58,686
2022-23	\$9,782	\$10,132	\$10,674	\$30,588	2022-23	\$39,590	\$10,132	\$10,674	\$60,396
2023-24	\$10,076	\$10,408	\$10,990	\$31,474	2023-24	\$40,778	\$10,408	\$10,990	\$62,176
2024-25	\$10,368	\$10,678	\$11,310	\$32,356	2024-25	\$41,960	\$10,678	\$11,310	\$63,948
2025-26	\$10,368	\$10,998	\$11,650	\$33,016	2025-26	\$41,960	\$10,998	\$11,650	\$64,608





# FINANCIAL AID





# Financial Aid

In 2024-25, over 84% of the Corps of Cadets receives some form of financial aid (Federal Loans, ROTC, Athletics, Merit, need-based aid, etc.).

About 51% of cadets received need-based financial aid.

About 29% of cadets received ROTC Scholarships.

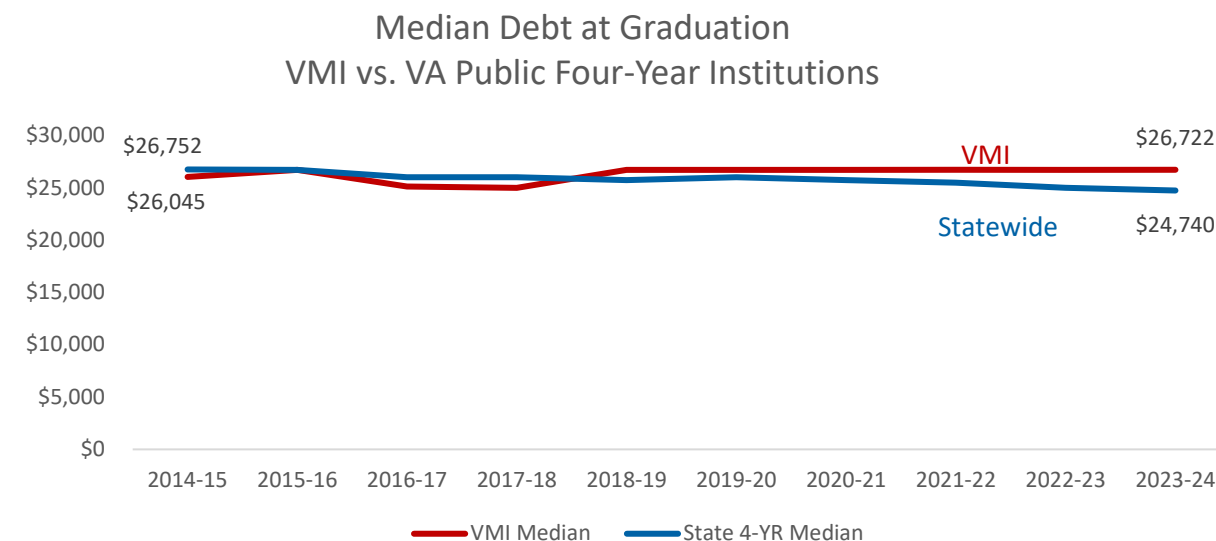
VMI strives to provide financial assistance to meet 100% of federally (FAFSA) determined need for Virginia cadets (including loans) and 60% of determined need for non-Virginia cadets (including loans).

Annually, VMI provides from its own resources, primarily from the Alumni Agencies, over 17.09 million dollars in cadet scholarship assistance, broken down as follows:

Need-based	\$8.47 million
Athletics	\$5.86 million
Non-need-based to include merit	\$2.74 million



# Financial Aid



Known Debt at Graduation of VMI Borrowers						
Year	# Borrowers	% of grads	25th Percentile	75th Percentile	VMI Median	VA Median
2014-15	228	58%	\$14,877	\$29,756	\$26,045	\$26,752
2015-16	224	59%	\$19,300	\$30,610	\$26,718	\$26,718
2016-17	236	60%	\$14,840	\$29,720	\$25,120	\$26,000
2017-18	286	64%	\$14,599	\$28,695	\$24,994	\$26,000
2018-19	209	58%	\$18,308	\$33,297	\$26,720	\$25,732
2019-20	223	58%	\$15,247	\$32,722	\$26,718	\$26,000
2020-21	271	66%	\$16,328	\$36,466	\$26,720	\$25,732
2021-22	230	58%	\$17,418	\$46,726	\$26,722	\$25,500
2022-23	197	55%	\$16,081	\$33,719	\$26,720	\$25,000
2023-24	231	57%	\$19,300	\$52,943	\$26,722	\$24,740

Source: SCHEV EOM06

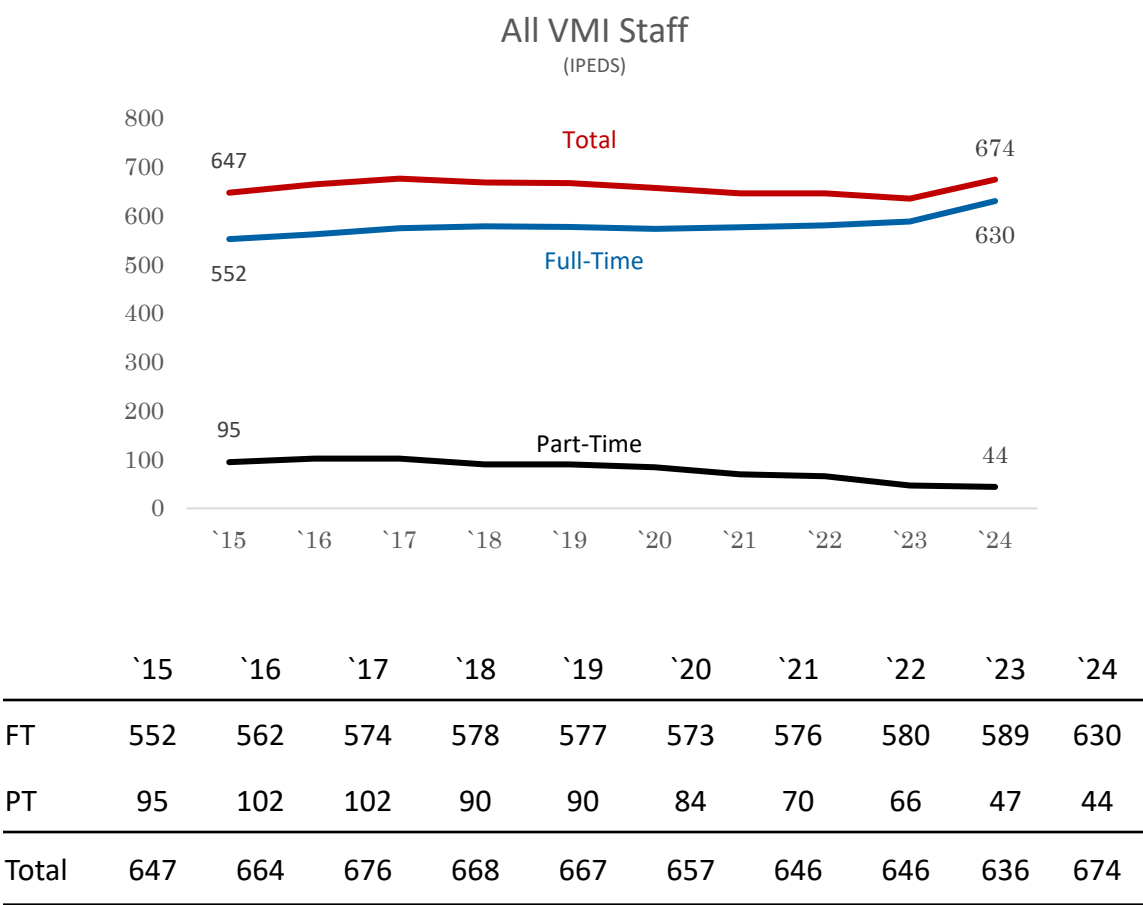




# VMI EMPLOYEES



# VMI Employees



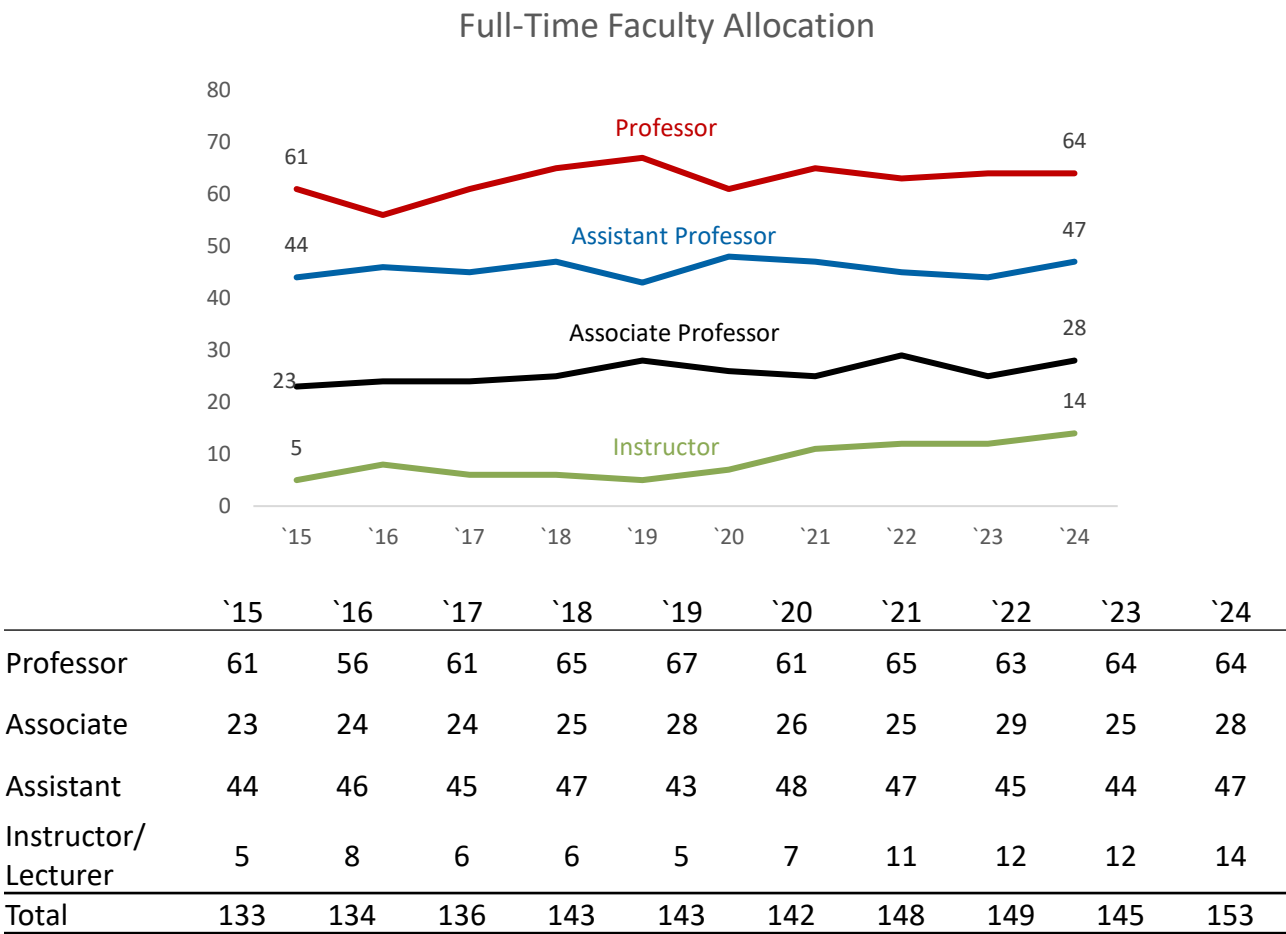
Note:

1. Data Source: IPEDS Human Resources (HR) Survey.
2. The Employee section will be updated in April upon completion of the IPEDS HR Survey data collection.
3. There was an increase in retirements among full-time and part-time teaching faculty in 2023.





# VMI Full-Time Instructional Faculty



Notes:  
1. Data Source: IPEDS Human Resources (HR) Survey  
2. The Employee section will be updated in April upon completion of the IPEDS HR Survey data collection.  
3. There was an increase in retirements among full-time teaching faculty in 2023.



# VMI Instructional Faculty by Race and Gender

Ethnic and Race	Full-Time		Part-Time		Total
	Male	Female	Male	Female	
U.S. Nonresident	1	0	0	0	1
Hispanic/Latino	0	1	1	0	2
Asian	10	6	0	1	17
Black or African American	4	0	1	1	6
Native Hawaiian or Other Pacific Islander	1	0	0	0	1
White	85	44	22	13	164
Race and ethnicity unknown	1	0	0	0	1
Grand Total	102	51	24	15	192

Notes:

1. Data Source: IPEDS Human Resources (HR) Survey 2024–25 (data as of November 1, 2024)
2. The Employee section will be updated in April upon completion of the IPEDS HR Survey data collection.



# VMI Non-Instructional Staff by Occupational Category

Occupational Category	Full-Time	Part-Time	Total
Library and Student and Academic Affairs and Other Education Services Occupations	16	0	16
Management Occupations	75	0	75
Business and Financial Operations Occupations	36	0	36
Computer, Engineering, and Science Occupations	42	0	42
Community, Social Service, Legal, Arts, Design, Entertainment, Sports, and Media Occupations	54	3	57
Healthcare Practitioners and Technical Occupations	17	1	18
Service Occupations	65	0	65
Sales and Related Occupations	8	0	8
Office and Administrative Support Occupations	81	1	82
Natural Resources, Construction, and Maintenance Occupations	44	0	44
Production, Transportation, and Material Moving Occupation	39	0	39
Grand Total	447	5	482

Notes:

1. Data Source: IPEDS Human Resources (HR) Survey 2024–25 (data as of November 1, 2024)
2. The Employee section will be updated in April upon completion of the IPEDS HR Survey data collection.



# VMI Full-Time Non-Instructional Staff

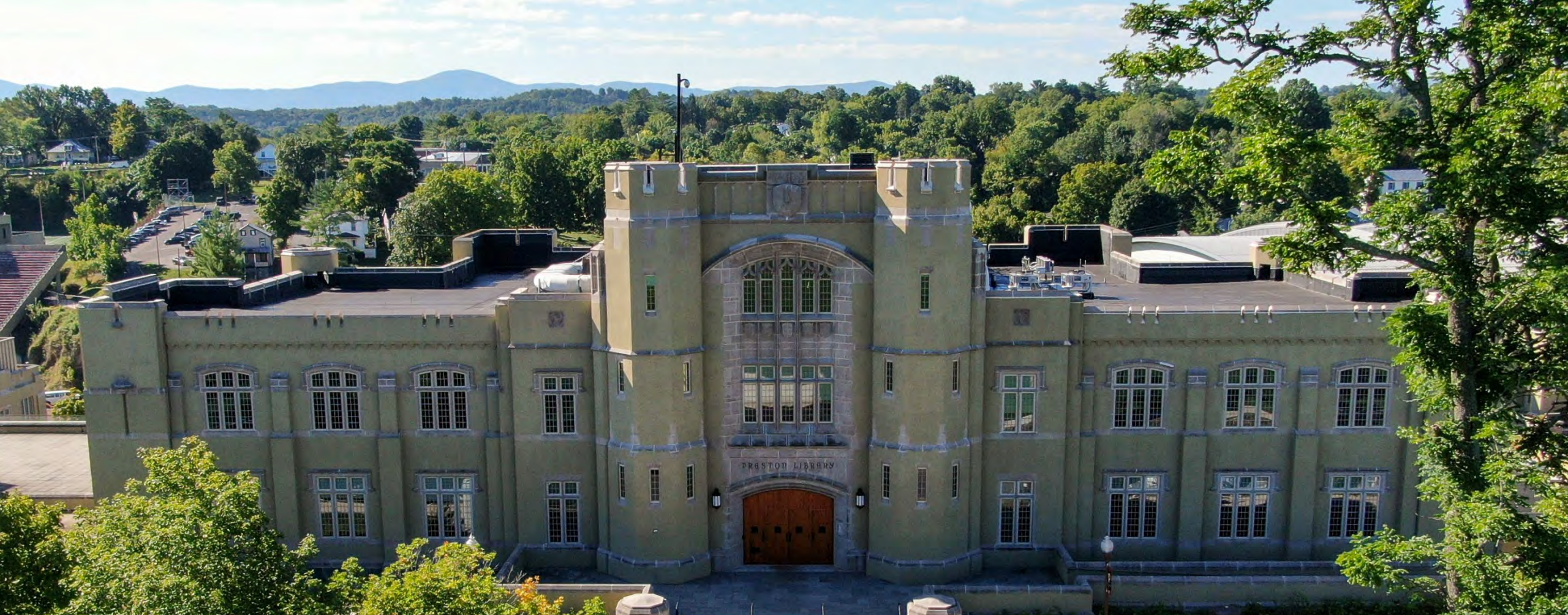
IPEDS Occupational Category	Gender	Hispanic/ Latino	Asian	Black or African American	Native Hawaiian or Other Pacific Islander	White	Total
Library and Student and Academic Affairs and Other Education Services Occupations	M					8	8
	F	1				7	8
Management Occupations	M	1	1	4		40	46
	F			3		26	29
Business and Financial Operations Occupations	M			1		11	12
	F			1		23	24
Computer, Engineering, and Science Occupations	M			3	1	29	33
	F		1			8	9
Community, Social Service, Legal, Arts, Design, Entertainment, Sports, and Media Occupations	M			8		33	41
	F		1	3		9	13
Healthcare Practitioners and Technical Occupations	M		1			3	4
	F					13	13
Service Occupations	M	1		2		39	42
	F	2		2		19	23
Sales and Related Occupations	M	1		1		4	6
	F					2	2
Office and Administrative Support Occupations	M	1				10	11
	F		1	1		68	70
Natural Resources, Construction, and Maintenance Occupations	M			2		39	41
	F					3	3
Production, Transportation, and Material Moving Occupation	M					8	8
	F	1	1			29	31
Grand Total		8	6	31	1	431	477

Notes:

1. Data Source: IPEDS Human Resources (HR) Survey 2024–25 (data as of November 1, 2024)
2. The Employee section will be updated in April upon completion of the IPEDS HR Survey data collection.





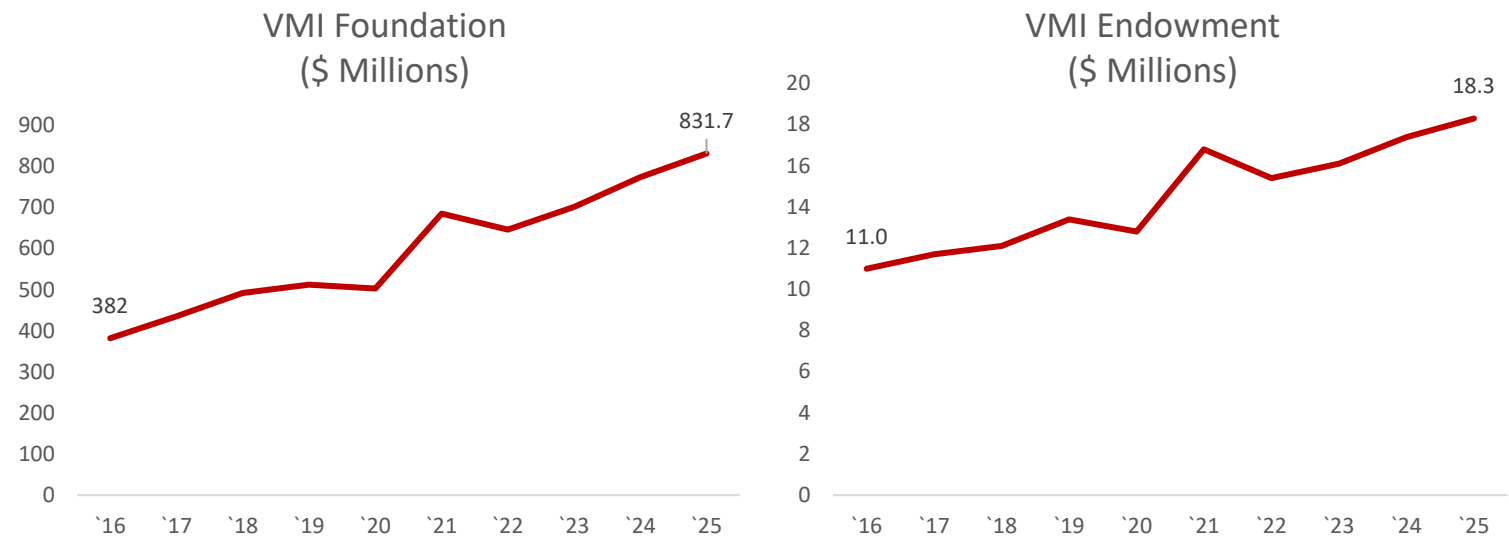


# ENDOWMENT





# Endowment



(\$ Millions*)	2016	2017	2018	2019	2020	2021	2022	2023	2024	2025
VMI Foundation	382	435.2	491.8	512.2	503.2	685.5	646.1	702.1	774.2	831.7
VMI Endowment	11.0	11.7	12.1	13.4	12.8	16.8	15.4	16.1	17.4	18.3

Notes:  
1. \*Dollar amounts are as of July each year.  
2. The Foundation endowment includes the VMI endowment and the Marshall Foundation endowment.

